

ADOBE® DREAMWEAVER® CS3

DESIGN, DEVELOP, AND MAINTAIN STANDARDS-BASED WEBSITES AND APPLICATIONS



Adobe Dreamweaver CS3 is also available as a component of:

- Adobe Creative Suite 3 Web Premium
- Adobe Creative Suite 3 Web Standard
- Adobe Creative Suite 3 Design Premium
- Adobe Creative Suite Master Collection

Dreamweaver includes the industry's first integrated evaluation tool for Section 508 and WCAG Priority 2 checkpoints and supports the latest accessibility governances. The next-generation protocol IPv6 is also supported by Dreamweaver CS3.

Dreamweaver CS3 enables you to design, develop, and maintain websites faster and more easily than ever before. Whether creating visually or coding directly, intelligent integration with related Adobe Creative Suite® 3 software means unprecedented efficiency.

Introduction

Enhance your creativity and accelerate your workflow with Adobe Dreamweaver CS3 software. Go from start to finish with an intuitive visual layout interface, streamlined coding environment, and advanced integration with Adobe Photoshop® CS3, Adobe Fireworks® CS3, Adobe Flash® CS3 Professional, and Adobe Contribute® CS3 software.

Dreamweaver CS3 is an integral part of Adobe Creative Suite 3 Web Premium, Web Standard, and Design Premium software. The Creative Suite 3 family of software empowers creative professionals and developers to experience an uninterrupted flow of energy and ideas from initial concept to polished final execution across print, video, web, and mobile devices. The end-to-end integration is the core of what makes Creative Suite uniquely powerful—creative professionals and developers remain focused on their vision and achieve the highest quality results in less time.

With Adobe Dreamweaver CS3, you can:

Create rich web content—A higher standard in web design and development is emerging, powered by Dreamweaver CS3. Create richer, more dynamic interfaces that seamlessly weave static structures together with responsive interactivity. Use the new Spry framework for Ajax to develop energetic web experiences that will leave your competition standing still.

Discover true efficiency—Accelerate every aspect of your workflow with Dreamweaver CS3. Drop in Flash video, add a Photoshop image, and take control of your CSS, all before you finish your first cup of coffee. Create visually or code directly, work on Mac or Microsoft® Windows®, and enjoy all the benefits of integration with your other favorite Adobe tools.

Apply best practices—Even the greatest imagination must have methods. Dreamweaver CS3 makes it easy to apply best practices and accepted standards to ensure your websites and applications play well with others. Effortlessly include CSS from the ground up with new CSS layouts, the unified CSS panel, and CSS visualization tools. Use the new Browser Compatibility Check feature and the comprehensive Adobe CSS Advisor website to not only find, but solve problems. Instantly preview your content for mobile devices with Adobe Device Central.

Top ten features:

- Spry framework for Ajax (Page 2)
- Spry widgets (Page 2)
- Spry effects (Page 2)
- Advanced Photoshop CS3 integration (Page 3)
- Browser compatibility check (Page 3)
- CSS Advisor (Page 4)
- CSS starter layouts (Page 4)
- Manage CSS (Page 5)
- Adobe Device Center (Page 5)
- Adobe Bridge CS3 (Page 5)

Top new features of Adobe Dreamweaver CS3

The new features in Dreamweaver CS3 allow you to create engaging, interactive web sites across any operating system, browser, or platform without getting caught up in the complexities of the code. Numerous enhancements throughout the application make Dreamweaver easier to use and allow you to develop content faster than ever before. The following is a detailed overview of the top new features in Adobe Dreamweaver CS3.

Spry framework for Ajax

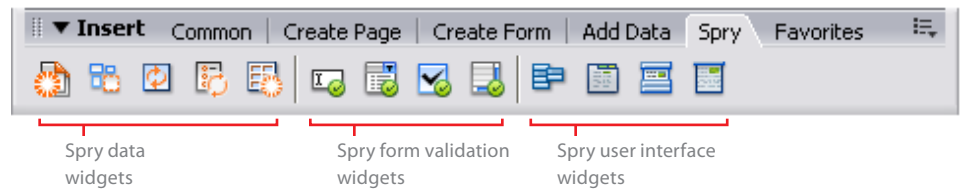
Ajax, shorthand for Asynchronous JavaScript and XML, is a development technique for creating interactive web applications. Ajax makes web pages feel more responsive, because the entire web page does not have to reload each time the user interacts with it. The result is an increase in the web page’s interactivity, speed, and usability.

With Dreamweaver CS3, you can visually design, develop, and deploy dynamic user interfaces using the Spry framework for Ajax. The Spry framework for Ajax is a JavaScript library for web designers that allows designers to build pages that provide a richer experience for their users. Unlike other Ajax frameworks, Spry is accessible to both designers and developers alike, as 99% of it is actually HTML. That means just about anyone can build pages that provide a richer experience for their audience without complicated coding.

Spry widgets

With Dreamweaver CS3, you can add common user interface components to web pages using Spry widgets. Spry widgets are pre-built components for creating common user interface elements that you can customize using CSS, and then add to your web pages. They include XML-driven lists and tables, accordions, tabbed interfaces, and form elements with validation. Until now, these objects have been difficult to build and required advanced coding skills. Spry widgets make it easier to build out and incorporate advanced interface elements into web pages, and are very flexible; new users will appreciate their simplicity, and seasoned coders will appreciate the level of customizability they offer.

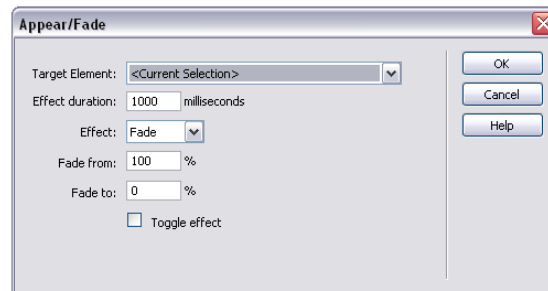
Use the Insert bar to quickly add Spry widgets to your page.



Spry effects

Easily add visual transitions to page elements with Spry effects. Effects are a simple, elegant way of enhancing the look and feel of your website. You can apply effects to almost any element on an HTML page. Effects don’t require any server-side logic or scripting to work, so when a person viewing your web page browses an HTML page and triggers an effect, only the object to which the effect is applied gets updated; the entire page doesn’t need to refresh.

With Spry effects you can make elements to make them grow, shrink, fade, highlight, and more. For example, an effect might highlight information, create animated transitions, or visually alter a page element for a certain period of time.



Spry effects enable you to easily apply cool transitions and animations—without the need for any coding on your part. It’s just as easy as adding a drop shadow effect in Photoshop.

“Creating CSS-based websites with extended functionality and cross-browser support seemed to consume more hours in my day than there are in a week, but now with Dreamweaver CS3, I can quickly and effortlessly build highly functional and effective websites in no time at all.”

Jason Brightman, Web Director
Harris Publications

Advanced Photoshop CS3 integration

As an integral part of Adobe Creative Suite 3 software, Dreamweaver CS3 features enhanced integration with Photoshop CS3 and Fireworks CS3. Designers and developers are now free to use the applications they feel most comfortable with, and still be able to work within the powerful design and development environment of Dreamweaver without sacrifice.

Adobe travels the world visiting users, gathering useful suggestions, and making note of how both designers and developers use software to get their work done. Adobe came to realize that many were struggling with the difficulty in moving content from full-page design mock-ups in Photoshop into Dreamweaver. With Dreamweaver CS3, copying and pasting content from Photoshop just got a whole lot easier—and far more powerful than ever before.

Now, designers can simply select any portion of a design in Photoshop—even across multiple layers—and paste it directly into a Dreamweaver page. Dreamweaver will present a dialog box where you can specify optimization options for the image. No further work is necessary. The best part? Should you ever need to edit the image, simply double-click on the image, and the original layered PSD file opens in Photoshop for editing.

Browser Compatibility Check

If you’ve ever added the line “This site best viewed in...” to your site, you know how difficult it can be to ensure a consistent experience across multiple browsers on a variety of operating systems. Besides the extra time it takes to test your code on multiple platforms, keeping up with the latest versions of browsers and their capabilities can be a frustrating experience.

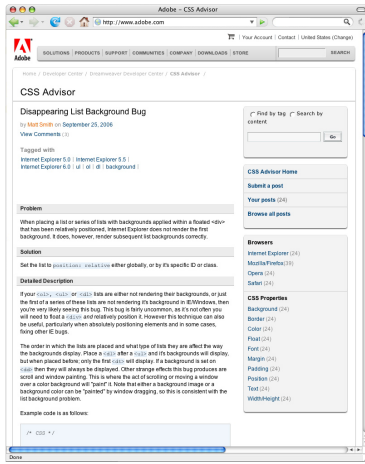
The new Browser Compatibility Check feature in Dreamweaver CS3—which generates reports that identify CSS-related issues in a variety of browsers—can handle all of the browser-related details, allowing you to focus on creating great-looking sites. To reduce browser errors, Dreamweaver CS3 provides a page report that flags browser compatibility issues. In code view, issues are flagged with green underlining, so you know exactly where the problem is. Once the problem has been identified, you can quickly fix it.

Dreamweaver CS3 highlights problems directly in the code with a green underline.

The screenshot shows the Dreamweaver CS3 interface in Code view. The main window displays HTML code for 'default.html'. Several lines of code are underlined in green, indicating browser compatibility issues. The code includes a <div id="main">, an , a <div id="leftcontainer">, a <div id="floatleft1">, a
, a <div id="floatleft2">, a , and a Developers. The Properties panel at the bottom is open to the 'Browser Compatibility Check' tab. It shows a list of results with line numbers and issue descriptions. The 'Expanding Box Problem' is highlighted, with a detailed description: 'Any content that does not fit in a fixed-width or -height box causes the box to expand to fit the content rather than letting the content overflow. Affects: Internet Explorer 6.0 Likelihood: Likely'. A link to 'View solutions to the Expanding Box Problem on Adobe.com.' is visible. A red arrow points from the text 'A link to Adobe CSS Advisor helps you find the latest information to solve issues quickly.' to the link in the panel. Another red arrow points from the text 'Browser Compatibility Check provides a list, along with the line number showing where the problem occurs in the code.' to the list of results.

Browser Compatibility Check provides a list, along with the line number showing where the problem occurs in the code.

A link to Adobe CSS Advisor helps you find the latest information to solve issues quickly.



The Adobe CSS Advisor community website invites you to share your real-world knowledge and expertise with the CSS and web-development community.

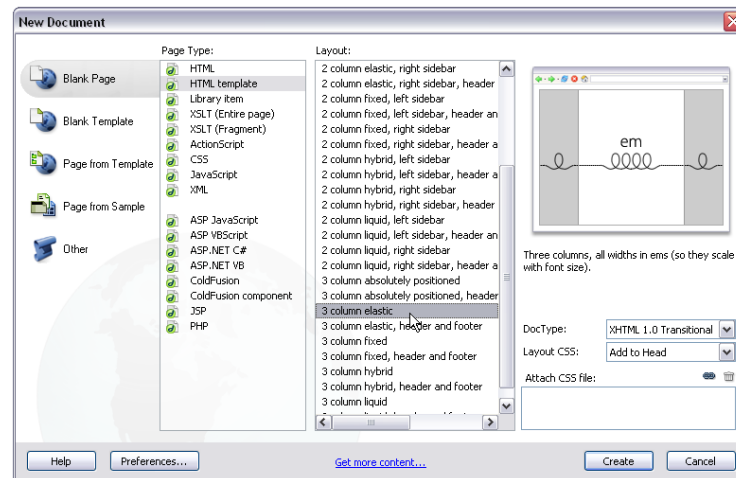
Adobe CSS Advisor

Because technology changes so quickly, browser issues and possible code fixes have to be updated on a constant basis. That's why Dreamweaver provides links to the new Adobe CSS Advisor website when offering solutions and tips for problems found during the Browser Compatibility Check process. Adobe CSS Advisor contains information on the latest issues, offers helpful tips and suggestions, and is maintained by and for the user community. Users can add their own CSS issues, make comments and rate entries. More than a forum, a wiki, or a discussion group, CSS Advisor makes it easy for you to comment with suggestions, and improvements to existing content, or to add new issues for the benefit of the entire community.

CSS layouts

Today, more designers and developers than ever are adopting web standards to deliver their content. One example is the migration from table-based layouts to cascading style sheets (CSS). And while the benefits of embracing web standards such as CSS include a more flexible and robust cross-browser site design, many people don't have the time to learn brand new ways to get their work done.

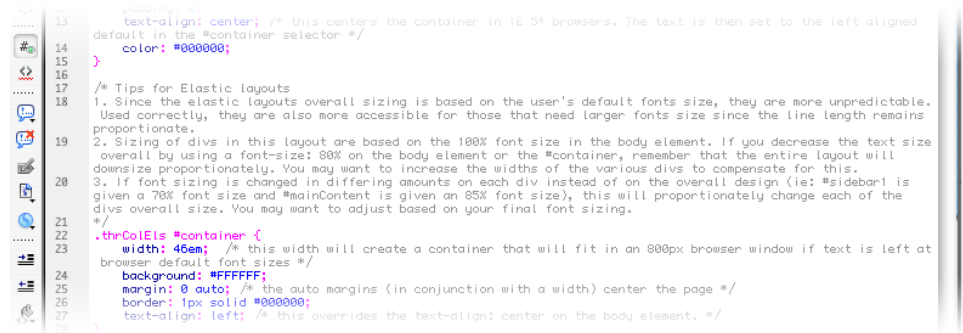
Dreamweaver CS3 helps by offering CSS layouts that not only get your page up and running quickly, they also help you learn by providing extensive inline comments in the code. Most site designs on the web can be categorized as one-, two-, or three-column layouts, each with a number of additional elements (such as sidebars, headers, etc.). Dreamweaver offers a comprehensive list of essential layout designs, which enable you to start using CSS with the click of the mouse.



CSS layouts offer a powerful way to build a site based on open web standards. Better yet, they offer an intuitive way to learn CSS.

Once you've chosen a starter layout, you can customize it to fit your needs. The unified CSS panel provides a powerful and easy way to understand the cascade of styles applied to content as well as quick access to making changes without having to navigate a lot of code through trial and error.

Extensive comments in each file aid in understanding the CSS layout. Helpful advice makes it easy to customize the layout to your specific needs.



Manage CSS

Not everyone can create the right CSS rules, in the right place, on the first try. To get things right, it's often necessary to move, rename, or otherwise change the structure of your CSS. Additionally, many people like to introduce CSS changes incrementally to a site, first by getting the CSS working on a single page, and then working on the entire site. Others prefer to step back further and get the CSS working on a single element before trying to make it work for a whole page. The Manage CSS feature makes it easier for you to move CSS rules from document to document, from the head of a document to an external sheet, between external CSS files, and more. You can also convert inline CSS to CSS rules, and place them where you need them—just by dragging and dropping.

Adobe Device Central

Integrated with Dreamweaver CS3 as well as throughout the family of Creative Suite 3 software, Adobe Device Central simplifies the creation of mobile content with built-in mobile device skins and regularly updated device profiles. Besides the ability to quickly access essential technical specifications for each device, Adobe Device Central displays HTML content and allows you to scroll using the buttons on the device. The Small Screen Rendering (SSR) mode will shrink the text and images to show accurate rendering as it would appear on the device. Now you can easily design, preview, and test engaging mobile content and rich user interfaces.

Adobe Bridge CS3

Use Dreamweaver CS3 with Adobe Bridge CS3 for easy and consistent management of images and assets. Adobe Bridge provides centralized access to your project files, applications, and settings, along with XMP metadata tagging and searching capabilities. With file organization and sharing, plus Adobe Stock Photos, at your fingertips all the time, Adobe Bridge provides a more efficient creative workflow and keeps you on top of your print, web, video, and mobile projects.

Adobe Bridge CS3 also introduces Bridge Home, a destination for up-to-date information about all your Creative Suite 3 software. Visit Bridge Home to watch the latest video tutorials on Dreamweaver, Photoshop, Flash, and others; listen to a podcast with a leading designer; or learn about upcoming training events in your community. Discover the tips and resources that will help you work faster and smarter, making the most of your Adobe products.

Availability and pricing

In the United States and Canada, Adobe Dreamweaver CS3 for Mac OS X version 10.4.8 on Intel®-based or PowerPC®-based systems and for Windows XP and Windows Vista™ is expected to ship in the second quarter of 2007. Adobe Dreamweaver CS3 will be available in North America starting in Q2 2007 for an estimated street price of US\$399, directly from Adobe or through Adobe Authorized Resellers. To order directly from Adobe, visit the Adobe Store at www.adobe.com, or call 1-888-724-4507. Licensed owners of Dreamweaver 8, Dreamweaver MX 2004, or Dreamweaver MX can upgrade to Adobe Dreamweaver CS3 for US\$199. Licensed owners of Dreamweaver 8, Dreamweaver MX 2004, or Dreamweaver MX are also eligible for special upgrade pricing to certain editions of Adobe Creative Suite 3. A complete description of upgrade eligibility and pricing is available in the Pricing Overview document. Estimated street prices do not include taxes, shipping, handling, or other related expenses. Information on pricing and support policies outside of North America and for Education customers will be available separately. Different pricing may apply for Education customers and in other geographical regions.

About Adobe Systems Incorporated

Adobe revolutionizes how the world engages with ideas and information—anytime, anywhere and through any medium. For more information, visit www.adobe.com.

For more information about Adobe Creative Suite 3 software, see:

- Adobe Creative Suite 3 Web Premium What's New
- Adobe Creative Suite 3 Design Premium What's New

Better by Adobe.™



Adobe

Adobe Systems Incorporated
345 Park Avenue
San Jose, CA 95110-2704
USA
www.adobe.com

Adobe, the Adobe logo, Contribute, Creative Suite, Dreamweaver, Fireworks, Flash, Photoshop, and "Better by Adobe" are either registered trademarks or trademarks of Adobe Systems Incorporated in the United States and/or other countries. Mac, Mac OS, and Macintosh are trademarks of Apple Computer, Inc., registered in the United States and other countries. QuickTime is a trademark and is used under license. Intel is a trademark or registered trademark of Intel Corporation or its subsidiaries in the United States and other countries. PowerPC is a trademark of International Business Machines Corporation in the United States, other countries, or both. Microsoft and Windows are either registered trademarks or trademarks of Microsoft Corporation in the United States and/or other countries. All other trademarks are the property of their respective owners. © 2007 Adobe Systems Incorporated. All rights reserved. Printed in the USA. 01/04/07