

# ADOBE® CREATIVE SUITE® 3 WEB PREMIUM

## REDEFINE THE EXTRAORDINARY IN WEB DESIGN AND DEVELOPMENT



**Adobe Creative Suite 3  
Web Premium combines  
full new versions of:**

- Adobe Dreamweaver® CS3
- Adobe Flash® CS3 Professional
- Adobe Fireworks® CS3
- Adobe Photoshop® CS3 Extended
- Adobe Illustrator® CS3
- Adobe Contribute® CS3
- Adobe Acrobat® 8 Professional
- Adobe Device Central, Adobe Bridge CS3,  
Adobe Stock Photos, and Adobe Version  
Cue® CS3

Get all of your industry favorites in one comprehensive, integrated package with Adobe Creative Suite 3 Web Premium software for Mac and Windows.

### Introduction

Adobe Creative Suite 3 Web Premium covers the spectrum of web development and digital interactive design, marrying new versions of industry favorites Adobe Photoshop CS3 Extended, Adobe Illustrator CS3, and Adobe Acrobat 8 Professional with brand new releases of Adobe Dreamweaver CS3, Adobe Flash CS3 Professional, Adobe Fireworks CS3, and Adobe Contribute CS3 software. Web designers and developers can now use the most comprehensive tools available to prototype, design, develop, and maintain websites, applications, and mobile content. Web Premium makes it possible for you to deliver online, interactive, and mobile projects today while preparing for the evolution of tomorrow.

For those who require only the most essential web tools, Adobe also offers Adobe Creative Suite 3 Web Standard. This new suite helps you get all of your tasks done quickly and efficiently with the primary tools for web and interactive design and development. Web Standard provides integrated workflows across Dreamweaver CS3, Flash CS3, Fireworks CS3, and Contribute CS3 so that you can prototype, design, develop, and maintain websites, applications, and mobile content while easily supporting industry standards, technologies, and best practices.

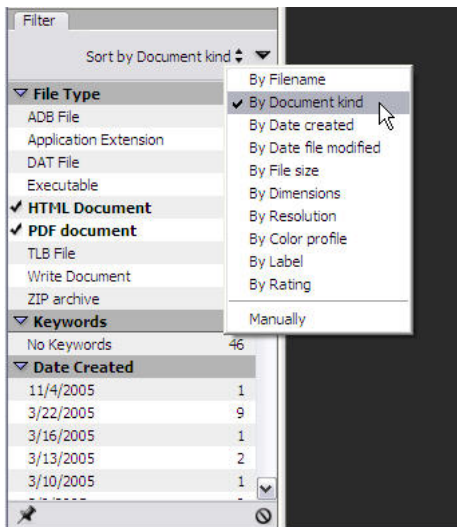
Adobe Creative Suite 3 Web Premium offers:

**Essential tools**—Creative Suite 3 Web Premium includes full new releases of the industry's best tools for graphics creation, rich media authoring, web design, and web development. Each component has new and enhanced features and a more integrated workflow designed specifically to meet and exceed the needs of designers and developers in today's fast-changing webscape. Furthermore, each component fully supports the latest versions of Mac and Microsoft® Windows® operating systems. Now you can prototype, design, develop, and maintain web and interactive experiences in one integrated suite.

**Intelligent integration**—Experience the incredible efficiency of advanced integration between components in Creative Suite 3 Web Premium. Web design and development are easier and more productive with shared tools and an improved design environment that includes common commands, tools, keyboard shortcuts, control elements, and workspace

## Top ten benefits

- Creative breakthroughs through powerful integration (Page 2)
- Innovative support for a fast-changing webscape with Dreamweaver CS3 (Page 2)
- Enhanced interactive design with new Flash CS3 Professional (Page 4)
- Rapid prototyping with new Fireworks CS3 (Page 5)
- Powerful new Photoshop CS3 Extended (Page 7)
- Fresh inspiration with new Illustrator CS3 (Page 8)
- Web maintenance made easy with Contribute CS3 (Page 10)
- Cross-browser complexities resolved (Page 11)
- Mobile authoring with Device Central (Page 11)
- New cross-platform support for Mac and Windows (Page 12)



Use the new Filter panel in Adobe Bridge to find just the image you need for your web page.

panels that dock and group. Enjoy many more examples of intelligent integration as you produce your best work with Creative Suite 3 Web Premium.

**Agile workflows**—Go with your flow. Create dazzling websites, applications, interactive experiences, and mobile content with a shared cross-platform user interface. Whether you're working on Mac or Windows, your workflow is optimized and your productivity boosted as you work with features such as new rapid prototyping in Fireworks, improved CSS workflow in Dreamweaver, new ActionScript™ 3.0 in Flash, the new Live Color feature in Illustrator, new nondestructive Smart Filters in Photoshop, WYSIWYG authoring in Contribute, PDF packaging for multiple files in Acrobat, and much more. Now you can move from concept to delivery in one fluid, intuitive environment.

## Top new benefits of Adobe Creative Suite 3 Web Premium

Power up your work environment with all the essential prototyping, design, development, and maintenance tools in Adobe Creative Suite 3 Web Premium software. With new features and common shortcuts, now you can now bypass the trivial and focus on what's important.

### Creative breakthroughs through powerful integration

Time is on your side as you fluidly move assets from one component to another through advanced suite integration. For example, you can now preserve layer effects between Photoshop and Fireworks for fast, efficient prototyping. Enjoy high-fidelity import of Photoshop and Illustrator files into Flash to transform static graphics into lively animations.

In Dreamweaver, you can copy and paste images from Photoshop or drag and drop Flash video assets directly into Dreamweaver files. Emulate and test Flash Lite™ mobile content with Adobe Device Central. Organize all of your files, folders, and images using the new version of Adobe Bridge software that features an improved layout, a new Filters panel that helps you locate images more quickly and easily, and the new Stacks feature that gives you the ability to compress a series of images to a single thumbnail.

### Innovative support for a fast-changing webscape with Dreamweaver CS3

Dreamweaver CS3 makes it easier and more efficient to design, develop, and maintain websites and applications without getting caught up in the complexities of the code. Go from start to finish with Dreamweaver CS3 software's intuitive visual layout interface, streamlined coding environment, and advanced integration with Adobe Photoshop CS3, Fireworks CS3, Flash CS3 Professional, Contribute CS3, and Adobe Bridge CS3.

Create dynamic user interfaces with rich visual transitions using the pre-built widgets and effects from the Spry framework for Ajax in Dreamweaver CS3—all while complying with industry standards and best practices.

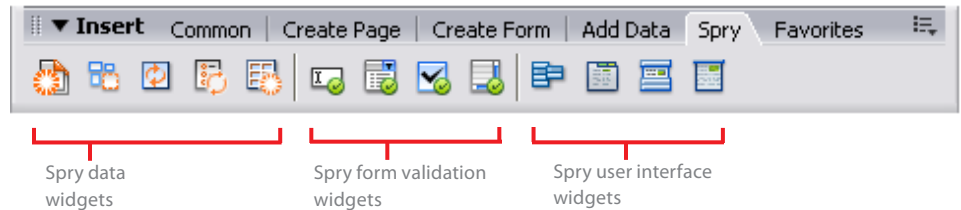
Verify that your cutting-edge sites work across browsers and operating systems with Browser Compatibility Check. Consult the Adobe CSS Advisor community website to understand and fix browser compatibility issues. Get started quickly on your website with CSS-based web design and CSS layouts.

### Create and deploy dynamic websites with Spry framework for Ajax

Visually design, develop, and deploy dynamic user interfaces using the Spry framework for Ajax (short for Asynchronous JavaScript and XML). Spry for Ajax is a development technique for creating interactive web applications. Ajax makes web pages feel more responsive because the entire page does not have to be reloaded each time the user interacts with it. This increases the web page's interactivity, speed, and usability. And while other frameworks are aimed at those who write Javascript code, Spry is designed for web designers who are most comfortable with HTML.

**Spry widgets**—Spry widgets are pre-built components for building common user interface elements that you can customize using CSS and then add to web pages. These components include XML-driven lists and tables, accordions, tabbed interfaces, and form elements with validation. Spry widgets make it easier to build out and incorporate advanced interface elements into web pages.

Use the Insert bar to quickly add Spry widgets to your page.



**Spry effects**—Use Spry effects to easily add visual transitions and animations to web-page elements. Make your effects enlarge, shrink, fade, highlight, and more, as a simple, elegant way of enhancing the look and feel of your website. You can apply effects to almost any element on an HTML page.

### Enhanced Dreamweaver CSS support and new tools

Get started with web design in a snap. Beautiful new CSS layouts allow users to quickly and efficiently go from installation to building out a full site. Start with a basic cross-browser compatible layout, and then modify it to meet your specific needs. Extensive comments in each file make it easy to understand the CSS layout.

The following new features in Dreamweaver CS3 help you maintain consistency and make it easier to manage your site's look and styles:

**Browser Compatibility Check**—Ensures that your website's experience is consistent across operating systems, browsers, and platforms. Browser Compatibility Check identifies and gives you a report on CSS rendering inconsistencies across a variety of browsers and provides you with the solutions for fixing any issues.

**Adobe CSS Advisor website**—Get coaching to resolve browser-specific CSS issues with the new Adobe CSS Advisor website—a great source of user-contributed solutions.

**CSS layouts**—Build your page quickly with the comprehensive set of Dreamweaver CSS layout designs and the extensive inline comments in the code. Just select a starter layout and customize it to fit your needs. The unified CSS panel provides a powerful and easy way to understand styles applied to content, and allows you to quickly make changes without the need to navigate a lot of code.

### Tight Dreamweaver integration with Web Premium components

Dreamweaver CS3 is tightly integrated with other Web Premium components, including Adobe Photoshop CS3, Illustrator CS3, Fireworks CS3, Flash CS3 Professional, Contribute CS3, and Bridge CS3.

**Dreamweaver cut and paste from Photoshop**—Simply select any portion of a design in Photoshop CS3 Extended (even across multiple layers) and paste it directly into a page in Dreamweaver. You can specify optimization options for the image. To edit the image, double-click it, and the original layered PSD file opens in Photoshop.

**Dreamweaver integration with Fireworks for rapid prototyping**—Mock up designs in Fireworks CS3, and then move these designs into Dreamweaver to build out your website.

**Contribute CS3 template integration**—Seamless integration between Dreamweaver and Contribute CS3 templates ensures that look-and-feel is never compromised.

**Dreamweaver integration with Adobe Bridge**—Use Dreamweaver CS3 with Adobe Bridge CS3 for easy and consistent management of images and assets. With file organization

and sharing, plus Adobe Stock Photos, at your fingertips all the time, Adobe Bridge provides a more efficient creative workflow and keeps you on top of your print, web, video, and mobile projects.

### Dreamweaver support for government, accessibility, and Internet standards

Dreamweaver includes the industry's first integrated evaluation tool for Section 508 and WCAG Priority 2 checkpoints, and supports the latest accessibility governances. The next-generation protocol IPv6 is also supported by Dreamweaver CS3.

### Enhanced interactive design with new Flash CS3 Professional

Flash CS3 Professional is the most advanced authoring environment for creating interactive content in a fast, fluid, and efficient workflow. Now deeply integrated with Photoshop and Illustrator, Flash CS3 enables you to work seamlessly with Adobe's most popular creative software to design and deliver engaging interactive websites, applications, and mobile content.

Experience greater creative control with sophisticated new video tools and new Flash CS3 drawing tools, such as Shape Primitives and the new Pen tool (similar to the one found in Illustrator).

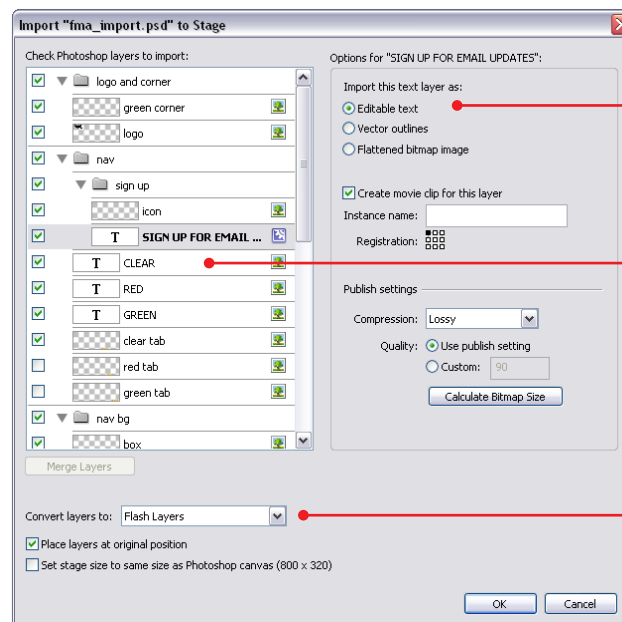
Efficient new coding features save you time and enhance the designer-developer workflow. Timeline-based animations can now be quickly converted to ActionScript 3.0, which allows you to animate visually, and then translate motion into reusable, easily editable code that you can debug with the new ActionScript debugger.

Sophisticated video encoding and advanced QuickTime export provide you with greater control over the appearance of your video, ensuring a quality lean-forward experience for your audience.

### Powerful New Flash integration with Photoshop CS3 and Illustrator CS3

Flash CS3 shares a streamlined workflow with Photoshop and Illustrator. You can use the software that you are most familiar with while also working within the powerful design and development environment of Flash.

For example, if you import a PSD file into Flash, a dialog box displays the entire Photoshop layer hierarchy. You can then choose the layers to import, and select and apply a variety of settings to each individual layer.



For each individual layer in the Photoshop file, choose how Flash should preserve the information.

View the entire hierarchy of the Photoshop file, and choose which layers to import and which ones to ignore.

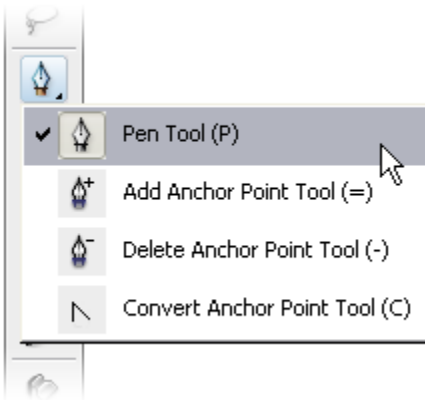
Convert Photoshop layers to either Flash layers or Flash keyframes.

When you import a native Illustrator file into Flash, a similar dialog box displays a list of all layers, sublayers, groups, and objects. You can select which objects to import, and then adjust the settings to specify exactly how each object is brought into your project—with a much higher level of object fidelity than previous versions. You can import Illustrator layers as separate Flash layers, keyframes, or as a single Flash layer.

If you want to quickly import content, the new Paste dialog box in Flash makes it possible to preserve functionality and structure when copying and pasting from Illustrator. The new Import dialog box allows you to specify how Illustrator art is pasted into your Flash files. Illustrator paths remain intact, with the same anchor-point positions, gradients, clipping masks, and symbols.

### Convert animation to ActionScript 3.0

Creating motion as an attribute of ActionScript 3.0 gives you flexibility and possibilities. In Flash CS3, you can instantly convert timeline-based animations to ActionScript 3.0. This allows you to visually animate the motions, and then translate them into reusable, easily updated code—eliminating the need to manually translate the motion content. This new time-saving functionality supports position, scale, rotation, skew, color, easing, transform point, filters, and frame properties.



The new pen tools in Flash look and respond much like those found in Illustrator. They even use the same keyboard shortcuts, cursors, and modifier keys.

### New Flash drawing tools

Professional designers appreciate the power and precision of the vector drawing tools found in Adobe Illustrator. In addition to new Shape Primitives, Flash CS3 delivers precise drawing control with the new Pen tool, which looks and behaves much like the one found in Adobe Illustrator.

### Sophisticated video encoding

Flash CS3 Professional features new encoding options such as deinterlacing, advanced cue point control, and a larger selection of video component skins that provide you with more control over the appearance of your video. Redesigned for this release, the new Flash Video Encoder is a standalone video encoding tool that lets you encode video into the Flash video (FLV) format.

### Advanced QuickTime export

Flash CS3 introduces an advanced QuickTime export feature that captures exactly what the Player renders—including complex nested symbols and content generated by ActionScript. The ability to generate an alpha channel, combined with a new Publish option to ignore hidden layers upon export, allows entirely new workflows between Flash and video editing tools, such as Adobe Premiere Pro® and After Effects® software.

### Rapid prototyping with new Fireworks CS3

Fireworks CS3 is a unique hybrid vector and bitmap tool that delivers the most efficient design environment for rapidly prototyping websites and user interfaces, and creating and optimizing images for the web. This new version features a hierarchical organization structure that supports layers and sublayers, intelligent scaling, and the ability to build complex web-page prototypes and save them as a single PNG file, as well as a new Common Library of customizable graphic symbols, a new Symbol Properties panel, and much more.

As an integral part of Creative Suite 3 Web Premium, Fireworks CS3 features time-saving integration with Photoshop CS3, Illustrator CS3, Dreamweaver CS3, Flash CS3 Professional, and Adobe Flex™ 2. You can perform your design and development using your favorite software programs, and then continue your work in Fireworks to prototype websites and user interfaces, and create and optimize images for the web.

### New Fireworks hierarchical organization structure

Previous versions of Fireworks were restricted to a single level of layers when designing pages. Now you can create as many layers as you need in your Fireworks file. When creating

a new file, all items are initially organized at the same level, in a nonhierarchical manner. As you work with the file, you can create new sublayers and move items into them, or move elements from one layer to another at any time. You can also create multiple sublayers and group them. The new Fireworks hierarchical organization structure allows you to create simple or complex prototypes, web pages, applications, and mobile content.

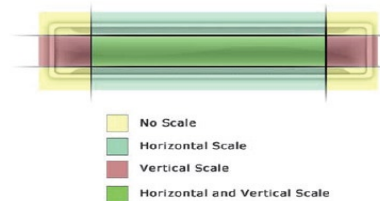
### New Fireworks CS3 multiple web pages

Fireworks CS3 makes it possible to build complex multiple-page web prototypes that are saved as a single PNG file. Each page appears as a different canvas document. The canvas size, canvas color, and image resolution can be customized separately for each page.

Taking the multiple-page concept one step further, Fireworks layers can apply to a single page, or they can be shared across multiple pages. Once shared, the layers are shaded yellow to differentiate them from unshared layers. For rapid prototyping, you can create workflows with hyperlinks and hotspot controls on multiple pages.

### Intelligent scaling with Fireworks CS3

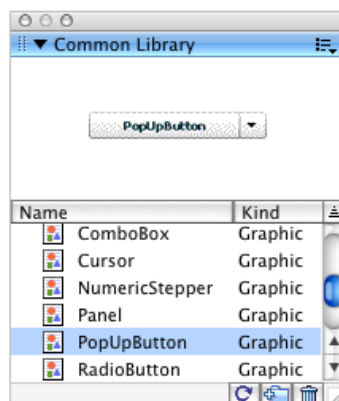
When you apply scale transformations to buttons and symbols, the entire object is usually transformed as a single unit. However, applying this type of transformation to certain types of objects (especially geometric shapes with styled corners) can result in minor distortions. Fireworks CS3 introduces a dynamic new feature called 9-slice scaling, which allows you to intelligently scale vector or bitmap button symbols and graphic symbols. By positioning a set of guides over your artwork, you can define exactly how each part of a button or symbol is scaled. Intelligent scaling makes it faster than ever before to prototype website and application elements.



Intelligent scaling ensures that your design elements are as flexible as your imagination. Up to nine different regions determine how button or graphic symbols appear when scaled, resulting in graphics that look perfect every time.

### Common Library and customizable symbols

With Fireworks CS3, you can jump-start your prototype with a common library for all assets, including rich graphic symbols. Acting as an asset repository, the Common Library can be used to leverage content across multiple documents, and can also serve as an efficient way to manage shared assets on a server so that a workgroup of designers and developers can access them. The Common Library can store three different types of assets: graphics, buttons, and animation symbols.



A predesigned library of symbols has been included with Fireworks CS3. These symbols can easily be customized or "skinned" to accommodate the look and feel of a particular user interface.

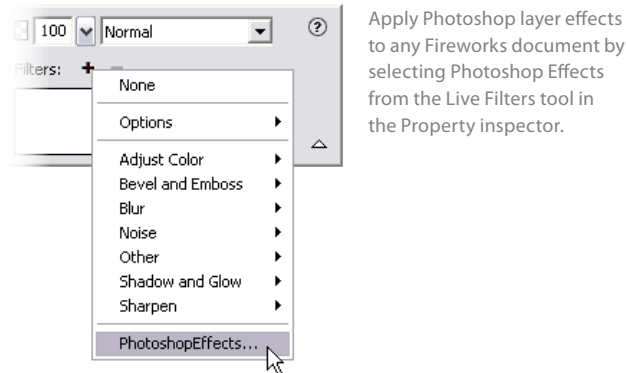
**Customizable graphic symbols**—Easily customize graphic symbol properties with the new System Properties panel. Modify line weights, colors, fonts, and other attributes that affect the aesthetics of a graphic symbol without the need to access specific layers. Changes

are made on a per-symbol basis with nondestructive soft edits, so the original symbol version remains untouched.

### Powerful integration with Photoshop CS3

You can now import native Photoshop files directly into Fireworks CS3 while retaining a whole new level of functionality and redefining the concept of what integration is and should be. Design comps and images can be saved as native Photoshop files and opened directly in Fireworks CS3. Fireworks CS3 allows you to preserve layer and sublayer information when importing Photoshop files.

When a Photoshop file with layer effects (such as shadows, glows, bevels, overlays, or strokes) is imported, Fireworks CS3 imports it in editable mode. You can also now apply Photoshop layer effects directly to any object within Fireworks.



Fireworks CS3 includes seven commonly used Photoshop blending modes—dissolve, linear burn, linear dodge, vivid light, linear light, pin light, and hard mix.

### Essential integration with Illustrator CS3

You can import native Illustrator files directly into Fireworks CS3 while retaining attributes that include layers, groups, and colors. Because this important document structure is preserved, you can easily group and scale design elements in Fireworks.

### Seamless integration with Dreamweaver CS3

With Fireworks CS3, you can copy and paste any object into Dreamweaver HTML documents. In addition, you can leverage the improved CSS export in Fireworks to easily import editable code into the Dreamweaver advanced coding environment.

### Powerful new Photoshop CS3 Extended

Be artful in your graphics creation process with streamlined workflows and new tools for specialized professional tasks found only in Photoshop CS3 Extended. New tools include nondestructive Smart Filters, 3D visualization and texture editing tools, the Quick Selection tool, the enhanced Vanishing Point feature, and advanced new drawing tools.

### Special features in Photoshop CS3 Extended

Photoshop CS3 Extended provides all of the rich features found in Photoshop CS3, with added custom features and tools designed especially for specialized professionals in fields such as motion graphics.

Comprehensive image analysis comes from new 3D and motion support that includes time-based cloning and healing on new video layers, 3D model visualization and texture editing, and native editing of Adobe Flash files.

The unrivaled editing power of Photoshop is extended with layer and paint tools in 32-bit HDF images, automatic layer alignment and blending, and multiple image processing.

## New and enhanced features for Acrobat 8 Professional

- Collaborate with new server-based shared reviews and review tracking. Work offline, and then automatically upload the document and alert other users that there's something new when you reconnect.
- Embed Flash animations in PDF files.
- Create Adobe PDF files from Office applications for Windows, from email, a website, or from any file that prints.
- Manage and share your documents with the new Combine Files feature. Assemble multiple related files into one Adobe PDF package. Maintain file integrity while allowing users to view, browse, sort, extract, and print selected documents using the Combine Files list window.
- Acrobat supports the latest standards. Create Adobe PDF files that comply with a host of industry standards, such as PDF/X-1a, PDF/X-3, PDF/X-4, PDF/A, JDF, XMP metadata, and XML.

## Nondestructive Smart Filters

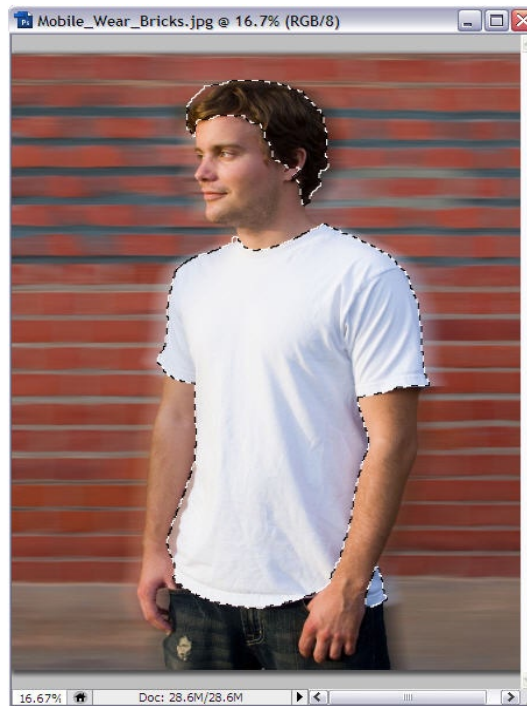
Smart Filters are simply Photoshop filters that are applied within the context of a Smart Object. They are live and re-editable, so you can freely experiment with various filter combinations and settings—without ever needing to back up and start over with the original image. And because a Smart Filter has its own layer mask, you can edit the mask to precisely adjust the filter's effects on different areas of the image.

## 3D and motion support

Photoshop CS3 Extended provides new support for visualizing your 3D models and editing their 2D textures, as well as for opening your motion graphics files and editing the still graphics frames of which they are composed. Now you can edit 3D model textures as easily as any other image. Use familiar, powerful Photoshop tools in time-based painting and when you are cloning video frames. You can easily import, work with, and export to more specialized formats than ever before, including Adobe Flash Video, MPEG-4 video, QuickTime, AVI for video, and U3D, OBJ, and 3DS for 3D models.

## Quick Selection tool

With the new Quick Selection tool, Photoshop CS3 slashes the time necessary to choose image areas. Now instead of painstakingly outlining the image that you need to work on, you can simply paint the general area with the Quick Selection tool. Photoshop CS3 tracks where you are painting, and analyzes the image to automatically complete the selection. For simple or complex image selections, the new Quick Selection tool is a real time-saver.



With the new Quick Selection tool, you simply paint the general area. Photoshop CS3 then analyzes the image and automatically completes the selection.

## Vanishing Point with multiple, adjustable angle perspective planes

Wrap graphics around multiple planes with greater flexibility and control by using the enhanced Vanishing Point feature in Photoshop CS3. You are no longer limited to adding planes at 90-degree angles. Now you can quickly and easily create multiple planes in any image, connected at any angle. Easily paste graphics in perspective to create packaging mock-ups and effortlessly edit in perspective. Vanishing Point adjusts brush strokes, healing and cloning as you paint over the planes. Photoshop CS3 Extended also gives you the ability to measure in perspective. Define a scale in Vanishing Point, and then you can measure any distance along the plane. This means that you can obtain accurate measurements even in photographs with a sharply angled point of view.

## Fresh inspiration with new Illustrator CS3

Illustrator CS3 is the essential creative tool for web-page design and sophisticated vector graphics. You can export paths, gradients, and masks cleanly to Flash CS3 Professional, or design a web page with layers and precision slicing.

The exciting new Live Color feature includes a host of new tools and allows Flash designers to quickly create amazing color-shift animation. New advanced drawing tools help you work more quickly and naturally. More effects and controls are surfaced in the enhanced Control panel, so now it's easier to find just the right tool when you need it.

Certain new features in Illustrator have been designed specifically for robust Illustrator integration with Flash CS3, including symbols in Illustrator that behave like Flash symbols when imported, the Crop Area tool, and New Document Profiles.

### Live Color

Live Color is a complete color exploration environment within Illustrator CS3. If you have ever been frustrated by having to color objects individually, you are sure to appreciate this new, interactive way to create and apply color schemes.

A host of new tools in Live Color lets you work with color in a variety of ways. Use the tools for inspiration—discover new and unique color combinations that you can save and reuse. Interactively apply color to multiple objects at once, test color schemes quickly, and recolor artwork according to specific schemes, such as PANTONE or any custom library.



Use Live Color to quickly and easily explore new color combinations in your work. In this example, the first label (left) is the original design. For the second, the artist applies the Analogous color feature to further explore the label colors in an alternate red palette. For the third and fourth label, the artist recolors the artwork while exploring new flavor labels.

### New and enhanced Illustrator CS3 drawing tools

The drawing tools in Adobe Illustrator have long been the industry standard for power and versatility, with an amazing depth of choice for path manipulation and object design. Now the best vector tool has just gotten better, with the following improvements to help you draw faster and more naturally.

- Align and distribute points just like you align and distribute objects. Select multiple anchor points and the entire range of familiar alignment buttons appears in the Control panel. You can align points to the artboard or to a crop area.
- Edit paths more easily by using tools that are now displayed in the Control panel. Delete and add points, cut and join paths, or convert anchors to smooth or corner. You can even hide and show handles with one click.

## Adobe Bridge with Stacks and Filters

With folders full of images, you will appreciate the enhancements in the next-generation Adobe Bridge CS3:

- Stacks lets you compress a series of images to a single thumbnail with a single click, and then just as easily expand the image set again.
- The new Filters panel makes it faster and easier to locate the right image.
- The new Loupe tool allows you to instantly zoom in and out of any image area that you want to inspect.
- Flat view gives you an instant look at all images in a set of nested folders.
- The new three-column layout and saved workspaces give you greater flexibility and efficiency.

Adobe Bridge CS3 also introduces Bridge Home, a destination for up-to-date information about all your Creative Suite 3 software. Visit Bridge Home to watch the latest video tutorials on Create Suite 3 Web Premium; listen to a podcast with a leading designer; or learn about upcoming training events in your community. Discover the tips and resources that will help you work faster and smarter, making the most of your Adobe products.

- Select points more easily with the Direct Selection tool by running your cursor over any anchor point. The point enlarges so that you can see and select it. Even with no objects selected, your cursor will show a larger square anywhere it detects a point.

## Expanded Illustrator Control panel

The Control panel in Illustrator CS3 puts even more tools and effects at your fingertips. The Control panel is context-sensitive, so it automatically displays the options that are most appropriate for your current selection. Now it's easier to find just the option that you need for the task at hand.

You can now access anchor-point controls, selection tools, clipping masks, envelope distortions, and more, all visible at the top of your screen. The Control panel reduces workspace clutter by eliminating the need to keep full panels open, and eases the headache of searching deep within menus for what you need.

## New Illustrator integration with Flash

The integrity of critical elements in your Illustrator artwork is now maintained in Flash, with intact paths and correct anchor point positions, as well as gradients, clipping masks, and symbols. Plus, your entire Illustrator layer and grouping structure is preserved, along with all your object names. Now you can move back and forth between software more easily and take full advantage of the strengths of Illustrator to create intricate and unique vectors for your animations.

## Web maintenance made easy with Contribute CS3

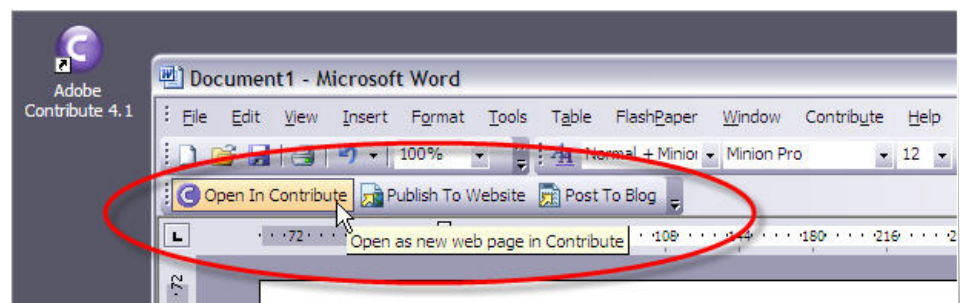
Free your staff from the routine of simple content edits, posts, and more. With Adobe Contribute CS3, you can edit, update, and publish content to multiple websites and blogs from a single, controlled, permissions-based application, and from within Microsoft Office applications. This eliminates the need to open several different applications or to toggle between different websites and blogs.

### Single tool that meets all web publishing needs

Simply browse to a website that needs updating or to a blog that is ready for a new entry. Make changes to the content and click one button to publish when finished. No technical expertise is required. WYSIWYG editing and single-click publishing make updates quick, easy, and safe. Your result is a dramatically reduced editing time.

### Website integrity maintained with Dreamweaver integration

Seamless integration between Adobe Contribute CS3 and Dreamweaver templates ensures that look-and-feel is never compromised, even when multiple authors update content across a website. Content authors can only update areas specified by the designer or webmaster, so the website always looks the way the designer intended. And like Dreamweaver, Contribute CS3 preserves code quality and formats throughout the editing process.



The new Contribute CS3 toolbar makes it simple to post content to your websites and blogs directly from Microsoft Office applications.

## Microsoft Office integration

Because many website and blog editors use Microsoft Office applications to write and edit content, Contribute installs two buttons that allow you to publish directly to a website and post to a blog without even opening Contribute.

## New Flash video support

Include Adobe Flash video (FLV) in websites and blogs by simply dragging and dropping the file onto the web page or into the blog entry during edit. Contribute automatically uploads the file and posts it to the site.

## Web administration console

Use fine-grained permissions to ensure that only authorized users can update specified website content or blog entries. Restrict the ability of specified users to publish, and assign roles to preserve content-approval workflows.

## Cross-browser complexities resolved

Why spend all that time developing your website if you can't be sure that it will run on your customer's favorite browser? Use the Browser Compatibility Check feature in Dreamweaver CS3 to flag CSS issues and identify the code. Consult Adobe CSS Advisor to determine fixes and stay abreast of changing issues and technologies.

**Browser Compatibility Check**—Run a page report using the new Browser Compatibility Check in Dreamweaver CS3 to identify CSS-related issues and where they are located in your code. Click the View solutions link on the report results page and go to the Adobe CSS Advisor website for information on known issues and possible fixes.

Dreamweaver CS3 highlights problems directly in the code with a green underline.

The screenshot shows the Dreamweaver CS3 interface. The top toolbar includes buttons for Code, Split, Design, and Check Page. The main workspace displays HTML code for 'default.html'. Lines 27, 29, and 32 are highlighted with green underlines, indicating CSS-related issues. The bottom panel shows the 'Results' tab of the 'Browser Compatibility Check' tool. It lists several issues:

Line	Issue
6	Found 3 errors in external css files
11	Expanding Box Problem
27	Expanding Box Problem
29	Doubled Float Margin Bug
47	Expanding Box Problem
67	Doubled Float Margin Bug
75	Three Pixel Text Jod

The 'Expanding Box Problem' is expanded, showing a description: 'Any content that does not fit in a fixed-width or -height box causes the box to expand to fit the content rather than letting the content overflow.' It also lists 'Affects: Internet Explorer 6.0' and 'Likelihood: Likely'. A link 'View solutions' is provided at the bottom of the expanded issue.

Browser Compatibility Check provides a list of problems found in the code and shows the line number where each one occurs.

A link to Adobe CSS Advisor helps you find the latest information to quickly resolve your issues.

The Windows version of Adobe Creative Suite 3 Web Premium requires Windows Vista or Windows XP.

The Mac version of Adobe Creative Suite 3 Web Premium requires Mac OS X running on an Intel or PowerPC processor.

**Adobe CSS Advisor**—The new Adobe CSS Advisor is a community-based website that contains information on the latest issues, offers helpful tips and suggestions, and allows you to post comments, rate entries, and share your real-world knowledge and expertise with the CSS and web development community.

### **Mobile authoring with Adobe Device Central CS3**

In Adobe Device Central, you can preview, and test content (Flash, images, video, and HTML approximation) with ease and efficiency for a wide range of mobile and consumer devices—with built-in mobile device skins and quarterly-updated device profiles. Device Central is integrated with Flash, Dreamweaver, Photoshop, Illustrator, and Adobe Bridge.

### **New cross-platform support for Mac and Windows**

Adobe Creative Suite 3 Web Premium is designed for Mac OS X systems running on Intel® and Power PC® processors, and for Windows Vista™ and Windows XP. Work on your platform of choice to deliver compelling web experiences across platforms, browsers, and operating systems.

### **Availability and pricing**

In the United States and Canada, Adobe Creative Suite 3 Web Premium for Mac OS X on Intel-based or PowerPC-based systems and for Windows XP and Windows Vista is expected to ship in the second quarter of 2007. Adobe Creative Suite 3 Web Premium will be available for an estimated street price of US\$1599, directly from Adobe or through Adobe Authorized Resellers. Customers may order directly from Adobe by visiting the Adobe Store at [www.adobe.com](http://www.adobe.com) or calling 1-888-724-4507. Licensed users of Studio 8, Studio MX2004, Studio MX, or Adobe Creative Suite 1.x or 2.x (Premium or Standard) can upgrade to Adobe Creative Suite 3 Web Premium for an estimated street price of US\$499. Licensed users of qualifying Adobe point products, such as Flash or Dreamweaver, can upgrade to Web Premium for an estimated street price of US\$1399. Estimated street prices do not include taxes, shipping, handling, or other related expenses. A complete list of products that qualify users for upgrade pricing is available in the Pricing Overview document. Information on pricing and support policies outside of North America and for Education customers will be available separately.

### **About Adobe Systems Incorporated**

Adobe revolutionizes how the world engages with ideas and information—anytime, anywhere and through any medium. For more information, visit [www.adobe.com](http://www.adobe.com).

#### **For more information about Web Premium, see:**

- Adobe Dreamweaver CS3 What's New
- Adobe Flash CS3 Professional What's New
- Adobe Photoshop CS3 Extended What's New
- Adobe Fireworks CS3 What's New
- Adobe Illustrator CS3 What's New
- Adobe Acrobat 8 Professional What's New
- Adobe Contribute CS3 At A Glance
- Adobe Device Central Overview
- Adobe Stock Photos Overview

**Better by Adobe.™**



**Adobe**

**Adobe Systems Incorporated**  
345 Park Avenue  
San Jose, CA 95110-2704  
USA  
[www.adobe.com](http://www.adobe.com)

Adobe, the Adobe logo, Acrobat, ActionScript, After Effects, Contribute, Creative Suite, Dreamweaver, Flash, Flash Lite, Fireworks, Flex, Illustrator, Photoshop, Premiere Pro, Version Cue, and "Better by Adobe" are either registered trademarks or trademarks of Adobe Systems Incorporated in the United States and/or other countries. Mac, and Mac OS are trademarks of Apple Computer, Inc., registered in the United States and other countries. QuickTime and the QuickTime logo are trademarks used under license. The QuickTime logo is registered in the U.S. and other countries. Intel is a trademark or registered trademark of Intel Corporation or its subsidiaries in the United States and other countries. PowerPC is a trademark of International Business Machines Corporation in the United States, other countries, or both. Microsoft, Windows, and Vista are either registered trademarks or trademarks of Microsoft Corporation in the United States and/or other countries. All other trademarks are the property of their respective owners. © 2006 Adobe Systems Incorporated. All rights reserved. Printed in the USA. 12/28/06