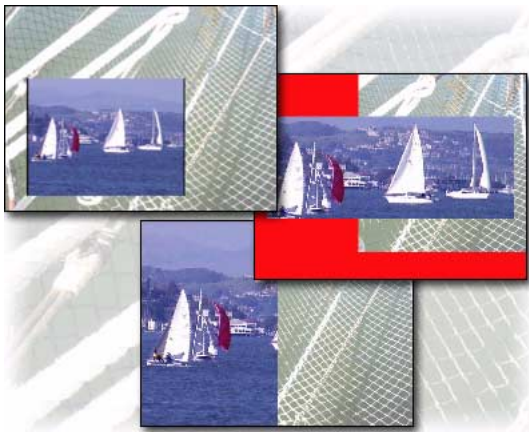


Adobe Premiere Pro

# Create a picture within a picture

Creating a picture within a picture or a split-screen has never been easier with Adobe® Premiere® Pro. Using effects, you can scale and position a clip within the video frame so that clips in the tracks above and below are visible. This tutorial explores the Crop, Garbage Matte, and Motion effects so that you can determine which one works best for your project.

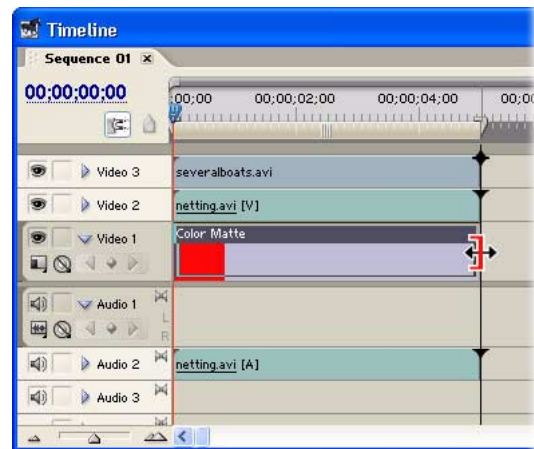


## 1. Import the clips for your image.

Import two video files into a new project. Then, adjust your work area so that it's laid out for working with effects by choosing Window > Workspace > Effects.

## 2. Arrange the order of your clips, from top to bottom.

If you want to overlap one clip with another, determine which clip will be in front and move that clip to Video track 3. Place the remaining clip in Video track 2, directly below the clip in track 3. Trim both clips to the same length and align their In and Out points. Next, create a color matte to serve as a border: Choose File > New > Color Matte. Place the color matte on Video track 1 and stretch it to the same length as the clips.



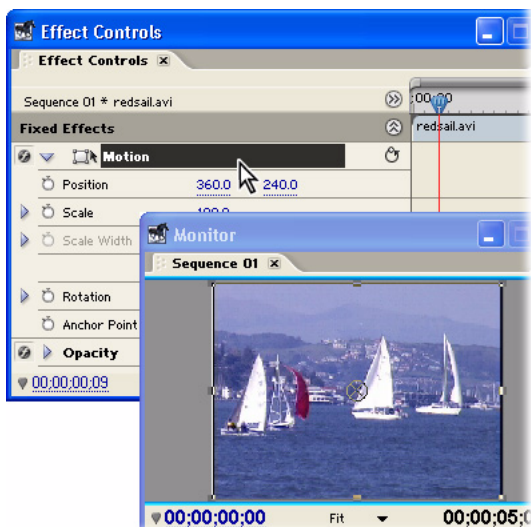
### 3. Open the Effect Controls window to view the Motion effect.

Select the clip in Video track 3 and choose Window > Effect Controls. The Effect Controls window opens, displaying the Fixed Effects. These effects are built into each clip and allow you to change intrinsic properties of a clip. Expand the Motion effect to view its position, scale, and rotation properties.

Click the Motion effect so that it's highlighted.

The handles that appear on the corners and sides of the clip in the Program view of the Monitor window allow you to manipulate the clip.

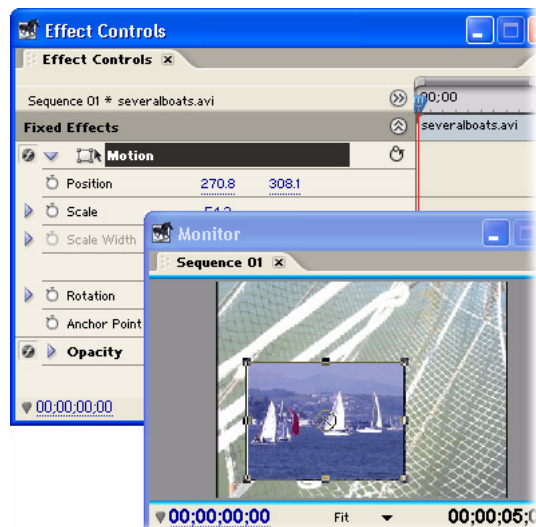
If you're unable to see the clip handles, make sure the Motion effect is selected in the Effect Controls window and change the zoom level of the Program view to a lower percentage.



### 4. Adjust the clip's scale and position properties.

In the Program view, drag a corner handle toward the center of the clip to scale the clip. Next, position the pointer over the clip and drag it to a new position. As you move the clip, the Position property values change in the Effect Controls window.

Now that you've explored the Motion effect, click the Reset button to the right of the Motion effect to return settings back to their defaults.



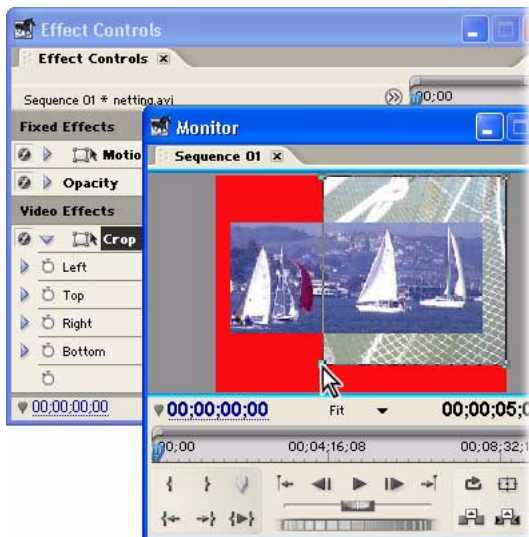
## 5. Apply the Crop effect to a clip.

You can manipulate clips in the Program view using any Standard effects that include transform controls, such as the Crop and Garbage effects. Unlike Fixed effects, Standard effects aren't built-in but must be applied to a clip to create the desired result.

To apply the Crop effect, click the Effects tab in the Project window. Expand the Video Effects bin and then expand the Transform bin. Drag the Crop effect to the clip in Video track 3 and then select the clip.

In the Effect Controls window, select the Crop effect to display clip handles in the Program view. Drag each handle to crop the image, leaving only the portion that you want to appear. Apply the Crop effect to the clip in Video track 2 and follow the same process.

When you're done exploring the Crop effect, you can remove it by selecting the effect in the Effect Controls window and pressing the Delete key. (You must select the clip in the Timeline window to see the applied effect in the Effect Controls window.)



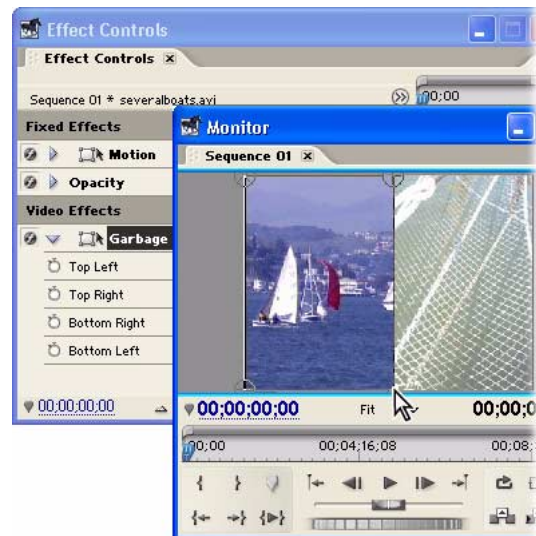
## 6. Apply the Garbage Matte effect.

In the Timeline window, move the current-time indicator to the In point of your clips and then select the clip in Video track 3.

In the Effects window, expand the Keying bin in the Video Effects bin. You can apply the Garbage Matte effect by dragging the effect directly to the Effect Controls window.

In the Effect Controls window, select the Garbage Matte effect to make clip handles appear in the Program view.

Drag the top right and bottom right handles—one at a time—to create a split-screen.



In addition to layering clips, you can animate them by setting keyframes for the Motion effect's Position property. You can also simulate perspective by using the Transform effect instead of Motion and adjusting the Skew property.

