

Adobe GoLive CS

CSS made simple

Cascading style sheets (CSS) let you control every aspect of layout and type on a Web page. Adobe GoLive CS makes creating and applying CSS styles a snap with an all-in-one CSS Editor, which enables you to create style sheets, styles, and style properties in one easy-to-use window.

In this tutorial, you'll create an external style sheet with HTML and class styles and apply it to pages in your Web site. No coding skills are required—GoLive does all the work.

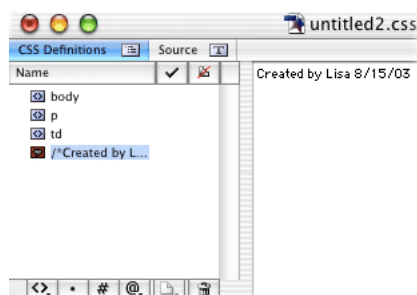


1. Create an external style sheet.

Open a site, and choose File > New Special > Cascading Style Sheet. In the right pane of the CSS Editor, expand the Advanced options and click Create Comment. GoLive inserts a comment placeholder in the CSS Definitions tab of the CSS Editor. Click in the right pane and type **Created by**, your name, and the current date. Save the CSS file in your site's web-content folder.

Use external style sheets if multiple pages in your site will share common style elements. Referencing an external style sheet, rather than creating an internal style sheet for each page, keeps file sizes small and enables you to update multiple pages by editing a single

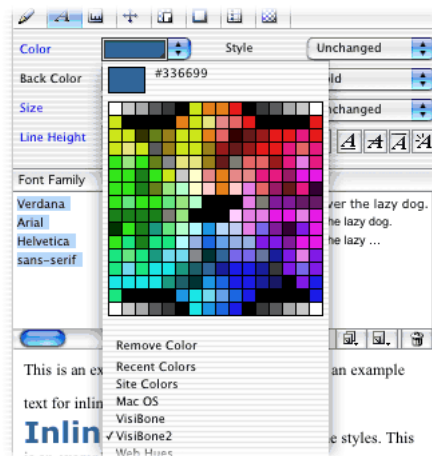
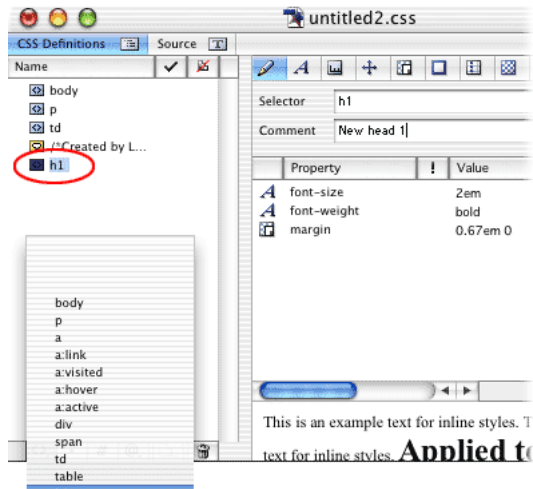
style sheet. You can also create an external style sheet based on a page's internal style sheet by exporting that style sheet and saving it in your site's web-content folder (conversely, you can import styles from an external style sheet to an internal style sheet).



2. Create an HTML style.

Click and hold the Create New Element Style button in the CSS Editor, and choose h1 from the Create New Element Style menu. Click the Selector and Properties tab of the CSS Editor and enter a comment in the Comment field. GoLive displays the current font size, font weight, and margin settings for h1 (Header 1) elements.

HTML styles apply to specific elements, and are applied automatically to all instances of the element throughout a document. Web browsers that don't support CSS will use standard HTML formatting for the element (most newer browsers, such as Opera and Microsoft Internet Explorer 4.0 or later, are CSS-capable).



3. Define HTML style properties.

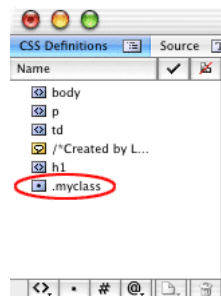
Click the Font Properties tab in the CSS Editor, click the lower right corner of the Color field, and choose a color from the swatches that appear (to choose another swatch set, select one from the list beneath the color swatches). Choose Pixel from the Size menu, and then type 22 in the Size text box. Click the Create New Font Family button and choose a font family from the menu. GoLive displays the color, size, and font you've applied to the h1 element in the Preview Styles pane at the bottom of the CSS Editor. Click the Selector and Properties tab and note that GoLive has added the color and font-family properties and modified the Font Size value.

The CSS Editor contains all the style properties that GoLive (and most browsers) support, including Font, Text, Block, Margin, Padding, Border, Outline, List Item and Background properties. You can safely experiment with properties in the CSS Editor—try applying them to a style and preview the style's appearance in the Preview Styles pane. If you don't like a property you've set, simply choose Edit > Undo Change CSS Property.

4. Create a class style.

Click the Create New Class Style button at the bottom of the CSS Editor, and type a name for the class style in the CSS Definitions tab of the CSS Editor—for example, .myclassstyle (don't include spaces or special characters in the class style name).

Class styles apply to selected text or objects on a page, rather than to all instances that share a common HTML element, and must be explicitly applied to a selection (you'll apply your class style later in this tutorial). Use class styles when you want to apply distinctive formatting for objects that you want to stand out from the rest of your text.

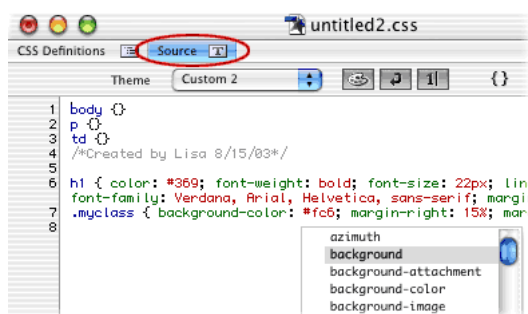


5. Define class style properties.

Click the Font Properties tab in the CSS Editor and click the Back Color field to set a background color for the class style. In the Color palette, drag the color sliders to select a color (select Only Web Colors from the Color palette menu to use only Web-safe colors: the sliders snap to Web-safe colors when you drag them), or

choose a color from the Recent Colors list in the Color palette. Click the Margin & Padding Properties tab in the CSS Editor and enter 15% in the Right and Left Margin text boxes. Note the color and margins applied to the sample text in the Preview Styles pane.

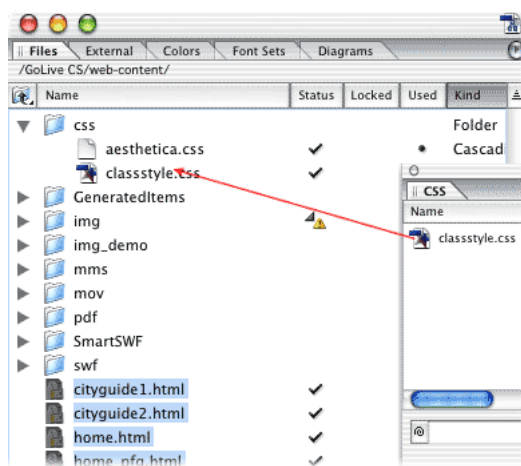
In addition to previewing style properties in the Preview Style pane, you can use the Source tab in the CSS Editor to view your style sheet's source code. GoLive updates the content of the Source tab every time you make a change in the CSS Editor. Choose a source code theme from the Theme menu in the Source tab to view the source code in different combinations of colors and fonts (you can customize themes in Source preferences). You can even hand-code CSS in the Source tab and take advantage of GoLive's code completion feature, which enables you to write code without having to look up hard-to-remember elements or attributes.



6. Reference the external style sheet.

Save the style sheet and close the CSS Editor. Select all the pages in your site that you want to use the styles contained in the external style sheet (Ctrl+click to select multiple files), and click the Create New Link to External CSS button in the CSS palette. Drag the pick whip from the CSS palette to the external style sheet in the Files tab of the site window.

In one step, you've applied a style sheet containing an HTML element style and a class style to multiple pages in your Web site. To update these pages with new styles, simply update the external style sheet and save your changes. If you decide you no longer want to reference the external style sheet from these pages, select the pages in the Files tab of the site window, select the external style sheet in the CSS palette, and click the Remove Selected Items button.



7. Apply the class style.

Open one of the pages to which you applied the external style sheet in step 6 and select a block of text. Select Block Style in the Style Apply tab of the CSS palette (alternatively, choose Type > CSS Style or click the Apply CSS Style toolbar button and select Block Style). Note that GoLive displays a pop-up window previewing the effect and displaying the style properties before you actually apply the style to the text.

Cascading style sheets mean less code, more customization and control over presentation, and easier site maintenance. This tutorial introduces you to just a few of GoLive's powerful CSS features. Experiment with the options in the CSS Editor and CSS palette to give your site a style sheet makeover.

