

From www.studio.adobe.com

Work with images in Adobe Reader

At times, you may want to extract an image from an Adobe® PDF file and use the image in another authoring program, edit the image for brightness and color balance, print images apart from the document layout, or perform a host of other tasks. As with text extractions, you start by selecting images, then you copy them and ultimately paste the images into authoring programs.

Adobe Reader® offers several options for copying image data, changing the resolution of copied images, and pasting image data into other applications.

Select images

You select images with the same tool you use to select text. You can select an image in its entirety or just a particular section using the Select tool. Once an image is selected, you can copy it to the clipboard much like text is copied to the clipboard.

To select images in Adobe Reader:

- 1 Press Ctrl/Command+K to open the Preferences dialog. Remove the checkmark for Enable text selection for the Hand tool (Figure 1). Disabling the Hand tool for text selections makes it easier to scroll the document window with the Hand tool without inadvertently selecting text.

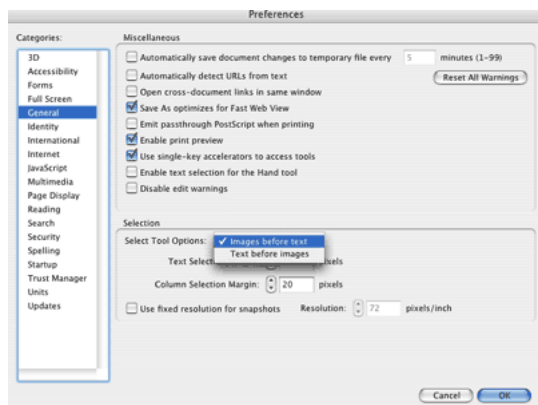


Figure 1: Uncheck the box for Enable text selection for the Hand tool and select Images before text in the Select Tool Options pull-down menu.

- 2 Click the Select Tool Options pull-down menu and select Images before text.
- 3 Click the Select tool.
- 4 Click an image. When you click the Select tool anywhere on an image, you select the entire image.
- 5 Move the cursor into the selected image. When the cursor moves into the image, a Select Image icon appears within the selection.
- 6 To deselect a selected image, click the Hand tool. With the Hand tool selected, click outside the image selection. The image is deselected.
- 7 To select a portion of an image, click and drag the Select tool in the area you want to copy as shown in Figure 3. Release the mouse button and the area is selected.



Figure 2: Click and drag the Select tool to select a portion of an image.

Copy and paste image data

You can copy any selected image or portion of an image to the clipboard. Once copied to the clipboard, you can paste the data into programs that accept the pasting of image data. If you want to edit an image after pasting it, you need to use an image editor. The two most common image editors are Adobe Photoshop® CS2 and Adobe Photoshop Elements.

To paste image data into Photoshop Elements:

- 1 Select the image you want to copy. As you move the cursor to the Select Image icon, a Copy Image to Clipboard button appears. Click the button to copy the image to the clipboard. Alternatively, you can select Edit > Copy.
- 2 Launch your image editor.
- 3 Select File > New from Clipboard. Adobe Photoshop Elements creates a new file from clipboard data. In addition, if you select File > New, both Adobe Photoshop CS2 and Adobe Photoshop Elements open a new document that's the same size as the clipboard contents. Select Edit > Paste to paste the clipboard contents into the new document window (Figure 3).

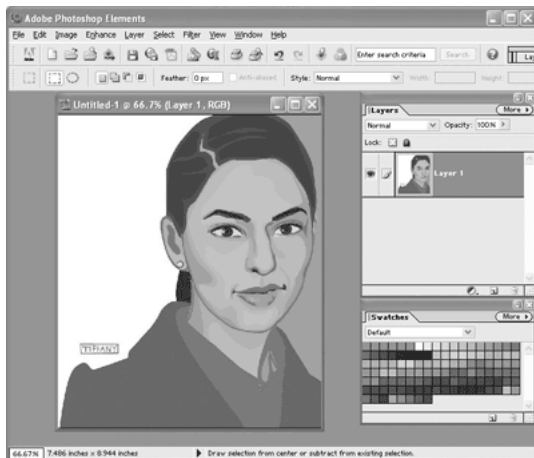


Figure 3: Select File > Paste to paste the image into a new Photoshop Elements file.

From Photoshop Elements you can adjust the image for color correction, edit the image using Photoshop Elements tools, and save the image in a format compatible with an authoring program you use to combine text and images.

Use the Snapshot tool

The Snapshot tool enables you to marquee an area on a PDF page and copy the data within the marquee to the clipboard. If you want to copy and paste both text and images together, you can use the Snapshot tool. In addition, any image that appears beneath a link or button field can be copied to the clipboard using the Snapshot tool.

To copy data to the clipboard with the Snapshot tool:

- 1 Open a file in Adobe Reader.
- 2 Click the Snapshot tool in the Adobe Reader Toolbar Well.
- 3 Drag a marquee around the area you want to copy.
- 4 Release the mouse button. A dialog appears and informs you that the selected area has been copied to the clipboard. Click OK.
- 5 Paste the data into an authoring program. You can use Adobe Photoshop Elements or Adobe Photoshop CS2 if you want to edit the image data using the same methods described in the previous section, “Copy and pasting image data.”

Adjust resolution for copied images

Image resolution is always an important consideration when copying and pasting data and when viewing images on screen or on printed pages. Screen resolutions are optimal at 72 pixels per inch (ppi) at 100% size. If you zoom in to a 72-ppi image, you quickly see image degradation. If you want to print documents containing images, 72 ppi is insufficient for almost every printer. You need higher resolutions in order to print images that look satisfactory.

You may want to copy images or page data in Adobe Reader at higher resolutions than the standard monitor view of 72 ppi. Adobe Reader has a special setting that lets you capture data at different resolutions.

To capture data at a user-definable resolution:

- 1 Open the Preferences dialog by pressing Ctrl/Command+K.
- 2 Select General in the left pane. In the Selection pane, check the Use fixed resolution for snapshots box (Figure 4).



Figure 4: Check the box for Use fixed resolution for snapshots.

- 3 Change the number in the Resolution box. Type a number—like 300—that might be used for printing images at better quality.

Note: Adobe Reader cannot improve resolution from the original image resolution used when the PDF was created. Following these steps presumes the original resolution of the image data you copied was 300 ppi or more. If the original image resolution was 72 ppi, changing the fixed resolution from snapshots to a higher resolution won't improve the image quality.

- 4 Select the Snapshot tool and drag a rectangle around the area you want to copy to the clipboard.
- 5 Open an image editor like Adobe Photoshop Elements and select File > New from Clipboard.
- 6 The clipboard contents appear in a new document window (Figure 5).



Figure 5: Create a new document and paste the clipboard contents created from the snapshot into a new document window.

- 7 Return to Adobe Reader and set the image resolution to 72 ppi as described in steps 2 and 3.

- 8 Create a new snapshot and paste the data into an image editor as described in steps 4 and 5. Zoom in on the image to roughly the same view as the first image created from the clipboard and compare the results with the snapshot taken at 300 ppi. In Figure 6 the data were copied at 72 ppi and pasted into a new Adobe Photoshop Elements document.



Figure 6: Compare the 72-ppi snapshot with the 300-ppi snapshot.

Notice that the image quality appears much better in the higher-resolution snapshot image when you zoom in on the image.

Excerpted from "Adobe Reader 7 Revealed: Working Effectively with Acrobat PDF Files" © 2005 Ted Padova. Published by Pearson Education, Inc. and Adobe Press. To buy this book, visit www.peachpit.com.