

# Adobe® Acrobat® Trust Manager Internet Resource Access Control

## TABEL OF CONTENTS

- 1 Introduction
- 2 Setting the Preferences
- 4 Controlling the Default Behavior
- 4 Pre-Configuring Acrobat

## Introduction

### Background

New to Adobe Acrobat and Adobe Reader version 7.0.5 is the capability to inform the user when a PDF file is attempting to transmit data to an internet site. This new functionality enables the user to allow or deny the transmission of the data and remember the response on a per address basis for future reference. There is also a global allow or deny option. The purpose of this document is to explain how the new Trust Manager functionality works and how in an enterprise environment the system administrator can configure systems to conform to their default settings.

### Abstract

In order to prevent malicious content from transmitting data silently from an unsuspecting user, Acrobat now requests permission from the user through a dialog that displays the address where the data will be sent. Although this added level of security provides an additional level of confidence in PDF when viewed in Adobe Reader or Adobe Acrobat, this new dialog may be cumbersome in an enterprise environment where workflows that require silent processing are occurring. In order to facilitate automated workflows this document describes:

- The user interface for managing internet access
- How a system administrator can pre-configure the registry to disable the prompt dialog
- A working example of what the user will experience

## SETTING THE PREFERENCES

To set the preferences select the **Edit > Preferences** menu item and then select **Trust Manager** from the listbox.

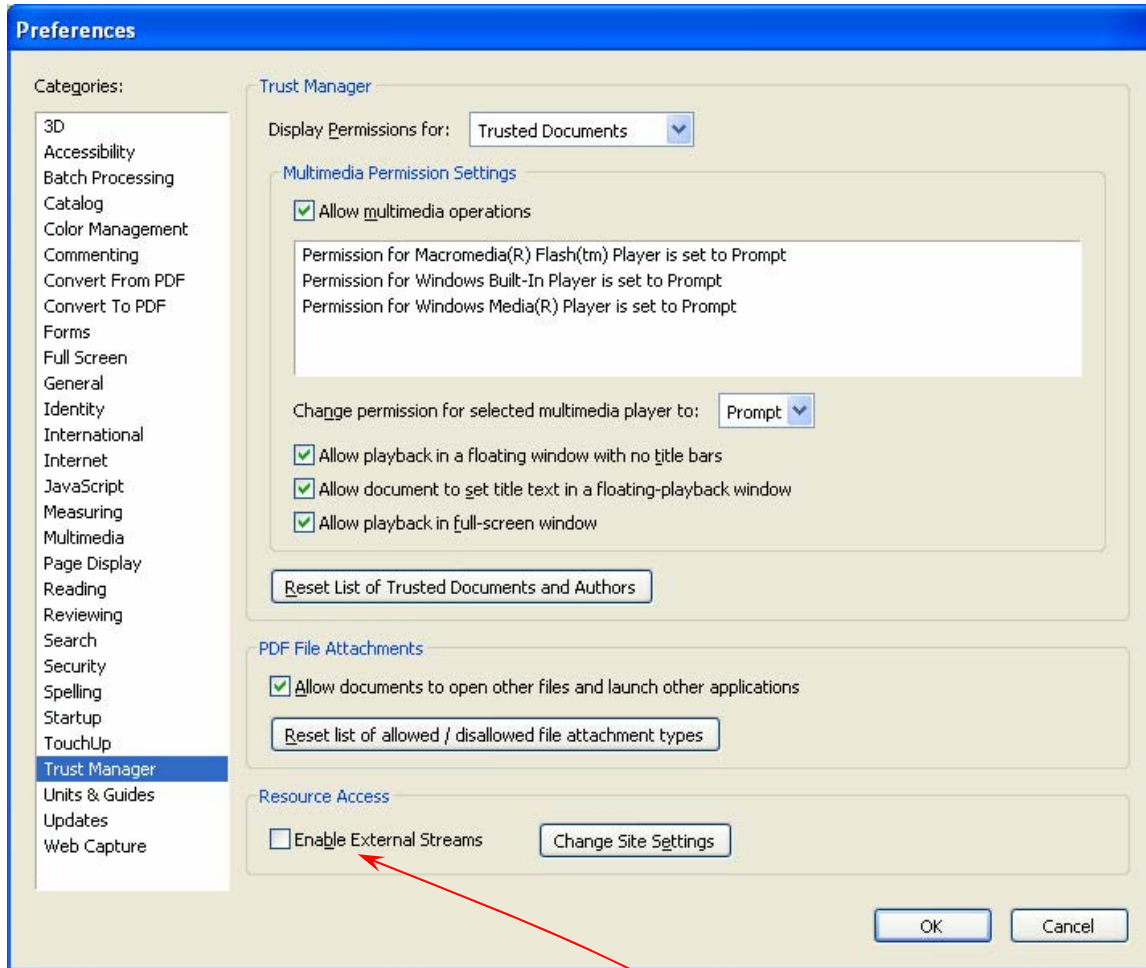


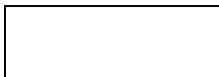
Figure 1: Preferences Dialog Trust Manager Pane

### External Streams

PDF files can contain an embedded switch that defines a host address and silently transmit data to and from the remote host. In order to prevent this from occurring, the new default behavior is the **Enable External Streams** checkbox is deselected. If you have a need for PDF files to retrieve data from a remote source, select the **Enable External Streams** checkbox.

### Remote Host Access via JavaScript

Within the properties of a form field there exists the ability to add a JavaScript call. As example if you click on the following button a browser will be spawned and try to take you to the Example web site.

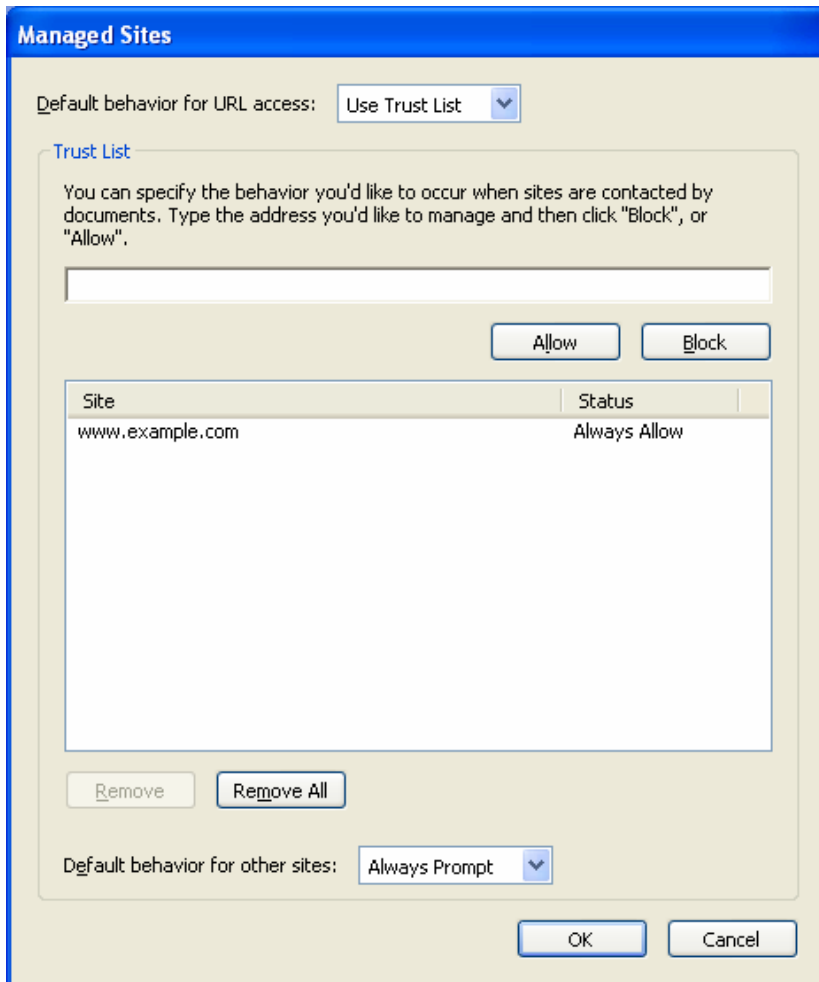


Although this is an example of a call to a remote site that involves UI (in that the JavaScript spawns the browser), it could just as easily have been a JavaScript call that was silent. In order to provide the user with the option to make or deny the connection Acrobat displays the following Security Warning dialog (Figure 2).

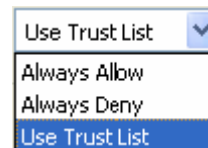


**Figure 2: Remote Access Security Warning Dialog**

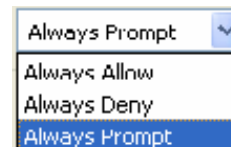
If you choose to select the **Remember my action for the site** checkbox the URL will be added to the Managed Sites dialog (Figure 3) which can be accessed by clicking the **Change Site Settings** button on the Preferences dialog (Figure 1)



**Figure 3: Managed Sites Dialog**



**Figure 4: Default behavior for URL access drop-down list**



**Figure 5: Default behavior for other sites drop-down list**

## Controlling the Default Behavior

Although the default setting is to **Use Trust List**, there are two other options (Figure 4) available. If you select **Always Allow** then Acrobat will make the connection without prompting the user. If you select **Always Deny** then Acrobat will never make the connection, nor will Acrobat advise the user why the connection was not established. When selecting **Use Trust List**, the prompt dialog occurs if the URL does not yet exist in the list. Items in the list behave predicated on their status; those that are set to Always Allow will make the connection without prompting the user while those whose status is Always Deny will simply do nothing.

If you elect to use the trust list to manage access to known sites, you have the option to continue to have Acrobat prompt for unknown sites or always allow or deny access to unknown sites. You can accomplish this by making a selection from the **Default behavior for other sites** drop-down list (Figure 5)

## Pre-Configuring Acrobat

### Pre Populating the Trust List

If there are certain sites you want to enable or block by default, you can add the URL to the list manually by typing it into the edit field above the list box and then clicking the **Allow** or **Block** button as appropriate. Once you have built this list you can export the **HKEY\_CURRENT\_USER\Software\Adobe\Adobe Acrobat\7.0\TrustManager** key from the Windows registry. On the Macintosh, you would have to navigate to the Users:<user>:Library:Preferences folder and open either the com.adobe.Acrobat.7.0.plist (used with the Acrobat Standard edition) or the com.adobe.Acrobat.Pro7.0.plist (used with the Acrobat Professional edition) and then extract everything between

```
<key>TrustManager</key>
<dict>
```

```
?
```

```
</dict>
```

### Importing the Data

All of the settings extracted from the **HKEY\_CURRENT\_USER\Software\Adobe\Adobe Acrobat\7.0\TrustManager** key can either be imported as is for each installation, or you can modify the REG file and change **HKEY\_CURRENT\_USER** to **HKEY\_LOCAL\_MACHINE** for enterprise installations where the computer will support multiple users.

Acrobat does not support the concept of shared preferences on the Macintosh. You would need to devise a method of programmatically writing the data into the plist file for each user.

Adobe helps people create, manage, and deliver  
the highest quality digital content in the world.  
**Better by Adobe.**™

**Adobe Systems Incorporated**

345 Park Avenue, San Jose, CA 95110-2704 USA  
[www.adobe.com](http://www.adobe.com)

The information in this document is for informational use only and subject to change without notice. It should not be construed as a commitment by Adobe Systems Incorporated. Adobe Systems Incorporated assumes no responsibility or liability for any errors or inaccuracies that may appear in this document. The software described in this document is furnished under license and may only be used or copied in accordance with the terms of such license.

Adobe, the Adobe logo, Acrobat, Acrobat Capture, and Distiller are trademarks of Adobe Systems Incorporated. Microsoft and Windows are registered trademarks and ActiveX is a trademark of Microsoft in the U.S. and other countries. Macintosh is a trademark of Apple Computer, Inc. registered in the U.S. and other countries. PowerPC is a trademark of International Business Machines Corporation. UNIX is a registered trademark in the U.S. and other countries, licensed exclusively through X/Open Co. Ltd. All other products or name brands are trademarks of their respective holders.

© 2005 Adobe Systems Incorporated. All rights reserved.

07/05