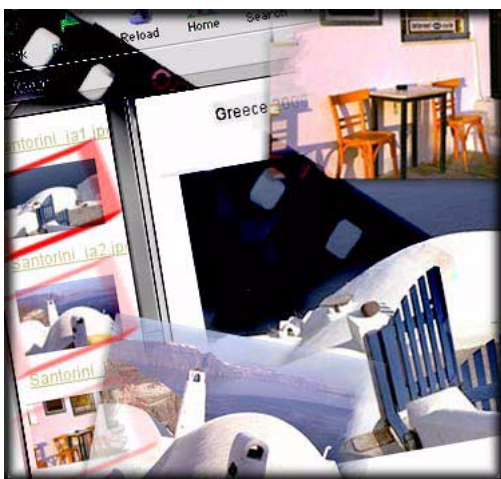


Adobe Photoshop Elements 2.0

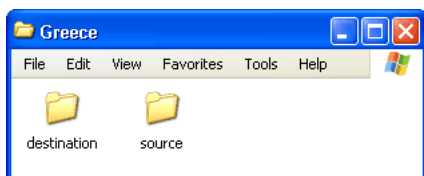
Create web photo galleries

Want to organize your images into an online gallery? Need to put together a quick portfolio for a prospective client to view? Learn how the Web Photo Gallery tool in Adobe® Photoshop® Elements 2.0 generates a gallery with easy navigation for viewing your images in a browser.



1. Set up your image files.

Make sure your images are in a folder (called the *source folder*). Also, create a *destination folder* to contain all of the HTML and image files generated for your Web gallery.

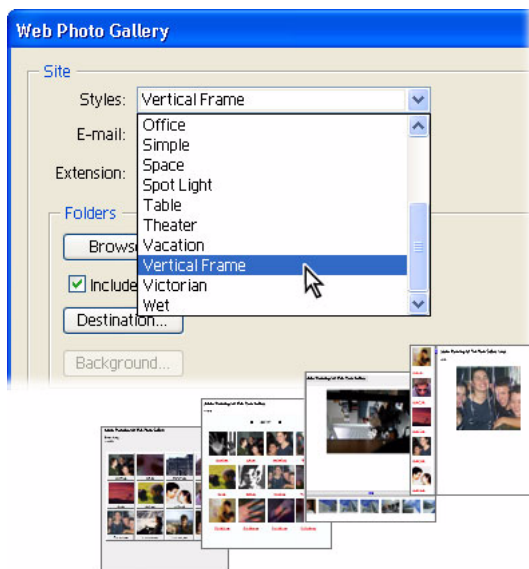


2. Choose a style and set up your banner.

Choose File > Create Web Photo Gallery. In the Web Photo Gallery dialog box, use the Styles menu to choose the format of your gallery. A preview of the style appears on the right side of the dialog box.

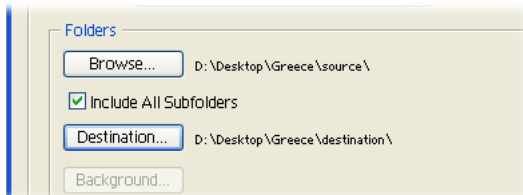
Now choose Banner in the Options menu, and enter the title of your Web gallery in the Site Name field. You can also fill in the Photographer, Contact Info, and Date fields if desired. Use the Font and Font Size menus to determine the text appearance in your banner. In the Font Size pop-up, the larger the number, the bigger the font size will be.

We chose the Vertical Frame style for our gallery and for the Banner options, we used Helvetica/Arial with the default size of 3.



3. Choose your source and destination folders.

Click the Browse button under Folders in the dialog box, and choose the folder containing the images you want to appear in your gallery. Then, click Destination, and select the folder that you want to contain the images and the HTML files for your Web gallery.

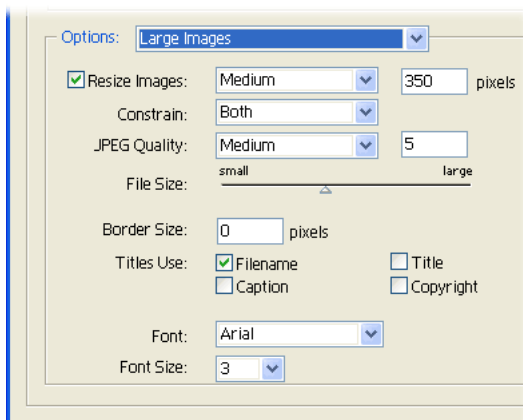


4. Determine how your images are displayed.

Decide whether your gallery images are displayed with borders, resized or not, and at what level of optimization.

Choose Large Images from the Options pop-up menu. Enter the values for Resize Images, Constrain, and JPEG Quality. For your convenience, you can drag the slider to set the JPEG quality. If you don't want your images resized, deselect Resize Images.

With Resize Images selected, we left all the settings at their defaults.



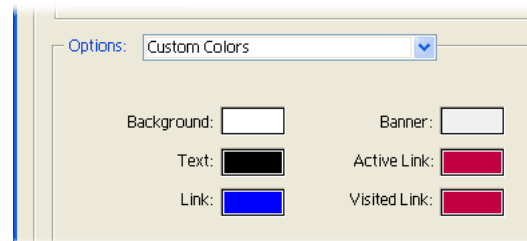
5. Determine the look of your thumbnails.

You can specify the appearance of your gallery's thumbnails and the captions.

Choose Thumbnails from the Options pop-up menu. For Title, select Filename to appear as a caption under your thumbnail.

6. Make your gallery colorful.

The background of your Web gallery can be the default white or any color you wish. You can also specify the color of the text and links. Choose Custom Colors from the Options pop-up menu. Use the Adobe Color Picker to make any color changes.



7. View your gallery in a browser.

Click OK and Photoshop Elements generates your Web gallery. The HTML files and JPEGs for your Web gallery are placed in the destination folder. Once the process is finished, your browser is launched with your Web gallery displayed.

