

Rollovers in Image Ready 2

by [Roxanne Etheridge](#)



If you just finished the [easy round buttons tutorial](#), then you have a button image. If not, you can download it from that tutorial, or use images of your own.

1. After you have made the button in Photoshop, save it and then click file>jump to>Image Ready 2.0
2. The file that was active in Photoshop at the time you jumped will be opened in Image Ready. Go to the Rollover palette. If it isn't visible, go to window>show rollover. Its default location is at the bottom of the screen. [*fig 1*]



fig 1

3. The active image is shown in the rollover palette as the 'normal' state image.
4. To create the rollover state, click the 'new' icon at the bottom of the rollover palette. [*fig 2*]

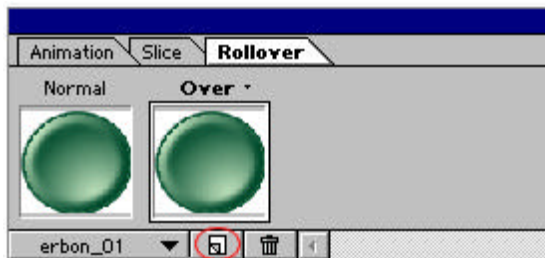


fig 2

5. The new rollover state is named 'over', and is identical to the normal state at this time. To change

that, go to the layers palette, and duplicate the layer by dragging it to the new layer icon. [fig 3]

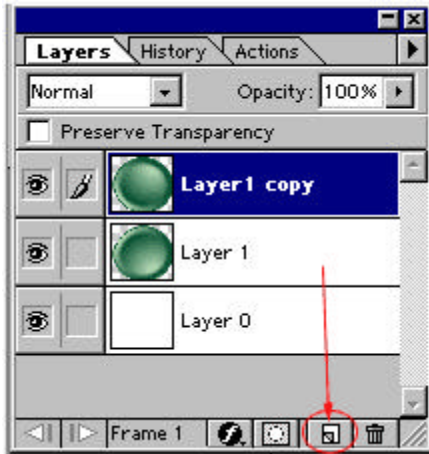


fig 3

6. Click the eye next to layer 1 and make it invisible. With the new layer active, go to edit>transform>flip vertical [fig 4]

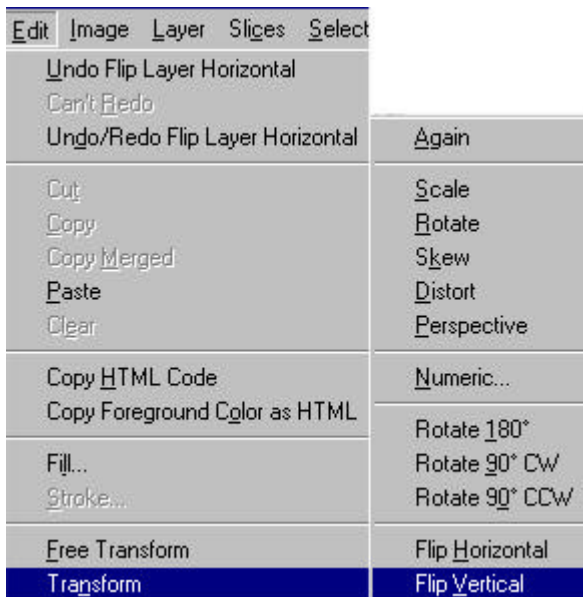


fig 4

7. You now have a basic rollover! You can preview it by going to file>preview in>Your Browser (Where it says your browser it will say Internet Explorer or Netscape, what ever your browser is). So, Image Ready has created the rollover state and generated the html code for you to copy and

paste into your webpage. You could also create another state for 'mouse down' or various other things. Use your mouse to click the arrow next to the active state to see the available states left to create. [fig 5]



fig 5

By default, Image Ready will create over first, then down.

8. Now you can [optimize](#) and save the file. To save, click save optimized as, and be sure to click save html file on the save as dialog box. [fig 6]

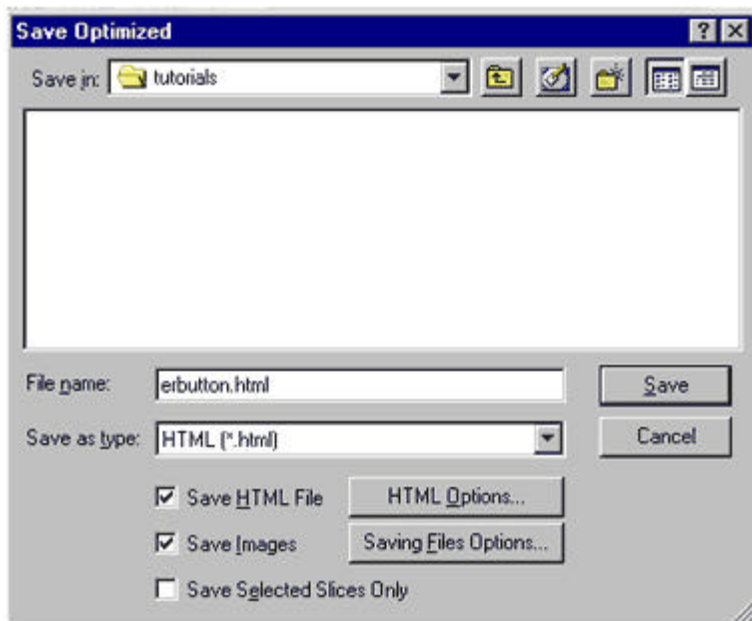


fig 6

[Back](#) | [Home](#) | [Tutorials](#) | [email](#) |

© Roxanne Etheridge 1997-2000 all rights reserved

the end