

# **Configuring Adobe® Acrobat® 8 with Adobe® License Manager**

Windows User Guide



## Configuring Acrobat 8 with ALM

### Windows User Guide

---

#### Contents

About This Document.....	1
About Adobe® Acrobat® 8.....	1
About Adobe® License Manager (ALM) .....	1
Preparing Acrobat 8 for Deployment.....	2
What you need to get started .....	2
Copying the installer files.....	2
Pre-serializing Acrobat 8.....	3
Preparing the Client License Setup file.....	4
Installing Acrobat 8.....	5
Additional Customizations via the Client License Setup File.....	6
E-License Download Options .....	6
Path to the In-House License Server .....	6

## **About This Document**

This document describes the steps needed to prepare the deployment of your Acrobat 8 for Windows when managing licenses electronically and with e-licensing disabled. Proper implementation of these steps is critical, regardless of your organization deployment mechanisms: manually from machine to machine, from a file server, using a standard image, or pushing application packages out using a software distribution tool.

## **About Adobe® Acrobat® 8**

The new Adobe Acrobat 8 Professional software enables business professionals to reliably create, combine, and control Adobe PDF documents for easy, more secure distribution, collaboration, and data collection.

## **About Adobe® License Manager (ALM)**

Adobe License Manager (ALM) is a new embedded license management solution for Adobe's most popular desktop applications. ALM is first included in Acrobat 8 for the Windows operating system, and will be included in new versions of desktop applications as they are released for Windows and Mac OS X operating systems. ALM automates the tracking of software licenses while minimizing the resource and cost burden associated with manual license reconciliation.

## Preparing Acrobat 8 for Deployment

Acrobat 8 requires some minimal preparation to work properly with electronic licensing enabled or disabled.

If you selected to manage your Acrobat 8 licenses electronically using any hosting model for your pool of licenses other than Serial Number-Only, you will need to pre-serialize the application and include the Client License Setup file with the installer.

Likewise, if you disabled e-licensing for any given order, you will still need to pre-serialize the Acrobat 8 and include the Client License Setup file with the installer provided for this.



**Important:** *If you set up the e-licenses for your order to be hosted at Adobe using your Serial Number-Only, you do not need a Client License Setup file and do not need to follow the instructions on this document.*

### What you need to get started

To prepare Acrobat 8 for deployment, you need the following three items:

1. Acrobat 8 installer software, obtained via electronic software distribution (ESD) download from the Adobe Licensing Website (LWS) or licensing media purchase.
2. Serial number.
3. Acrobat 8 Client License Setup file (Acrobat-8.0-ALL-PS-[REM/LOC/AME].xml)

Both the serial number and the Client License Setup file are available on the Adobe Licensing Web site. The setup file corresponds to the hosting method you chose for your e-licenses, or if you disabled e-licensing for Acrobat 8.

### Copying the installer files

You will need to copy the Acrobat 8 installer files to a temporary folder to prepare for the deployment. The process is slightly different if you are copying the installer files from the volume licensing media or the ESD download (electronic software distribution).

If you have the Acrobat 8 volume licensing media, simply copy the contents of the CD-ROM to a temporary folder (for example: C:\Acrobat 8 temp).



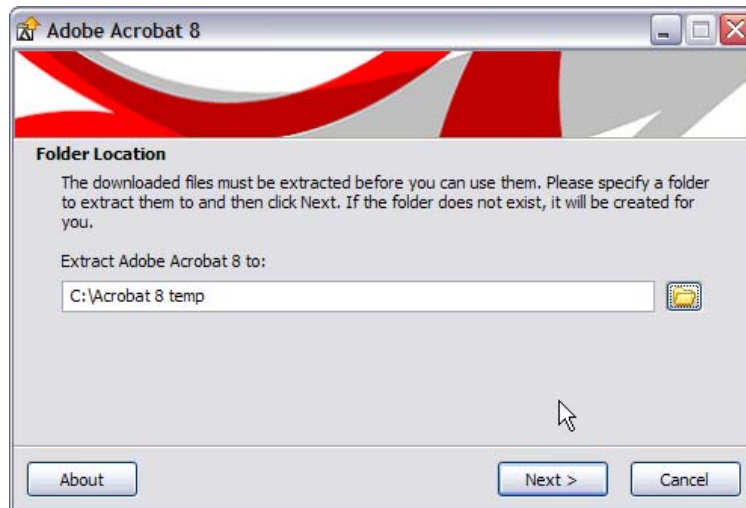
**Double-Byte Known Limitation –Important:** *The installation process fails if the temporary folder is on a path with double-byte characters (Japanese, Chinese and Korean are all double-byte characters). Create the temporary folder on a path with ASCII (single-byte) characters only (for example: C:\Acrobat 8 temp). The destination directory (where the application files will be installed) can include single- and double-byte characters.*

If you downloaded the Acrobat 8 ESD package from LWS, follow these steps:

1. Double-click the Acrobat 8 download package.



2. Select the desired temporary folder by clicking on the folder icon, then click **Next>** (Do not use a temporary folder on a path with double-byte characters).



**Figure 1.** Select destination folder in the Acrobat ESD file expansion wizard

3. After the files are expanded, select **Open the specified folder**. Make sure Launch Adobe Acrobat 8 is *not* checked.
4. Click Finish.

You are now ready to pre-serialize the application.

### ***Pre-serializing Acrobat 8***

The process for pre-serializing Acrobat 8 (Standard or Professional) is the same regardless of the hosting method set up for your e-licenses or if e-licensing was disabled.

To pre-serialize Acrobat 8 for deployment within your organization, follow these steps:

1. Open the temporary folder where Acrobat 8 installer files were copied to (for example: C:\Acrobat 8 temp).
2. Open the file Abcpy.ini with a text editor (Notepad or WordPad for example).

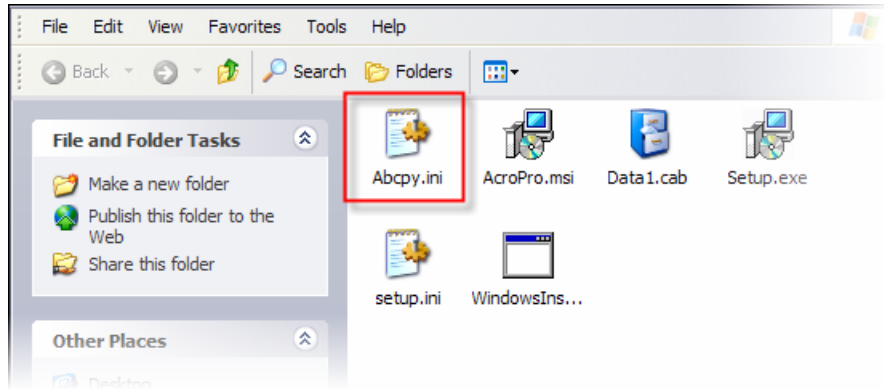


Figure 2. Abcpy.ini file in the Acrobat installer temporary directory

3. Locate the variable `ISX_SERIALNUMBER=` variable in and paste your Acrobat 8 serial number.
4. Save and close the file.

You are now ready to prepare the Client License Setup file.

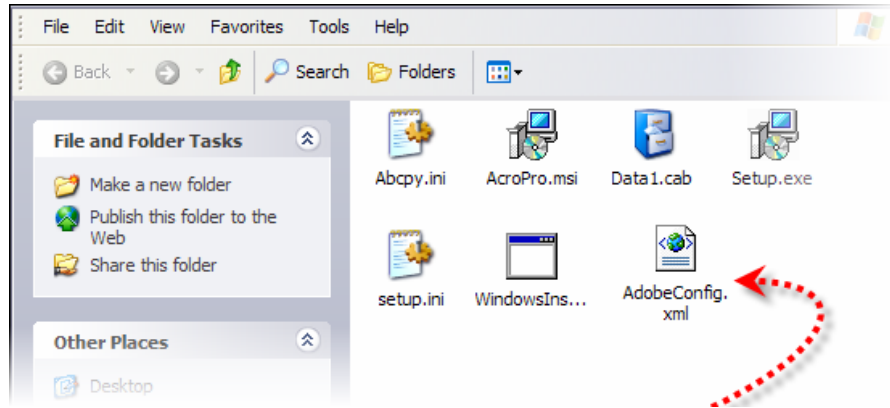
### ***Preparing the Client License Setup file***

The Client License Setup file is used by Acrobat 8 to locate the license pool you set up for your organization.

1. Locate the Client License Setup file downloaded from LWS.  
The default file name corresponds to the hosting method selected for license pool: at Adobe with custom options (Acrobat-8.0-ALL-PS-REM.xml), in-house (Acrobat-8.0-ALL-PS-LOC.xml), or disabled (Acrobat-8.0-ALL-PS-AME.xml).
2. Change name of the Client License Setup file to `AdobeConfig.xml` (the file name is *not* case sensitive).

*Note:* It is recommended that you unhide filename extensions when renaming this file. If filename extensions are hidden and you call your file `AdobeConfig.xml`, your file is actually called `AdobeConfig.xml.xml`, and will not work properly.

3. Copy the `AdobeConfig.xml` file to the temporary Acrobat 8 installer directory (for example: `C:\Acrobat 8 temp`)



**Figure 3.** Rename the Client License Setup file and copy it to installer folder



**Important:** If you setup your e-licenses to be managed in-house, you must edit the Client License Setup file (*AdobeConfig.xml*) to enter the path to your license server. You can also customize how much of the e-license download process end-users see via this file (see below for instructions on additional customizations and in the Client License Setup file itself).

## Installing Acrobat 8

You can now continue with the installation of Acrobat 8 as usual by double-clicking the installer (*Setup.exe*), or using your preferred deployment tool (Microsoft SMS or other).

To verify that the installer properly copied the Client License Setup file to the correct location, install Acrobat 8, open the ALM configuration files folder and compare the *AdobeConfig.xml* file in that directory with your customized file. The ALM configuration files folder is normally located at:

C:\Program Files\Adobe\Acrobat 8.0\Acrobat\alm\_config\_files.

If the *AdobeConfig.xml* in the ALM configuration files folder does not correspond to the one you prepared, you can either manually copy the custom Client License Setup file to this folder or uninstall the application and review each step in the process described in this document.



**Important:** If you are creating a deployment image for software distribution or to post on a file server for users to install themselves, make sure the application installs properly and that the correct Client License Setup file (*AdobeConfig.xml*) is copied to the appropriate location before general deployment to end-users' machines.

## Additional Customizations via the Client License Setup File

You can edit the Client License Setup file to customize specific aspects of ALM when licenses are managed electronically, and for a hosting method other than Serial Number-Only (which does not use a Client License Setup file). Any customizations must be made during the *Preparing the Client License Setup file* process, prior deployment.

### ***E-License Download Options***

You can determine how visible the e-license download process is to end-users by editing the Client License Setup file with a standard text editor (WordPad recommended).

1. Locate the <LicenseDownloadOptions> tag within the file.

2. Type the desired option among the following three choices:

Verbose: The user sees the Download E-License dialog box.

SilentLicenseDownload: The application attempts to download an e-license without displaying any message. In case of an error, the application displays a message and allows the user to initiate a grace period.

AllSilent: The application attempts to download an e-license without displaying any message. In case of an error, the application does not display a message to the user and initiates the grace period silently.

*Note: With the AllSilent option, the user receives a message only when the initial 30-day grace period expires.*

3. Save and Close the file.

### ***Path to the In-House License Server***

When managing e-licenses in-house, the application connects to your local License Server to download the e-license. You use the Client License Setup file (AdobeConfig.xml) to specify the path to your server.

1. Using a standard text editor (WordPad recommended), find the <LicenseServer> tag within the file.

*Note: This tag is only present in the Client License Setup file when you choose to manage your license pool in-house.*

2. Use the <Description> tag to enter an optional description for the license server (for example, Engineering and Operations Licenses–Western Region)
3. Use the <ServerURL> tag to specify the path to the in-house license server.

The format for the path is port@hostname or port@ipaddress (for example, 8000@licenses.XYZcorp.com or 8000@192.168.0.1). Adobe recommends you use the

fully qualified domain name rather than the IP address in case you need upgrade your server or if you need to reconfigure your network after the application is deployed.

You can use the default port range 27000 to 27009 specified for the License Servers, in which case you can omit the port number (for example, @licenses.XYZcorp.com or @192.168.0.10).



**Important:** *In order for the application to communicate with the License Server properly, the host name of the server must use ASCII characters only. If your host is not named using ASCII characters and cannot be changed, use the IP address option instead.*

4. Save and Close the file.