

# Migrating from Legacy Versions of Illustrator to Illustrator CS2

## A Technical Resource

### TABLE OF CONTENTS

- 1 Importing, saving, and exporting Illustrator files
- 3 Working with text
- 5 Working with objects and colors
- 7 General document settings
- 8 Major features added
- 8 Resources

Upgrading tools in a work environment is not a trivial task even when the overall goal is a more efficient and beneficial workflow. But there are many benefits in upgrading from previous versions of Adobe® Illustrator® to Adobe Illustrator CS2, including better integration with Adobe Creative Suite components like Adobe Photoshop®, Adobe InDesign®, Adobe GoLive®, and Adobe Acrobat®. In addition, support for open standards like OpenType®, PDF/X, SVG-t, CSS, and XMP help ensure that Illustrator CS2 is a perfect fit in any workflow.

When upgrading to Illustrator CS2, one of the main concerns is converting an existing library containing years of legacy Illustrator files. A legacy Illustrator file is any document created in a version of Illustrator older than CS2 (version 12). Another valid concern is learning to adapt to all that's new in Illustrator, as many features have been modified, updated, or even changed completely. This document is a technical resource for bringing legacy Illustrator content into Illustrator CS2; it also includes information on some of the major differences in key features. For details about the new features in Illustrator CS2, see the Discover Illustrator CS2 guide on the Adobe website at [www.adobe.com/products/illustrator/pdfs/AI\\_DiscoveryGuide\\_for\\_Web.pdf](http://www.adobe.com/products/illustrator/pdfs/AI_DiscoveryGuide_for_Web.pdf).

### Importing, saving, and exporting Illustrator files

While Illustrator CS2 can open legacy files directly, some files may be changed. This is mainly due to the new technologies in Illustrator CS2. In this section, we will explore how best to open, save, and export files from Illustrator CS2.

#### What is the best way to import my legacy Illustrator files into Illustrator CS2?

The easiest and best way to bring legacy content into Illustrator CS2 is simply to open it in Illustrator CS2. Depending on which version of Illustrator the file was saved in, you may see differences in how these files look when opened:



- **Illustrator 10 and older legacy files:** Illustrator CS2 opens the document and adds the name “converted” to the file name. Text has to be updated to be edited.

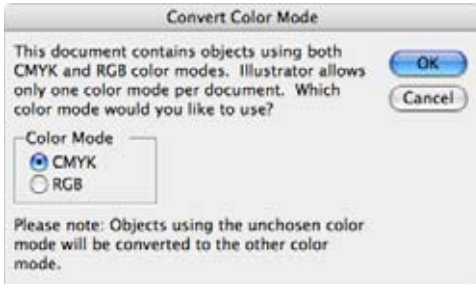


- **Illustrator CS legacy files:** Illustrator CS2 opens the document as normal. Text does not have to be updated.

For more information on why the text in certain legacy files must be updated, and the benefits of doing so, see *Working with text* on page 2.

**When I open a legacy Illustrator file, I am sometimes presented with a Convert Color Mode dialog box. What does this mean?**

Prior to Illustrator 9, documents could contain both RGB and CMYK data. In Illustrator CS2, documents are restricted to use a single color mode, similar to Photoshop. If you open a document that contains both CMYK and RGB data, Illustrator asks you what color mode you want to work in, and converts all colors to match the chosen color space. To manually change a document's color space in Illustrator, choose File > Document Color Space.



*When you open a document that contains both CMYK and RGB elements, Illustrator asks you to choose a single color mode.*

**How can I save my file back to use in a legacy version of Illustrator?**

To save an Illustrator CS2 file so that it can be opened in a legacy version of Illustrator, choose File > Save As and then choose Adobe Illustrator Document from the Format pop-up menu in the Save As dialog box. Click Save to open the Illustrator Options dialog box and choose the desired compatibility setting from the Version pop-up menu. Be aware that saving files from Illustrator CS2 back to a legacy version can cause all text to be converted to outlines. See *Working with text* for more details.



*When saving a native Illustrator file, you can choose which version of Illustrator you want the file to be compatible with.*

When a file contains transparency, saving back to version 8 or earlier results in the flattening of any transparency in the file. Illustrator allows you to choose to Preserve Paths, which discards the transparent effects and keeps the editability of the paths intact, or you can choose Preserve Appearance And Overprints to retain the overall appearance of the file, but sacrifice editability.

### How do I create a PDF from Illustrator CS2?

To create an Adobe PDF file from Illustrator, choose File > Save As. Then, choose Adobe PDF from the Format pop-up menu, and click Save. In the Save Adobe PDF dialog box, specify options for the resulting PDF file (these options can also be saved as PDF Presets, which can be shared across Adobe Creative Suite applications). For more information, see the PDF file creation section of the Print Resource Center on the Adobe website at [www.adobe.com/studio/print/designer.html#pdfcreation](http://www.adobe.com/studio/print/designer.html#pdfcreation).

### How do I export a GIF or a JPEG file from Illustrator CS2?

To export GIF or JPEG images for use on the web, choose File > Save For Web. In the Save For Web dialog box, you can preview and export your art in many web file formats including GIF, JPEG, PNG, WBMP, SWF, and SVG.

### How do I create Flash® (SWF) files from Illustrator CS2?

There are two ways to export Illustrator files to SWF files: Choose File > Export and then choose Macromedia Flash (.SWF) from the Format pop-up menu, or use the Save For Web feature.

### Can I place duotone images into Illustrator CS2?

Yes, you can place duotone images saved from Photoshop, and link or embed them.

### Does Illustrator CS2 support DCS 2.0 files?

Illustrator CS2 supports DCS 2.0 files only in a nontransparency workflow. If a DCS image interacts with transparency, the image won't print as expected. To see if a placed DCS image interacts with transparency, choose Palette Options from the Links palette menu and select Show DCS Transparency Interactions. With this setting turned on, yellow icons in the Links palette identify images that interact with transparency. For more reliable results, save spot-color files from Photoshop as native PSD or Photoshop PDF files. Refer to the Designer's Guide to Transparency for information about how transparency is introduced in a document.



*The Show DCS Transparency Interactions option helps you locate DCS images that interact with transparency.*

## Working with text

Illustrator contains a next-generation Unicode-compliant text engine that provides full support for OpenType® fonts as well as optical kerning, optical margin alignment, every-line composing, and multilingual hyphenation and spell checking. The following section covers issues that you might encounter when importing and working with text.

### When I open a legacy Illustrator file, a dialog box tells me that I must update the text in the file.

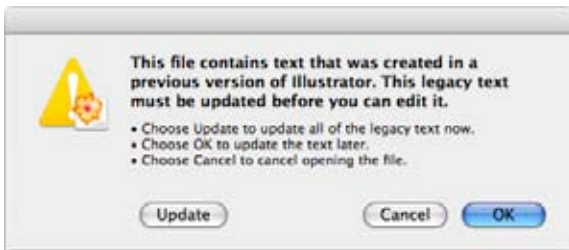
#### What is the reason for this, and what happens to my text when it is updated?

Because of the new text engine introduced in Illustrator CS and its advanced technology, text isn't directly compatible with legacy versions of Illustrator. You can think of this as a line drawn in the sand, with Illustrator CS2 and CS on one side, and all older versions on the other. Therefore, when opening legacy files in Illustrator CS2, any text has to be updated before you can edit it. There are several different options for updating text, as during the update process, some text reflow may occur.

**Note:** *Text reflow here refers to adjustments in kerning and line breaks that may result in updated text having a different appearance than the text in the legacy file.*

## Opening Legacy Illustrator Files in Illustrator CS2

When you open a legacy file in Illustrator CS2, you're presented with a warning dialog that states the following: "This file contains text that was created in a previous version of Illustrator. This legacy text must be updated before you can edit it." The dialog presents you with three options:



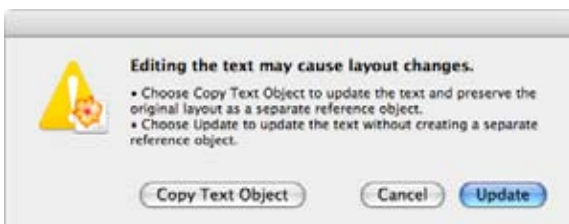
When opening a file, Illustrator alerts you if the document contains legacy text.

- **Update** converts all of the legacy text so it is compatible with the text engine in Illustrator CS2. This process may result in some of your text reflowing and having different line breaks and kerning. However, sometimes no reflow occurs.
- **Cancel** doesn't open the legacy document.
- **OK** opens the document without updating the text—the file opens just as it did in Illustrator 10 or earlier. However, legacy text, which appears in the document much like a placed file—in a box with an "X" through it—cannot be edited. You can print the file and make edits to other objects in the file, but Illustrator treats the text as a *foreign object*.

When opening a legacy file where you know you will be changing or deleting the text, choosing Update is the best method, as text will reflow anyway. If, however, you want to open a file so that you can quickly print it, or if text placement is important (which it usually is), choosing OK is the better choice.

## Updating legacy text in an open document

If you open a legacy file without updating the text, you can still update the text on an object-by-object basis by selecting the Type tool and clicking a legacy text object. Illustrator presents a dialog box with three options:



If you try to edit legacy text, Illustrator returns a dialog box so that you can update the text first.

- **Copy Text Object** updates the legacy text and makes it editable. Some reflow may occur in the conversion, but Illustrator creates a copy of the legacy text on a locked and dimmed layer beneath the converted text. If the new text does reflow, you will see the difference between it and the old text. You can then adjust the new text to match the legacy text. To delete the dimmed copy, choose Type > Legacy Text > Delete Copies.
- **Cancel** leaves the legacy text as a foreign object—it can be printed, but not edited.
- **Update** updates the text so that you can edit it. However, a copy of the legacy text is not created, so if the text does reflow, you may not be able to tell.

You may find that when you're updating text, no significant reflow occurs. If, after updating several text objects, you decide to convert all of the legacy text at once, you can choose Type > Legacy Text > Update All Legacy Text.

For more information on updating legacy text, see Working with Type in Illustrator CS2 on the Adobe website at [www.adobe.com/products/illustrator/pdfs/Text\\_in\\_AICS2.pdf](http://www.adobe.com/products/illustrator/pdfs/Text_in_AICS2.pdf).

### Does Illustrator CS2 maintain kerning or text styling when importing files?

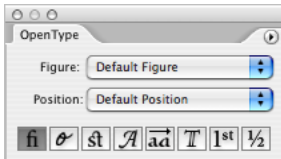
Where possible, editable kerning values are retained when you open legacy files in Illustrator CS2. However, the new text engine introduced in Illustrator CS uses a more advanced kerning method and may cause some reflow within your text.

### Does Illustrator CS2 support Unicode text?

Yes, the text engine in Illustrator CS2 is Unicode-compliant. For more information on the Unicode standard, see [www.unicode.org](http://www.unicode.org).

### Does Illustrator CS2 support OpenType fonts?

Yes, Illustrator has full support for OpenType fonts. OpenType is an open standard font format that is Unicode-based and that supports advanced features like automatic glyph replacement. For more information on OpenType fonts, visit the Adobe website at <http://studio.adobe.com/us/type/main.jsp?xhtml=opentype/main>.



The OpenType palette in Illustrator enables you to easily access the added functionality built into OpenType fonts.

### When I open a PDF or EPS file that wasn't created in Illustrator, text is broken into individual text blocks. Is there any way to avoid this?

No. In order to preserve kerning and the appearance of text objects, text in imported generic EPS or PDF files (that is, EPS or PDF files created with an application other than Illustrator) is not imported as a single string of editable text.

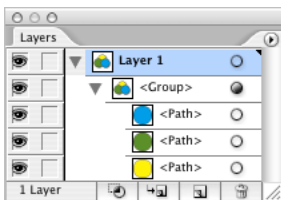
To combine multiple text objects into a single text string, you can use the Selection tool to select the different type objects, switch to the Type tool and create a new area text object, and then choose Edit > Paste.

## Working with objects and colors

There are some differences in how Illustrator CS2 works with objects and colors. This section discusses how to understand these differences and how to take advantage of the newer technology.

### Why does the appearance of my objects sometimes change when I ungroup them?

With Illustrator CS2, groups can contain attributes like strokes and fills, and effects like drop shadows. Since these effects can be applied at the group level, ungrouping removes the effects. Shaded circles in the Layers palette help identify groups that have effects or appearances applied to them.



The shaded circle to the right of the Group entry in the Layers palette indicates that an appearance has been applied to that group. Ungrouping such a group will result in a loss of the effect and a change in the appearance of the grouped objects.

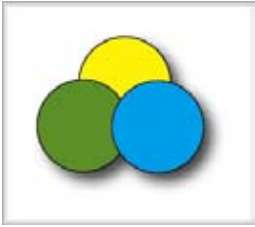
### In Illustrator 8 and 9, there was a Unite function in the Pathfinder palette. Where is the Unite feature now?

In Illustrator 10, the Pathfinder palette was updated to better match some of the functionality found in Photoshop. The Unite filter was replaced with the Add To Shape Area function that also appears in the Pathfinder palette.

You can still achieve the same functionality of the old Unite function by holding the Option key (Mac) or Alt key (Windows) while clicking the Add To Shape Area icon.

### Why do I sometimes see a gray box around my selected objects?

In Illustrator CS2, double-clicking on a group activates Group Isolation Mode. This allows you to draw new objects directly in the isolated group. To exit Group Isolation Mode, double-click outside the gray box. The gray box does not print.



*When you double-click a group, Illustrator indicates Group Isolation Mode by displaying a gray box around the perimeter of the grouped objects.*

### I thought that Illustrator had 3D tools, but I can't find them. Where are they?

3D in Illustrator is applied to existing graphics as a live effect through the Effect menu. Choose Effect > 3D and then choose Extrude & Bevel, Revolve, or Rotate to apply a variety of 3D effects to your artwork or text objects.

### Why is there both a Filter menu and an Effect menu in Illustrator CS2? It appears that both of these menus contain the same features. Is there a difference between them?

At first glance, it appears that many of the features listed in the Filter menu are duplicated in the Effect menu. The Effect menu, which contains editable effects, was added in Illustrator 9. As effects are applied to objects, the effects are listed in the Appearance palette. At any time, you can double-click the effects to edit them or you can remove them entirely, as they are nondestructive. In contrast, any feature applied from the Filter menu is destructive and cannot be edited after it has been applied.

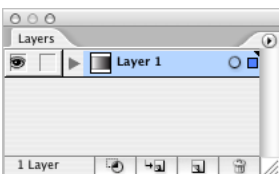
### Illustrator 10 contained filters called Ink Pen and Photo Crosshatch. Do these still exist in Illustrator CS2?

The Ink Pen filter (also known as hatch effects) and the Photos Crosshatch features aren't available in Illustrator CS2. To achieve results similar to what those filters could create, choose Effect > Stylize > Scribble.

### When I create a mask in Illustrator CS2, all of my selected objects are moved into the topmost layer. Why does this happen and how can I avoid this?

When Illustrator CS2 creates a mask, it also groups the mask with the artwork that is being masked. Because all objects within a group must reside in the same layer, creating a mask forces Illustrator to move all masked items into the same layer as the mask itself.

To maintain layer structure, use a Layer Clipping mask by first drawing a shape that you want to use as a mask. Bring the object to the top level of the layer. In the Layers palette, highlight the layer that contains the shape and click the Create/Release Clipping Mask button at the bottom of the palette. The top-most path is listed with an underline in the palette and clips all objects within that layer.



*With a layer highlighted in the Layers palette, clicking on the Make/Release Clipping Mask icon makes the top-most object in that layer a mask for all contents in that layer.*

### Does Illustrator CS2 contain the newer Pantone color libraries?

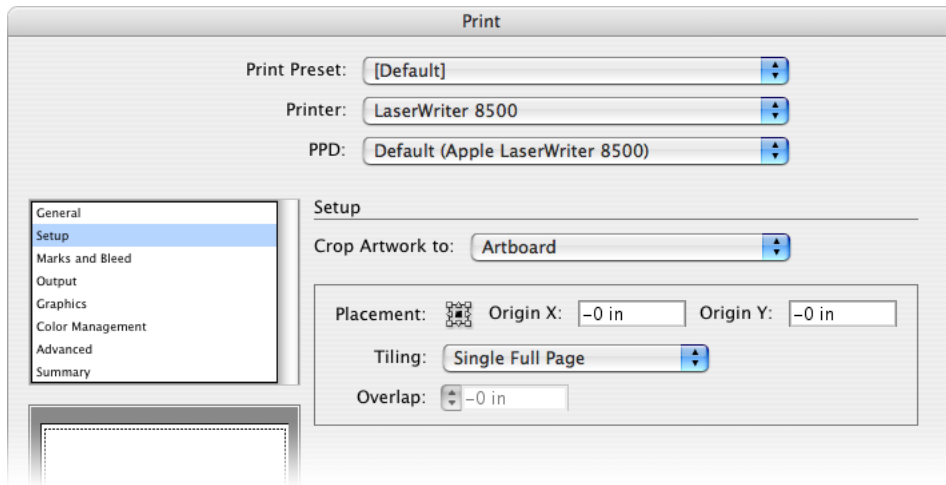
Yes, Illustrator CS2 contains the updated Pantone libraries that were created in 2000. Choose Window > Swatch Libraries to access any of the 10 Pantone libraries included with Illustrator: Metallic Coated, Pastel Coated, Pastel Uncoated, Process Coated, Process Uncoated, Solid Coated, Solid Matte, Solid Uncoated, Solid to Process Coated, and Solid to Process Uncoated.

## General document settings

Illustrator CS2 contains a wide range of features that can be used to be more productive, to express your creativity, and to push the boundaries of design. This section explores general application use and offers guidance on how to get the most out of the latest version of Illustrator.

### How do I specify page tiling in Illustrator CS2?

In Illustrator CS2, many of the functions that were once found in the Page Setup dialog box have been consolidated and moved into the Print dialog box. To set up page tiling in Illustrator CS2, choose File > Print and navigate to the Setup panel. Here you can specify Tiling options and also specify an Overlap value. When you've completed the changes, click Done in the Print dialog box.



Options for specifying page tiling can be found in the Setup panel of the Print dialog box.

### The Paintbucket tool in Illustrator CS2 seems to act differently than in previous versions.

#### What has changed?

The Paintbucket tool has been replaced with the Live Paintbucket tool in Illustrator CS2. This new tool is used to create and edit Live Paint Groups, which allow you to paint vector graphics more easily. For more information on how Live Paint Groups work, see the Discover Illustrator CS2 guide on the Adobe website at [www.adobe.com/products/illustrator/pdfs/AI\\_DiscoveryGuide\\_for\\_Web.pdf](http://www.adobe.com/products/illustrator/pdfs/AI_DiscoveryGuide_for_Web.pdf).

### Illustrator used to have an Autotrace tool that could be used to convert bitmap images to vectors.

#### Is that tool still available?

Illustrator CS2 has a powerful new feature called Live Trace, which enables you to convert bitmapped images into vector paths. This feature replaces the Autotrace tool. For detailed information on the Live Trace feature, see *Creating Vector Content Using Live Trace* on the Adobe website at [www.adobe.com/products/illustrator/pdfs/creating\\_vector\\_content.pdf](http://www.adobe.com/products/illustrator/pdfs/creating_vector_content.pdf).

### I have heard that transparency effects don't always print reliably from Illustrator. Is this true?

Most printers today can handle artwork with transparency with no adverse effects. For transparency effects (like blend modes or soft drop shadows) to print to a PostScript device, the transparency must be flattened. This process happens automatically when you print your file, save it in EPS format, or export it to any format that doesn't support transparency. For information on how transparency flattening works, see *The Designer's Guide to Transparency* on the Adobe website at [www.adobe.com/products/creativesuite/pdfs/dgt.pdf](http://www.adobe.com/products/creativesuite/pdfs/dgt.pdf).

### I have heard that Illustrator supports metadata. What does that mean?

Metadata is information that describes the content of a document, which can then be used in searches. Illustrator has full support for the Extensible Metadata Platform (XMP) standard for storing metadata, and such information can be added to a file either using the File Info dialog box or Adobe Bridge. For more information on the XMP Metadata standards, please visit the Adobe website at [www.adobe.com/products/xmp/main.html](http://www.adobe.com/products/xmp/main.html).

## Major features added

Each version of Illustrator introduces new features and functionality. Below is a list of added features beginning with the release of Illustrator 9.

ILLUSTRATOR 9	ILLUSTRATOR 10	ILLUSTRATOR CS	ILLUSTRATOR CS2
Flash and SVG export	Symbols	New text engine	Live Trace
Save For Web	Symbolism tools	Paragraph and character styles	Live Paint
Pixel Preview mode	Web slicing	WYSIWYG font menu	Control palette
Web-safe RGB colors	Variables palette	3D effects	Saved workspaces
Release to Layers	Enhanced SWF export	Scribble effect	Colorize grayscale images
Transparency	SVG import	Enhanced PDF support and presets	Spot color support for drop shadow
Live effects	SVG effects	Acrobat layer support	Align Stroke
Appearance palette	Envelopes	Save for Microsoft Office	Enhanced SWF export
Opacity masks	Warp effect	Startup (Welcome) screen	Adobe Swatch Exchange support
Layer clipping masks	New drawing tools	New Print dialog box	SVG-Tiny support
Graphic styles	Compound shapes	New print engine	SVG-Basic support
Nested layers	Flare tool	Fit To Page command	PDF/X support
Integrated PDF support	Magic Wand tool	New template (.ait) format	
Simplify path	Select menu	Version Cue support	
Lasso tools	Native Mac OS X support	Enhanced Photoshop export	
Customizable keyboard shortcuts	XMP support	Scripting support	
	Transparency flattener presets		

Visit the Adobe Design Center ([www.adobe.com/designcenter](http://www.adobe.com/designcenter)) for helpful tips and tutorials on how to get the most out of the features in Illustrator.

## Resources

For additional information on the topics discussed in this document, see the following documents:

Creating vector content using Live Trace

[www.adobe.com/products/illustrator/pdfs/creating\\_vector\\_content.pdf](http://www.adobe.com/products/illustrator/pdfs/creating_vector_content.pdf)

Working with type in Adobe Illustrator CS2

[www.adobe.com/products/illustrator/pdfs/Text\\_in\\_AICS2.pdf](http://www.adobe.com/products/illustrator/pdfs/Text_in_AICS2.pdf)

Extensible Metadata Platform (XMP)

[www.adobe.com/products/xmp/main.html](http://www.adobe.com/products/xmp/main.html)

Support for OpenType fonts

<http://studio.adobe.com/us/type/main.jsp?xhtml=opentype/main>

The Designer's Guide to Transparency

[www.adobe.com/products/creativesuite/pdfs/dgt.pdf](http://www.adobe.com/products/creativesuite/pdfs/dgt.pdf)

**Adobe Systems Incorporated**  
345 Park Avenue, San Jose, CA 95110-2704 USA  
[www.adobe.com](http://www.adobe.com)

Adobe, the Adobe logo, Illustrator, Photoshop, Acrobat, GoLive, and InDesign are either registered trademarks or trademarks of Adobe Systems Incorporated in the United States and/or other countries. Mac OS is a trademark of Apple Computer, Inc., registered in the United States and other countries. Microsoft, Windows, and OpenType are either registered trademarks or trademarks of Microsoft Corporation in the United States and/or other countries. All other trademarks are the property of their respective owners.

© 2006 Adobe Systems Incorporated. All rights reserved.

