



Release Notes

English

Darwin for InDesign

1.1

Copyright

Copyright © 2005 Creo Inc. All rights reserved. Data subject to change without notice.

Creo and the Creo logo are trademarks or registered trademarks of Creo Inc. The Creo products mentioned in this document are trademarks or service marks of Creo Inc. and may be registered in certain jurisdictions. Apple, AppleShare, AppleTalk, EtherTalk, LaserWriter, LocalTalk, and Macintosh are trademarks of Apple Computer, Inc., registered in the U.S. and other countries. Adobe and PostScript are trademarks of Adobe Systems Inc., are registered in the U.S. Patent and Trademark Office, and may be registered in other jurisdictions as well. Acrobat, the Acrobat logo, and Adobe Illustrator are trademarks of Adobe Systems Incorporated, which may be registered in certain jurisdictions. Microsoft, Windows, and Windows NT are registered trademarks or trademarks of Microsoft Corporation in the U.S. and/or other countries. AIX, PowerPC, and RS/6000 are registered trademarks of International Business Machines Corporation. Other company and brand, product, and service names are for identification purposes only and may be trademarks or registered trademarks of their respective holders.

No copying, distribution, publication, modification, or incorporation of this document, in whole or part, is permitted without the express written permission of Creo Inc. In the event of any permitted copying, distribution, publication, modification, or incorporation of this document, no changes in or deletion of author attribution, trademark legend, or copyright notice shall be made. No part of this document may be reproduced, stored in a retrieval system, published, used for commercial exploitation, or transmitted, in any form by any means, electronic, mechanical, photocopying, recording, or otherwise, without the express written permission of Creo Inc. This document is distributed in Adobe Systems Incorporated's PDF (Portable Document Format). You may reproduce the document from the PDF file for internal use. Copies produced from the PDF file must be reproduced in whole.

.....
Creo Inc.
3700 Gilmore Way
Burnaby, B.C., Canada
V5G 4M1
Tel: +1.604.451.2700
Fax: +1.604.437.9891
<http://www.creo.com>
.....

Revised June 2005

Contents

- Introduction** **1**
 - About Darwin 1
 - Accessing the Latest Version of Darwin 1
 - What Is in These Release Notes 1

- New Features** **2**

- System Requirements** **2**

- Problems Fixed** **3**
 - Grouped VI Elements 3
 - InDesign Pages 3
 - Fonts in Images..... 3
 - Older InDesign Version Support 3

- Limitations** **4**
 - Bleed and Crop Marks 4
 - Suppress Empty Line 4
 - Running Darwin for InDesign 4
 - Charts 4
 - InDesign Features 4
 - Upgrade to Adobe Creative Suite 2..... 5
 - Working with InDesign Versions 6
 - Mac OS X 7

- Known Problems** **8**
 - Facing Pages 8
 - Duplicating Jobs 8
 - VI Element Properties 8
 - Synchronization 8

Introduction

We are pleased to send you the latest revision of Darwin for InDesign™ software. These release notes highlight the new features, known problems, and limitations of the release version 1.1 of Darwin for InDesign software. Where appropriate, they refer you to the Darwin for InDesign version 1.0 User Guide (part number 731-00407A) for more information. Changes made after the User Guide was published are described in detail in these release notes.

About Darwin

Darwin for InDesign is a variable information (VI) authoring tool that plugs in to the Adobe® InDesign® Creative Suite 2 (CS2) software. Darwin for InDesign enables you to design, author, and manage full-color VI documents in which all elements—text, graphics, charts, colors, layouts, backgrounds, and even entire pages—are dynamic. Native to Mac OS X, the Darwin aqua-based user interface provides you with a familiar working environment. The software efficiently handles large databases, allowing you to create extensive personalized marketing and promotional campaigns for increased return on investment. Output formats include Creo Variable Print Specification, for optimal speed and performance with a Spire™ color server (optional); optimized PostScript®; and Xerox® VIPP®.

Accessing the Latest Version of Darwin

For the latest version of the Darwin for InDesign software, please see the Darwin for InDesign Web pages at <http://www.creo.com/darwin>.

What Is in These Release Notes

The release notes include the following sections:

New Features—describes new menu commands, options, windows, or dialog boxes that were added to Darwin software.

System Requirements—lists the system requirements for this Darwin for InDesign release.

Problems Fixed—lists problems that have been fixed since the last release.

Limitations—lists the limitations in this Darwin for InDesign release.

Known Problems—lists problems that are not yet resolved.

New Features

This release of Darwin for InDesign has the following new features:

- Works with InDesign CS2
- Works with Mac OS X version 10.4
- In addition to Variable Print Specification, the Darwin for InDesign now supports the following output formats:
 - Optimized PostScript
 - Xerox VIPP: available as part of the Darwin Pro upgrade kit

System Requirements

This section lists the system requirements for Darwin for InDesign.

- Power Macintosh G3 or later
- 128 MB available memory
- Mac OS X v10.3 or later
- The correct Creo PPD (depends on the system to which you are printing)
- InDesign CS version 3.x or later, or InDesign CS2
- 500 MB disk space

Problems Fixed

This section lists known problems that were fixed in this release.

Grouped VI Elements

In this version, you can print grouped VI elements.

InDesign Pages

If you moved a job to a different location—for example, to a different disk—you can now reopen the job in InDesign.

Fonts in Images

Fonts in images that are not used elsewhere in the document are now embedded in the Variable Print Specification.

Older InDesign Version Support

This version now supports versions of InDesign earlier than version 3.x.

Limitations

This section lists the limitations in the Darwin for InDesign software.

Bleed and Crop Marks

Bleed and crop marks are not supported in this version.

Suppress Empty Line

Empty text lines will only be suppressed in print.

Running Darwin for InDesign

You cannot run Darwin for InDesign and Darwin 6.5 at the same time.

Charts

You cannot create charts with more than 10 fields.

InDesign Features

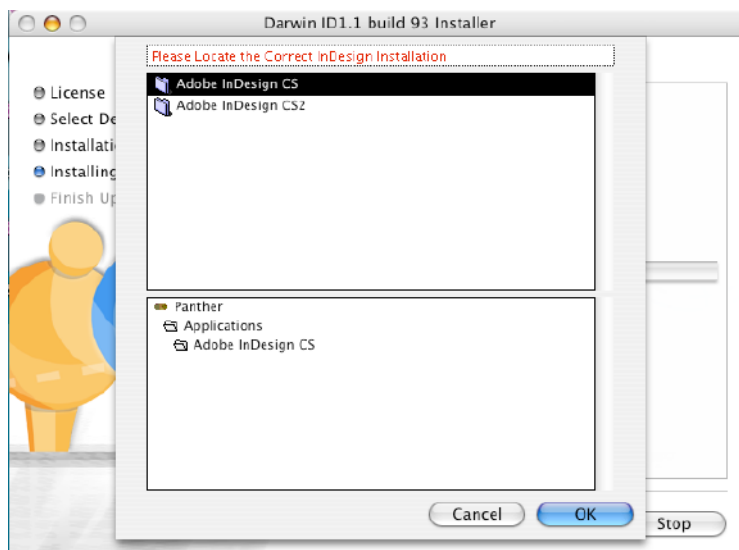
The following InDesign features are not supported for fixed or VI elements in this version:

- Transparency
- Shadow
- Feather

Upgrade to Adobe Creative Suite 2

When you upgrade from Adobe CS to CS2, InDesign CS2 is installed but does not overwrite the existing InDesign version. After upgrading to CS2, reinstall Darwin for InDesign, and perform the following steps:

1. Follow the easy installation as described in the Darwin for InDesign version 1.0 User Guide.
2. During the installation, select the destination for the Darwin files (the same location where the InDesign CS2 files are stored).
3. Select the InDesign version you want to work with, i.e. InDesign CS2, and click **OK**.



4. When the installation is complete, export your jobs from InDesign CS, and import them to InDesign CS2.



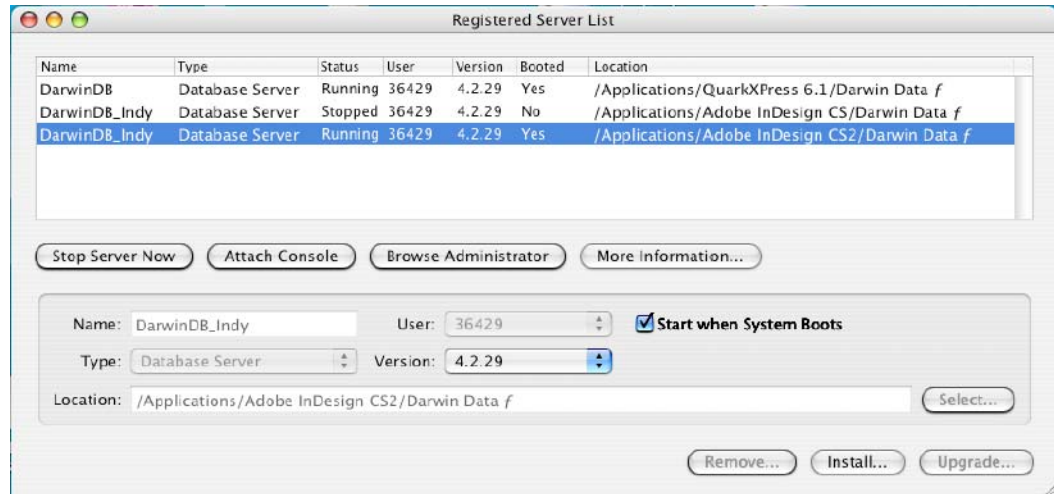
For more information on exporting and importing jobs, refer to the Darwin for InDesign version 1.0 User Guide.

Working with InDesign Versions

Darwin for InDesign can work with only one running InDesign database at a time. You can work with one InDesign version when the other is not running.

To switch between InDesign versions:

1. In the PrimeBase Launcher, select the InDesign database server that is currently running InDesign.



2. Click **Stop Server Now**.
3. Select the InDesign database server that you want to use.
4. Click **Start Server Now**.

You can now open the InDesign you want to work with and begin working.

Mac OS X

If you perform the Darwin software easy installation on a new version of Mac OS X v10.4, the following message appears after the installation:



➤ Click **Fix**.

The Macintosh restarts and the Darwin installation is complete.



Note: This does not apply to versions of Mac OS X v10.4 where the version has been upgraded from v10.3.

Known Problems

This section lists known problems in Darwin for InDesign software. They may be outstanding issues from a previous release or new problems. When a problem listed here is resolved, the solution is described in the *Problems Fixed* section of the release notes for the next version of Darwin for InDesign software.

Facing Pages

In cases where a VI element straddles facing pages, the element is only printed on the first of the two pages.

Duplicating Jobs

Duplicating jobs can cause InDesign to fail.

VI Element Properties

- **Use Thousand Separator** does not work in this version.
- **Add trailing zeros** does not work in this version.
- You can delete VI fields and rules only from the Darwin CoPilot.

Synchronization

There can be a synchronization problem between Darwin and the Darwin CoPilot.