

Adobe® Certified Expert Program

Product Proficiency Exam Bulletin

Adobe® Dreamweaver CS4 Recertification Exam Exam # 9A0-091

ACE Certification Checklist

The checklist below will help guide you through the process of obtaining ACE certification.

- Review this bulletin to become familiar with the topic areas and objectives of the exam.
- Identify the topic areas and objectives you need to study.
- Determine which study materials you need to improve your skills.
- For a list of recommended study materials, visit:
<http://www.adobe.com/misc/training.html>
- Study for the exam.
- Contact Pearson VUE to register for an exam: *<http://www.pearsonvue.com/adobe>*
- When registering for the exam, refer to the exam number located at the top of this bulletin.
- Take the exam.

Your score is electronically reported to Adobe. Please allow 2-4 weeks from the date you pass the exam to receive your ACE Welcome Kit.

Exam Structure

The following lists the topic areas and percentage of questions delivered in each topic area:

Topic Area	% of Exam	# of Questions
Understanding Web technologies	14%	4
Managing sites	10%	3
Remote connectivity	7%	2
Working in Design view	10%	3
Working in Code view	10%	3
Working with templates	7%	2
Working with assets	7%	2
Designing pages with CSS	14%	4
Testing Web pages and sites	10%	3
Application development	10%	3

Number of Questions and Passing Score

- 29 questions
- 72% minimum required to pass

Test Content: Topic Areas and Objectives

Following is a detailed outline of the information covered on the exam.

1. Understanding Web technologies

- List and describe the infrastructure required to implement and deploy Web sites.
- Given a scenario, explain the requirements for supporting video, PDF documents, and SWF.
- Explain how to mitigate page weight.
- List and describe the difference between client-side and server-side scripting.

2. Managing sites

- Given a scenario, create a site. (Scenarios include: using the Site menu bar and Files panel)
- Locate files associated with a Dreamweaver site.
- Manage files associated with a Dreamweaver site. (Including: moving, deleting, renaming, copying, associating)

3. Remote connectivity

- List and describe the methods available for connecting to a remote server. (Methods include: ftp, sftp, WebDAV, and network file share)
- Configure local, testing, and remote servers.

4. Working in Design view

- Describe options available for positioning objects. (Options include: AP DIV, CSS and tables)

- Design a page by using a tracing image.
 - Given a visual aid, explain the purpose of and/or when to use that visual aid. (Visual aids include: Layers, tables, CSS, invisible elements)
- 5. Working in Code view**
- Configure preferences for Code view.
 - Manage code by using Code view. (Options include: Collapsing, word wrap, highlighting invalid code, and formatting)
 - Explain how to get information about tags. (Options include: Properties Panel and the Tag Editor)
- 6. Working with templates**
- Create editable areas in templates.
 - Create and use editable attributes.
- 7. Working with assets**
- Manage assets by using the Assets panel.
 - Given a media type, insert and deploy that media type into a page. (Media types include: SWF, FLV, Flash Paper, images)
- 8. Designing pages with CSS**
- Create and work with AP elements.
 - Create and attach style sheets to pages.
 - Explain the behavior of inheritance with respect to styles and style sheets.
- 9. Testing Web pages and sites**
- Validate that pages and sites conform to accessibility standards.
 - Describe the HTML reports that are available for testing.
 - Identify and fix broken links.
- 10. Application development**
- Create forms and use data sets by using Spry.
 - Describe the functionality provided by the Behaviors panel and the Server Behaviors panel.
 - Describe the role of an application server.

Practice Exam

Try out these practice questions to get a feel for the types of questions on the ACE exam. Please note that your performance here does not indicate how you will do on the actual exam. To fully prepare for the exam, closely review the topic areas and objectives in this Exam Bulletin.

1.3 Explain how to mitigate page weight.

You have been receiving complaints from your user community that pages on your website are slow to load.

How can you mitigate this problem?

- A. select Commands > Externalize JavaScript
- B. reduce the image quality of your JPEG images
- C. strip all extraneous spaces from your html file
- D. all of the above

Correct answer: D

1.3 Explain how to mitigate page weight.

Which action does NOT help mitigate page weight?

- A. remove extra white space in the code
- B. optimize and compress all image files
- C. replace JPEG images with GIF images
- D. format pages and text using Cascading Style Sheets

Correct answer: C

2.1 Given a scenario, create a site.

You have been tasked with editing and maintaining your company's website in Dreamweaver. You install a copy of Dreamweaver on your computer, start the program, and are ready to create a new site.

Under which three interfaces will you find the Manage Sites menu? (Choose three.)

- A. the File menu
- B. the Site menu
- C. the Files panel
- D. the Sites menu in the Application bar

Correct answer: B, C, D

2.2 Locate files associated with a Dreamweaver site.

Which interface contains the Expand/Collapse button that allows you to expand your view and manage local and remote files side-by-side?

- A. Files panel
- B. View menu
- C. Assets panel

D. all of the above

Correct answer: A

2.3 Manage files associated with a Dreamweaver site.

You need to move and delete multiple files within your website.

What are two benefits of completing this task within Dreamweaver? (Choose two.)

- A. Dreamweaver automatically updates links within the site for the moved files.
- B. Dreamweaver produces an automatic report of all file actions that you complete.
- C. Dreamweaver warns you if deleting a file will affect other files within your site.
- D. Dreamweaver does not allow you to create orphaned files while managing your site.

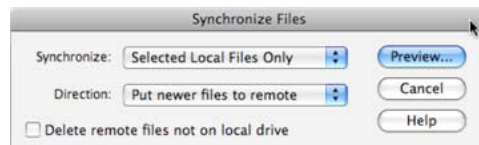
Correct answer: A, C

3.2 Synchronize files.

Modified pages have been uploaded to the site 'ABC Company' by a co-worker. You have made changes to additional files for the same site on your local machine but have not uploaded them. You want to upload your changes to the site. You click the Synchronize button in the File panel to allow Dreamweaver to manage the process.

Which option synchronizes your computer and the server to the most current file set without overwriting any of the modified files?

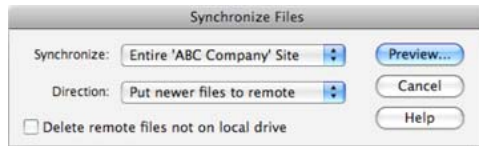
A.



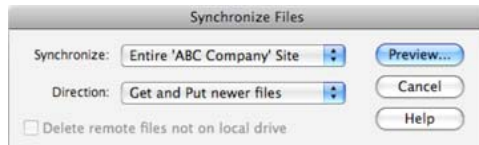
B.



C.



D.



Correct answer: D

4.4 Work with the Properties Panel and the Tag Editor.

You are editing an HTML file that references an externally linked JavaScript file.

Which commands do you use to load the JavaScript file into Code view while keeping the HTML page visible in Design view?

- A. select the Coder Plus Workspace
- B. Layout > Code view > Split Vertically
- C. Design view, Commands > Externalize JavaScript
- D. Split view, click on the .js file in the Related Files bar

Correct answer: D

5.5 Explain how to select blocks of code in Code view.

The Select Parent Tag tool enables you to select code elements and their contents quickly and efficiently. Refer to the screen shot below:

How many times would you click the Select Parent Tag tool to select the contents of the <body> tag?

- A. one time
- B. two times
- C. three times
- D. four times

Correct answer: D

8.2 Create styles for typography and positioning by using the CSS Property inspector.

You need to center a single paragraph `<p>` on a web page. You insert the cursor in the paragraph and click the `<p>` tag selector. Using the CSS view of the Property Inspector you select `<New inline Style>` from the Targeted Rule pop-up menu and then click the Align Center button (shown below).

Using this method, how does Dreamweaver apply the formatting to the paragraph?

- A. `<p align="center">`
- B. `<p style="text-align: center">`
- C. `<p><style="text-align: center">`
- D. `<p>`

Correct answer: B

8.3. Describe the Box model.

You have placed a paragraph `<p>` of text within a `<div>` element that is formatted with a border and background color. You wish to insert a 20-pixel space between the paragraph and the `<div>` border.

What would NOT create this space?

- A. adding a 20-pixel margin to the `<p>` element
- B. adding a 20-pixel margin to the `<div>` element
- C. adding 20-pixels of padding to the `<p>` element
- D. adding 20-pixels of padding to the `<div>` element

Correct answer: B