

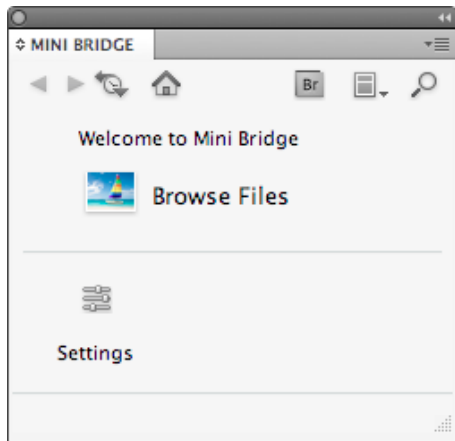
Adobe® InDesign® CS5

How-to guide

Mini Bridge:

A little glimpse into a big world

Adobe Bridge software is a great way to browse through images and files on your computer, but it would be even better if you could use it as a floating panel right inside Adobe InDesign software, right? Now you can—just choose Mini Bridge from the Window menu.



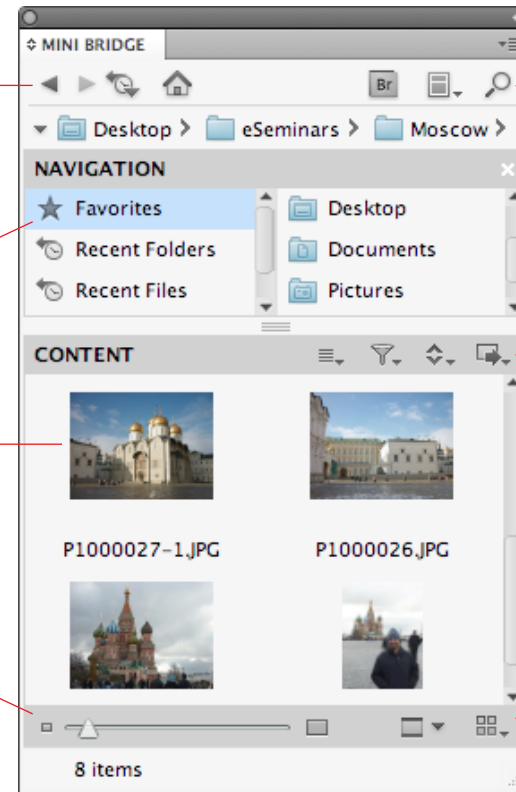
Mini Bridge is a window into Adobe Bridge, which must be running in the background. You can click the Browse Files button in Mini Bridge to launch Adobe Bridge.

Forward, Backward, Favorites, and Home buttons let you navigate Mini Bridge like a browser.

All your Adobe Bridge favorites and collections appear here, too.

Drag and drop one or more images or text files from the Content area to your document page.

Adjust the preview thumbnail size here.



Click the Search button to find images on your computer.

The Select, Filter, Sort, and Tools menus let you manage which files appear in the Content area and what you can do with them.

Mini Bridge can display your files as thumbnails, as a full-screen slide show, or with many other options.