

SERIOUS[™]
MAGIC

OVATION[™]

For PowerPoint®

User Guide



Copyright Notice:

The Ovation software and documentation are © Copyright 2005 Serious Magic, Inc. All Rights Reserved.

This manual may not, in whole or in any part, be copied, photocopied, reproduced, translated or reduced to any electronic medium or machine readable format without prior written consent from Serious Magic, Inc.

Content included as part of the Ovation software, including without limitation, all music, sound effects, images, animations, video effects, 3D objects or font files (“Content”) is licensed to You for Your personal use only and is subject to all the terms and conditions set forth in the Limited Warranty and License Agreement accompanying the Ovation software (“License Agreement”). Please refer to the License Agreement for the terms and conditions.

© Copyright 2002 Bitstream, Inc. Bitstream® Swiss™, Bitstream® Mister Earl™.

Table of Contents

Foreword	1
Introduction	5
Getting Started	7
Installing	7
Quick Start	8
Loading a PowerPoint® Show in Ovation	8
Selecting a PowerLook™	8
Delivering a Show	9
Feature Overview	11
PowerLooks™	11
Deeper	12
The TimeKeeper™	12
PointPrompter™	13
Special Purpose Slides	14
Adding Your Own Graphics to the Look.....	15
The Fundamentals	17
Launching Ovation and Loading a Presentation	18
Selecting a PowerLook for Your Presentation.....	19
Setting the Default Look.....	20
Adding a Look to Favorites	20
Getting More PowerLooks	20
Other Setup Steps	20
Presenting.....	21
Starting the Presentation.....	21

Auto-Advancing Based on Slide Times—The Kiosk Mode	22
Navigating.....	23
Playing Video and Audio Clips	24
Go to Black or White	24
Stopping a Presentation	24
Saving	24
Exporting for Sharing	25
More Help Online	27
Orientation to Ovation's Interface	27
Designing in PowerPoint for the Best Results in Ovation	27
Advanced Features and Options.....	27
Setting Up.....	27
Presenting.....	28
Appendix: Dual Display Setup	29
Connecting the Second Display.....	29
Display Settings.....	30
Setting the Full Screen Output and Ovations Interface to Appear on Monitor 1 or Monitor 2	31
Index	32
Keyboard Shortcuts	36

Foreword

A Brief History of Presentations

Step back in time more than 40,000 years to the banks of a stream in what is now southeastern France. The leader of a tribe of cave dwellers is addressing the chiefs of four neighboring tribes that have been battling each other for generations. Language has not yet fully formed, and he struggles to communicate the revolutionary idea in his mind. It is an idea that could change the entire world as they know it.

Of the scarce few words at his command, there are none for intangibles like peace, coexistence, or shared destiny. In frustration, he draws an arrow from his quiver, kneels, and deliberately traces a series of lines in the sand. The other men watch intently, confusion giving way to cautious nods as the shapes emerge into a map of the surrounding terrain. Then the tip of the spear divides the map with new boundaries. The size of each new region is nearly equal. The natural resources are split almost evenly between them. In silence, each man ponders the shocking idea of voluntarily reshaping his tribe's ancestral territory. Within a few minutes there is agreement. The men look probingly into one another's eyes, and conclude their treaty by slowly nodding in unison. This is not only one of the first such peace councils in the history of humankind but also among the earliest presentations.

Fast forward to April 17, 1492, some 500 miles to the southwest. Christopher Columbus stands before Isabella, Queen of Castile, holding a map showing the continents of Europe and Africa on the right and Asia on the left, with little but ocean between them. When the dashing Genoese navigator finishes, Isabella asks several pointed questions, but the huge potential return on investment is tantalizing. She wastes little time in agreeing to sponsor the mission. Here we witness the green-lighting of arguably the single most momentous expedition ever undertaken. As it happens, this also marks a very early use of a visual aid produced on a printing press, which had been invented only four decades earlier.

Our next step ahead in time covers just 400 years. Thomas Edison is making a pitch to a small group of investors in Manhattan whom he hopes will help fund the construction of a factory to mass-produce light bulbs. They assume that the prototype bulb that glows above Edison's head is his one and only exhibit, so they are surprised when the inventor turns it off and his assistant switches on another light inside a box at the back of the room.

Projected on the wall in front of them is a ghostly image taken along the Mohawk River near Schenectady, New York. The deal that the men draft later that afternoon both secures the future of Edison's great breakthrough and launches a new corporation, General Electric. His presentation, too, is noteworthy for the use of a projected photographic image in a meeting of global consequence.

The technology of projecting images continues to advance rapidly from the Magic Lantern used by Edison. By the 1950s, a quiet yet determined researcher named Jonas Salk is using a primitive mechanical slide projector in his campaign for universal immunization to eradicate polio. The combination of heart-wrenching images of children in steel leg braces and charts illustrating clear results helps him overcome widespread fear of a vaccine made from the very virus that causes the disease. Just a decade later, professors of electrical engineering rely on mass-produced Bell & Howell overhead projectors to teach the fundamentals of integrated circuits to a generation of promising young engineers. These students will go on to develop the chips at the heart of the computer that you use to give PowerPoint presentations, and on which you will soon be using Ovation.

While elements of these vignettes may be more apocryphal than literal, the point remains that every undertaking worthy of note begins as merely an idea — an idea that can only grow into action when it is effectively communicated to others. Whether the goal is to inform, motivate, inspire, or simply share a vision of the future, effectively delivering your message is crucial to your success.

The Future of Presentations

How does the software you now hold in your hands figure into the future of presentations? At Serious Magic, we believe that the evolution of presentations will entail significantly enhanced visuals as well as new tools that help improve a presenter's delivery, so we developed Ovation to offer major new capabilities in these two fundamental areas. It dramatically improves the appearance of your presentation, letting you choose the degree of visual enhancement, from subtly polished to vibrantly dynamic. It also provides tools that help you deliver that presentation more effectively. If you take full advantage of Ovation's presenter tools, they will help ensure that you confidently hit all the points you wanted to cover. They will allow you to drill deeper on issues that interest your audience. And they will help improve your pacing, so that you don't end up having to rush through key material at

the end of the presentation. Combined, Ovation's features can help you enhance the overall impact of your presentations and, in so doing, achieve your objectives.

To us, Ovation is more than just a commercial product. It is also a singular technical achievement, a unique work of art and, ultimately, a labor of love. It began years ago when a talented team was assembled from a range of disciplines to build a new kind of tool. Software architects and engineers crafted a highly optimized graphics engine capable of rendering imagery from the sublime to the spectacular. Artists and designers started with a blank page and envisioned how the visuals for future presentations might look. Then they painstakingly breathed life into those visions by modeling, texturing, and animating pixels and polygons until they became art in motion.

In the end, all that really matters is what Ovation does for you. Our hope is that it makes you more successful by helping you deliver your messages more effectively. After all, more than 30 million presentations are delivered every business day. Now some of those will be Ovation powered. It's an exciting thought. Every time Ovation helps you delight someone with a touch of grace and elegance on the screen, each time an audience senses the extra poise and confidence in your delivery, we'll be cheering you on. If Ovation helps your presentation stand above the rest, if tomorrow's audiences are more captivated than yesterday's, then together we will have succeeded.

— ***The Serious Magic Team***

Introduction

The basic idea behind Ovation is simple. It is a player for PowerPoint shows that “re-imagines” your slides on-the-fly into a more polished and professional presentation. The result is to give you the benefits of hiring a team of expert graphic designers and animators to create a custom presentation for you—without spending thousands of dollars and enduring weeks of delay. While the finished output can range from subtly sophisticated to dynamically dazzling, the process remains easy because you still create your presentations in PowerPoint.

Ovation also introduces several highly effective tools to help you be a better presenter. By using your computer’s dual screen output capability, the program displays the full-screen output to your audience while you’re running the show through Ovation’s interface. Its presentation tools help you stay on time and on point. To aid in keeping on schedule, Ovation has not only a timer that can count up or down but also a TimeKeeper, which shows at a glance whether you’re running too slow, too fast, or just right. To ensure that you cover all your material, the PointPrompter displays your notes for each slide in large, easy-to-read text.



Getting Started

Installing

Insert the Ovation Installation disc into your PC's CD drive and wait for the installer to launch. If the installer does not launch automatically, use Windows Explorer to view the contents of the CD and double-click the Setup.exe file. Follow the instructions in the wizard.

Before installing Ovation, make sure that your computer meets the following requirements:

- Operating System: Windows® XP or 2000
- Processor:
 - Minimum:** Intel® Pentium® 4 / Celeron class 1.6GHz, Pentium® M / Celeron M 1.2GHz, or AMD® Athlon™ 1600
 - Recommended:**
 - Pentium® 4 / Celeron 2.4GHz
 - Pentium® M / Celeron M 1.7GHz
 - AMD® Athlon™ 2400
- RAM: 256 MB (512 MB recommended)
- Graphics Processor:
 - Minimum:** Any nVIDIA® GeForce™, ATI® Radeon®, or Intel® Extreme or better graphics processor with 32 MB of graphics memory
 - Recommended:**
 - ATI® Radeon® 9800 class or better
 - nVIDIA® GeForce® 6600 class or better
 - 64 MB of graphics memory
- CD-ROM drive
- 450 MB available hard drive space
- Microsoft® PowerPoint® 2002 (XP), 2003, or newer (PowerPoint is also part of Microsoft Office™)

If Microsoft PowerPoint® 2002 or newer is not installed, you will not be able to import presentations into Ovation. The installation wizard will alert you if PowerPoint is not present, but you can proceed with installation regardless.

Quick Start

The shortest path to getting a show running in Ovation takes just three steps:

- ❶ Load a PowerPoint presentation into Ovation.
- ❷ Choose a look for the show.
- ❸ Deliver the presentation.

Of course, Ovation has a host of features and options for improving both the look of your presentations and your delivery of them, but everything beyond these three basic steps is entirely optional.

The section titled ***The Fundamentals*** provides complete instructions for these three steps, but we've boiled them down to the essentials here.

Loading a PowerPoint® Show in Ovation

Drag and drop a PowerPoint file (.ppt) onto the Ovation icon on your desktop. If you don't have a slide show handy, use the Ovation Example show that was installed on your desktop. To learn three other ways to load a show, see ***Launching and Loading*** on page 18.

Selecting a PowerLook™

On the Choose Look panel, select a category in the pane on the left, then click a PowerLook in the pane on the right. (If the selected category shows a set of folders instead of PowerLooks, double-click one of the folders to open it.) You can immediately preview the look in the preview monitor on the far right.



notes & tips

Loading a Look may take a moment: *If your computer has an older graphics card, then Ovation will optimize the PowerLook to deliver smoother performance on your machine when you are presenting. Depending on the speed of your computer, this optimization might take up to several minutes.*

Something Amiss? Tweak the Treatment: *Ovation's marvelous graphical feats can change the layout and all aspects of the font treatment for your slides. In performing this makeover, Ovation will determine how far it can go in overhauling each slide. If you*

*don't like the treatment of a given slide, you can override Ovation's enhancements by right-clicking the slide's thumbnail on the Navigation Bar and selecting one or more of the options to revert to the PowerPoint design. You can also make these changes on a show-wide basis through the Ovation Treatment for Show submenu of the Tools Menu. These options are fairly self-explanatory, but you can learn more about them on the **Customizing a Look and Fine-Tuning the Ovation Treatment** page in the **Advanced Features/Setting Up** section of the online help.*

Delivering a Show

To begin presenting, click the **Start** button. If your computer is running with only one screen, then your slides will be shown full screen, hiding the Ovation interface. To switch back to the Ovation window, press the Escape key. To learn about operating in dual-screen mode, please consult **Dual Display Setup** on page 29.

You can navigate from bullet to bullet and slide to slide using the same basic navigation keys as in PowerPoint: SPACEBAR to advance to the next item, left arrow to move back a slide, etc. The **Next** and **Back** buttons on the Present panel step forward and backward through bullets and slides.

To learn more about Presentation Assist features such as Deeper, TimeKeeper, and the PointPrompter, continue reading the **Feature Overview** section.

Feature Overview

Intermission
4:53



PowerLooks™

PowerLooks are exclusive Ovation design packages that give your presentations a distinctive look and feel. They're the graphical ensembles that re-imagine your shows, bringing them to life with dynamic, visually compelling artistic treatments. PowerLooks are conceptually similar to PowerPoint® themes or templates in that PowerLooks define the color, design, and layout of a slide. However, PowerLooks go far beyond standard themes because a PowerLook can do many things that simply aren't possible in PowerPoint, from animating backgrounds, to superimposing dynamic textures across text faces, to adding glows and streaks of light. Ovation comes with scores of PowerLooks, and we're always developing more. They range from subtle and understated to eye-catching, high-impact looks.

There are two ways to assign a PowerLook to a presentation:

- Select one from the library on the Choose Look tab. The left-hand pane allows you to filter which looks are shown in the library.
- Pick an Ovation PowerLook as the template when you're creating the show in PowerPoint. To learn more about working with Ovation looks in PowerPoint, please consult **Selecting a PowerLook** on page 19.

See also in the online help:

- Selecting the Look for your Show (in section titled *The Fundamentals*)
- Applying an Ovation Template within PowerPoint (*Designing in PowerPoint/Slide Design and Revising Slide Content and Updating*)
- Customizing a PowerLook (*Advanced Features/Setting Up*)

Deeper

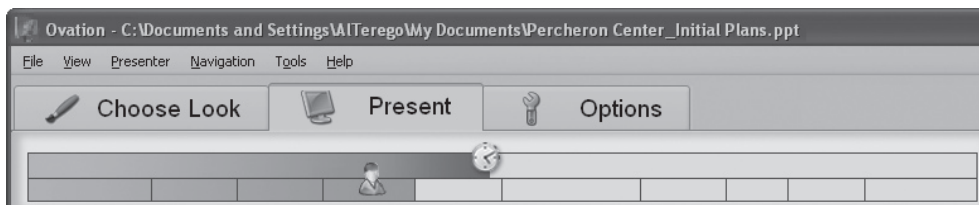
One thing that sets great presenters apart from the pack is that they anticipate questions and prepare slides to illustrate their seemingly “off-the-cuff” answers. Ovation’s Deeper feature puts such supplementary graphics at your fingertips. You can think of going deeper as taking an optional one-step detour from the show’s main slide sequence to content that you assigned to the current slide prior to beginning the presentation. You can assign either another slide from the same show or an image as deeper content. The slide to which deeper content is assigned is called the “parent slide.”

To assign deeper content, right-click the parent slide and select **Add Deeper** from the Popup Menu. Please consult **Assigning Deeper Content** in the **Advanced Features/Setting Up** section of the online help to learn more about creating these links.

To jump to the deeper content, click **Go Deeper** on the Present control panel. (If the button reads “Add Deeper,” then the current slide has no deeper content assigned.) From the deeper content, you can either return to the parent slide or proceed to the next slide in the main sequence using the standard navigation commands. Please consult **Going Deeper** in the **Advanced Features/Presenting** section of the online help for more on how to navigate to and from deeper content.

The TimeKeeper™

Ovation has the almost magical ability to eliminate one major source of presentation-induced stress: the worry that you’re running dreadfully behind schedule or perhaps racing through your material far too fast. The TimeKeeper shows you at a glance how close you are to your desired pace. With this feedback, you can make little adjustments along the way so you don’t end up frantically rushing through your last few slides. It’s like a safety net that lets you stay relaxed, confident, and focused on other aspects of your presentation.



The TimeKeeper, which sits at the top of the Present control panel, has two bars. The top one represents the show's total length, which you set by clicking the TimeKeeper and typing the Target Show Duration in the edit field that opens. When you click **Start**, a clock icon appears and starts moving steadily to the right. The bottom bar shows you which slide you're on. The blocks that it's divided into represent all slides that are enabled. As you advance through the presentation, the current slide is highlighted and adorned with the icon of a person to show you which slide you're on. The relative width of each block represents the time budgeted for that slide. So, for instance, the block for a 4 minute slide will be twice as wide as that for a 2 minute slide.

If you're right on schedule, you'll transition from one slide to the next just as the Progress Bar passes the line separating the two slides on the Current Position Bar. The Progress Bar will turn from blue to red if you start falling behind, indicating at a glance that you need to pick up the pace.

Spending about the same amount of time on each slide is a good general goal, but since material rarely breaks down that evenly, Ovation lets you independently set the time budgeted for each slide. Just click the time or "--:--" on the slide's tab in the Slide Navigation Bar along the bottom of the window. If you've set a target show duration, then Ovation will calculate times for slides that you haven't set times for. When you import a show for the first time, Ovation will apply any slide times that you set in PowerPoint. It can also learn slide timings as you rehearse the presentation or deliver it for real.

PointPrompter™

The PointPrompter is a like a stack of virtual note cards that can operate as a teleprompter just like television newscasters use to speak more confidently. You can use the PointPrompter to show an outline of key points or a verbatim script, and you can move about in it manually using the scrollbar or have it scroll at the speed that you set. Ovation imports notes from PowerPoint if you've entered them in the Notes field, which sits below the slide preview in the Normal and Notes Page views.

To learn more about the PointPrompter, please consult ***Setting Up/Preparing the PointPrompter*** and ***Presenting/Scrolling the Note Card, Rolling the TelePrompter*** in the ***Advanced Features*** section of the online help.

Special Purpose Slides

As a rule, Ovation works with slides that you created in PowerPoint. Like most good rules, however, this one has exceptions. Ovation allows you to add four types of special purpose slides:

- The **Walk-In** and **Walk-Out** slides are like bookends for your presentation—pleasant graphics for your audience to look at as they’re assembling beforehand and dispersing afterwards. You can add a few words of greeting or perhaps a brief message to pique their interest, whet their appetites, and get them thinking. Since these two slides may be shown for an undefined period, they do not have slide times and are not included in the show duration or represented on the TimeKeeper.
- The **Introduction** slide displays the title or topic of the presentation as well as your name and contact information.
- **Intermission** slides not only carry the PowerLook through scheduled breaks but also show how long until you resume.

The screenshot shows the 'Ovation' application window with the 'Options' tab selected. The 'Special Slides' section is active, showing settings for 'Walk-In', 'Walk-Out', 'Intermission', and 'Introduction Slide'.

Slide Type	Heading	Sub-Heading
<input checked="" type="checkbox"/> Walk-In	Hi, y'all	Sit down and rest a spell
<input checked="" type="checkbox"/> Walk-Out	It's been my	pleasure

Intermission

Come on back now, hear?

Clock Mode:

Introduction Slide

☒ Enable

Title	Initial Design for the Percheron Center
Name	Al Terego
Organization	Serious Magic
Email	altereago@seriousmagic.com
Phone	916-985-8000

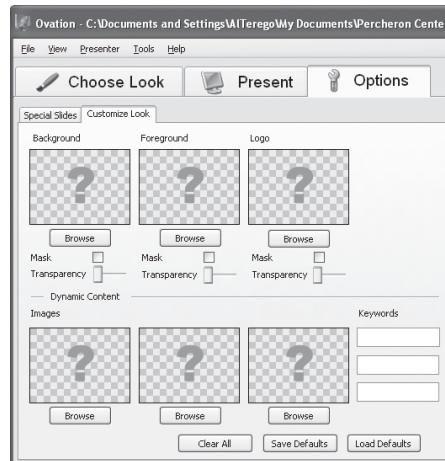
Each PowerLook has variations on its theme to give these bonus slides a unique look.

Adding these slides through Ovation has the advantage that they’re not in the slideshow on the PowerPoint side when you go to print handouts.

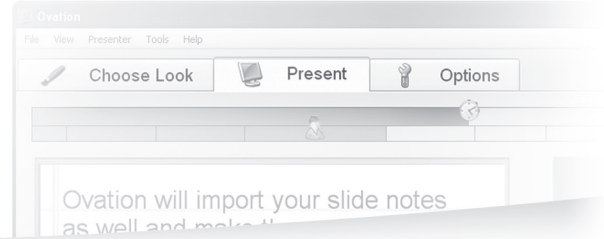
You add these slides and enter their text through their own tab under Options. To learn more about them, please consult **Adding Special Slides** in the **Advanced Features/Setting Up** section of the online help.

Adding Your Own Graphics to the Look

So you're enraptured by Ovation's stunning PowerLooks but want to work your own logo or branding into the mix? Perhaps policy calls for your company logo or university seal to be displayed. Not a problem. On the Customize Look control panel under the Options Tab, you can add your own graphics. Ovation will fold them seamlessly into the PowerLook. You control the transparency to get just the right effect. To learn how each type of image is handled as well as the options that are available, please consult ***Customizing a PowerLook*** in the ***Advanced Features/Setting Up*** section of the online help.



The Fundamentals



This section covers the essential steps necessary to give a PowerPoint® slideshow an Ovation makeover and then to present that show through Ovation. It's as easy as 1, 2, 3:

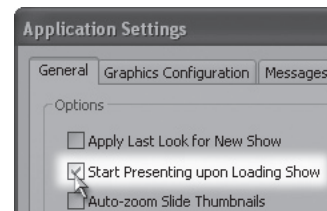
- ❶ Launch Ovation and load a PowerPoint presentation. (Yes, these are two steps, but Ovation gives you a couple of ways to accomplish both with a single action.)
- ❷ Select a Look for your presentation. (Not necessary if you either assigned an Ovation template through PowerPoint or are content with the default theme.)
- ❸ Present the show.



notes & tips

Making it as easy as 1: That's right. You can reduce the three fundamental steps outlined here to just one by enabling the **Start Presenting upon Loading Show** option in the Application Settings Dialog (open with ALT+S). Then when you drag and load a PowerPoint file, all of the following steps will be carried out automatically without so much as a click from you.

- Ovation will launch.
- The show will load.
- If a PowerLook is not yet assigned, then the default Look will be applied.
- The first slide will be shown full-screen.
- If you are set up for dual display, the Present control panel will open.
- The TimeKeeper will start running (if a Target Show Duration was previously set, and if the Walk-In slide is not enabled).



Launching Ovation and Loading a Presentation

You can launch Ovation and load a PowerPoint show in any of the following four ways (the first three accomplish both steps with one action):

- Drag and drop a PowerPoint file (.ppt) onto the Ovation icon on your desktop.
- Right-click the show's filename and select **Open with Ovation** from the popup menu.
- With the show open in PowerPoint, click the **Go to Ovation** button on the toolbar. If this toolbar is not displayed, right-click anywhere on the PowerPoint toolbars and select **Ovation** from the list in the popup menu.
- Launch Ovation by double-clicking its icon on your desktop (or by selecting it from the Start Menu under Programs > Serious Magic Ovation). If this is the first time you've run Ovation, then it will prompt you to browse to a PowerPoint presentation and open it. If you've used Ovation before, you'll see a Select Show dialog, which displays a list of the presentations you've recently opened in Ovation. If the desired presentation is not in the list, click the **Browse** button to find it.

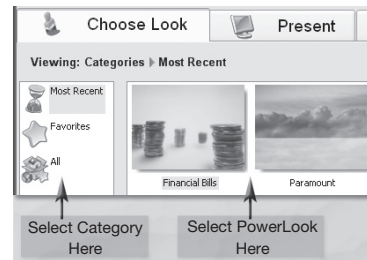
To switch to another show within Ovation, select **Open** in the File Menu and browse to the desired PowerPoint file. If it's a show you've had open recently, you can also select it from the **Recent Shows** submenu of the File Menu.

When Ovation opens a PowerPoint file, it checks whether it has previously loaded the show and, if so, applies all the saved information such as slide times and custom graphics.

Selecting a PowerLook for Your Presentation


Ovation comes with a large library of PowerLooks. The built-in categories make it easy to find one that gives your show a suitable look. You can also assemble a custom list of your favorites. To find and apply a look:

1. Click the **Choose Look** tab.
2. Select the desired category in the pane on the left.
3. If the selected category displays a batch of folders in the Library pane, double-click one of them to open it.
4. Click the icon for the desired look. The preview window will show you the treatment for the current slide. To see how bullets and other elements are animated and highlighted, press the SPACEBAR just as you would when presenting. To preview the look full screen, press the Escape key. Most PowerLooks display various types of content in different ways, so if the presentation has a variety of slide types, be sure to preview a sampling of them before settling on a look.



You can also assign a PowerLook as a design template within PowerPoint. This has several benefits:

- Ovation will automatically apply that look upon importing the show.
- If you know a slide is going to use the original layout, then you have the PowerLook's design to guide you as you arrange the slide's content. By default, presentations with an Ovation design template assigned will automatically use the full PowerLook background for slides that use the original layout. This maintains consistency between the look of reverted slides and those that get the full Ovation treatment.
- Ovation's design templates use the same font as the corresponding PowerLook. The font color is also a close approximation, but in many cases it can't be identical because PowerPoint does not support gradients like those Ovation uses for text treatments. As with the layout, having the typeface and its color the same in PowerPoint as in Ovation improves consistency for slides that are set to use the original typeface or font color.

To find Ovation's templates in PowerPoint, select **Design Templates** on the Slide Design page and click **Browse** at the bottom of the pane, then open the Ovation folder in the Apply Design Template dialog. (If the Design Templates pane isn't open, click the Slide Design button  **Design** on the Formatting toolbar.) Once you've applied any look from this folder, icons for all of them will be folded into the main Design Template bin.

As easy as assigning a look is, it may not even be necessary. That's because your show may already be dressed in the look you want as soon as you import the PowerPoint file. Upon initially loading a show, Ovation automatically assigns a look to it according to the following criteria:

- If an Ovation design template was assigned in PowerPoint, then the corresponding PowerLook will be used.
- If an Ovation look was not assigned within PowerPoint, then the program checks whether the **Apply Last Look for New Shows** option is enabled in the Application Settings Dialog. If it is, then the look from the last show you opened will be used.
- If neither of the above conditions is met, then the default look will be assigned.

Setting the Default Look

Right click the icon for the desired look and select **Set this Look as the Default**.

Adding a Look to Favorites

To add a PowerLook to the Favorites group, either right-click it and select **Add Favorites list** or click and drag it to from the PowerLooks box to the Favorites icon. To remove one from the Favorites group, right-click it and select **Delete from Favorites**.

Getting More PowerLooks

We are constantly developing new PowerLooks for Ovation. To check out what's available, click **See More Looks** on the Choose Look panel.

Other Setup Steps

Beyond selecting a look, there are several other options for setting up and customizing your presentation. For instance, you may want to assign times to individual slides or specify a Target Show Duration. For instructions on all the setup options, please consult the **Advanced Features/Setting Up** section in the online help.

Presenting

Starting the Presentation

To take it from the top, click the **Start** button or press F5. If you're working with dual monitors, this causes several things to happen:

- The first slide will be displayed full screen.
- If you're not already on the Present Tab, then the program switches to that panel.
- The TimeKeeper will start running if either the Target Show Duration is set or all slides have a custom time. If the Walk-In slide is enabled, then the TimeKeeper will not start until you advance to the next slide.
- If the Clock is set to Count Down or Count Up, then it will begin running accordingly. As with the TimeKeeper, if the Walk-In Slide is enabled then the clock will wait until you advance to the next slide.

If you're running with a single display, then all these things will still happen, but by default Ovation displays the full-screen output, so you won't see the program's interface. To toggle between full screen and the interface, press the Escape key.

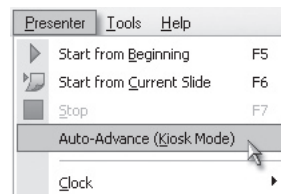
Regardless of whether you have one or two displays, you can keep Ovation from showing the full screen output when you start presenting by disabling the **Show Full Screen while Presenting** option on the Hardware Setup tab of the Application Settings dialog.

You can also start either from the slide that's currently selected on the Slide Navigation Bar by pressing F6 or from any slide by right-clicking it and selecting **Start Presentation from This Slide**. All preceding slides except the Walk-In and Introduction slides will be temporarily disabled and removed from the TimeKeeper.



notes & tips

Cutting to the Chase: Ovation gives you the option of jumping straight into presenting immediately upon loading a show. To enable this option, select the **Start Presenting upon Loading Show** option in the Application Settings dialog (ALT+S). If this option is active, you can of course click Stop at any time. (See also: Appendix: Dual Display Setup)



Auto-Advancing Based on Slide Times—The Kiosk Mode

If times are set for all slides, then you can have Ovation automatically advance through the slides based on those times. With slides that have animation applied, the slide time is divided evenly among the animation steps. All navigation options remain functional when a presentation is running in this mode.

To run a presentation in this way, which is known as the “kiosk mode,” select Auto-Advance in the Presenter Menu. Ovation will enter the presenting mode just as if you had clicked Start, the only difference being that slides will advance automatically.

By default, a presentation that’s running in the kiosk mode will loop endlessly until you stop it. To set Ovation to play shows only once, disable the Loop Continuously in Kiosk Mode option on the General Tab of the Application Settings dialog.

Navigating

Ovation allows the following navigational steps. Note that if you're running the presentation with a single monitor in the full-screen mode, then you'll naturally have to use the keyboard shortcuts since the Ovation interface will not be visible.

Action	By Mouse	By Keyboard	What Happens
Next Element	Next button	Spacebar	Advances to the next element.
Back in History	Back button	Backspace	If you advanced normally to your current position, then this backtracks element by element. If you've jumped around, then Back retraces those steps. If you're on Deeper content, then this action returns to the parent slide.
Next Revealed Element		CTRL+Down Arrow	If the slide has animated content and two or more elements are revealed, then these actions move the focus to the next or previous element, pausing video or audio that is playing.
Previous Revealed Element		CTRL+Up Arrow	
Next Slide		CTRL+Right Arrow	Advances to the next enabled slide in the show.
Previous Slide		CTRL+Left Arrow	Goes back to the previous enabled slide in the show.
Show All Elements		CTRL+A	If the current slide contains animation steps, this reveals all of them at once.
Show Deeper Content	Go Deeper button	D	If the current slide has Deeper Content assigned, it gets displayed.
Random Slide Access	Click any slide thumbnail on Navigation Bar	Type the slide's number	This allows you to deviate from the main slide sequence. You can even display a disabled slide in this manner.

Playing Video and Audio Clips

If an audio or video clip is linked to a slide, it will begin playing automatically upon advancing to the slide or the animation step within the slide to which it is linked.

Advancing to the previous or next animation step or slide stops and resets the clip.

On a slide with at least two animation steps revealed, you can pause the clip without resetting it by moving the focus to the previous or next element, which you do by pressing CTRL+Up Arrow or CTRL+Down Arrow.

If a clip was set to loop in PowerPoint, then it will loop in Ovation until you take an action to stop it.

If you switch to another program while a clip is playing, the audio will continue playing. The video, however, will pause along with the dynamic background.

Go to Black or White

To switch to a black screen, press “B” on your keyboard. To switch to a white screen, press the “W.”

To return to displaying the current slide, press the same key again.

Stopping a Presentation

When Ovation is in the presentation mode, the **Start** button becomes the **Stop** button. Clicking it or pressing F7 terminates the full screen output, resets the TimeKeeper, and returns the clock to displaying the time of day.

To hide the full-screen display temporarily without resetting the show, press Escape.

Saving

Ovation automatically saves the settings for each presentation. This avoids the need to save Ovation’s show settings manually.

Exporting for Sharing

To make an Ovation slide show available for copying or sending to another system, click Export in the File Menu. This opens a standard Save As dialog through which you can specify the name of the exported file and the path to which it will be saved.

The resulting file, which has an extension of “.ovn,” is a self-contained presentation that you can load on any system that has Ovation or the Ovation Player installed. If the presentation contains any linked audio or video clips, be sure to copy the files for those clips along with the exported show and put them all in the same folder.

On the second system, you can make any changes you like within Ovation (slide times, special purpose slides, etc.). However, you will not be able to access or revise the original PowerPoint file from the exported version in fact, PowerPoint does not even have to be installed on the second system. If it's necessary to edit the slide content, you can either do so on the originating computer and re-export the presentation or copy the PowerPoint file to the second machine, import it into Ovation, and redo any customization.

On the second system, load the exported presentation file by any of the standard methods:

- Drag and drop it on Ovation's desktop icon.
- Right-click the filename and select Open with Ovation.
- Launch Ovation and browse to the exported presentation file.

If revisions to the file cannot be saved, then Ovation will prompt you to set a path where it can save changes. If you opt not to set a new path, then any changes you make to the presentation within Ovation will not be saved. Assuming the exported file is writable, you can copy it to another computer without re-exporting it.

More Help Online



This printed manual is a digest of the online help that focuses on the most essential tasks. The online help includes the following additional content. It is also updated periodically and included in free updates of the software.

Orientation to Ovation's Interface

This sizable section breaks the entire program down control panel by control panel, dialog by dialog, and menu by menu, defining all controls and options and providing links to the relevant instructions.

Designing in PowerPoint for the Best Results in Ovation

- Slide Design: Templates, Layout, and Font Treatment
- Slide Content
- Animation and Slide Transitions
- Revising Slides in PowerPoint and Updating Shows in Ovation
- Conditions that Cause a Slide to Revert to the PowerPoint Layout
- File Management

Advanced Features and Options

Setting Up

- Adjusting Ovation's Performance to Your Hardware Resources
- Setting Display Options
- Customizing a PowerLook & Fine-Tuning the Treatment
- Disabling and Enabling Slides
- Adding Special Purpose Slides: Walk-In, Title, Intermission, and Walk Out

- Assigning Deeper Content
- Setting Time per Slide and Target Show Duration
- Preparing the PointPrompter

Presenting

- Scrolling the Note Card, Rolling the Teleprompter
- Going Deeper
- Printing a Presentation

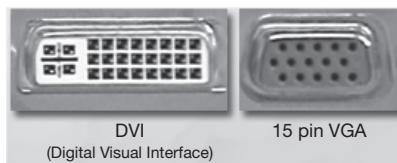
Appendix: Dual Display Setup

To get the most out of Ovation, you'll want to operate with two displays — your screen with the Ovation interface displayed for just you to see, the other display showing the full screen output for your audience to view. That way you'll have all the advantages of the Presenter Panel to aid you.

Setting things up for dual display involves connecting your computer and the secondary display device, configuring Windows display properties for two monitors, and telling Ovation what to show on each monitor. Though only the last of these tasks involves Ovation directly, we'll provide a few pointers here that may save you searching for instructions elsewhere.

Connecting the Second Display

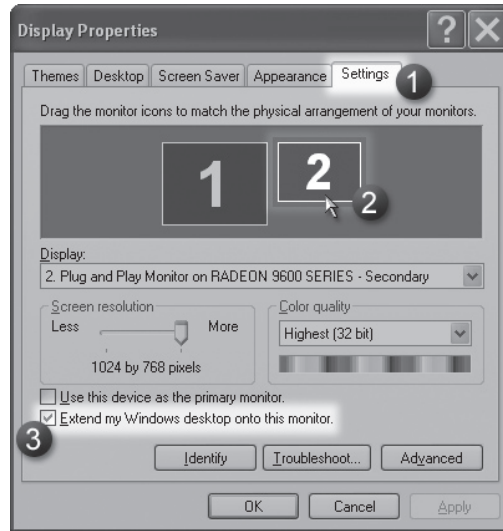
Physically connecting an external monitor or presentation projector is quite simple and typically just requires a standard VGA cable. Some graphics cards displays have additional connection options such as S-Video that you can use if both devices have the same type of port.



Display Settings

Once you have the second display device connected, Windows needs to know what you want to do with it.

- ❶ Select the Settings Tab in the Display Properties dialog, which you can open through the Start Menu > Settings > Control Panel. You'll also find a link to this dialog on the Hardware Settings tab of Ovation's Application Settings dialog.
- ❷ Click the icon for Display Device #2.
- ❸ Click the check box for the **Extend my Windows desktop onto this Monitor** option.

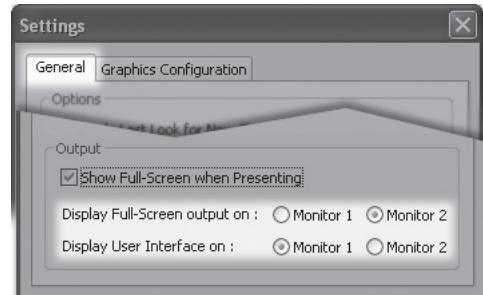


Do a test run with a show in Ovation to make sure the program's interface and the full-screen output are on the appropriate displays. If anything's awry, then return to the Settings Tab of the Display Properties dialog, click the Advanced button, and return all driver settings to the defaults. Pay particular attention to settings involving multiple display devices. The precise organization of the Advanced Properties dialog and the names for various settings vary from one make of graphics card to another. In general, modes with words like "Twin" and "Clone" are not what you want with Ovation. With nVIDIA® cards, the Dual view setting is a good choice.

Setting the Full Screen Output and Ovation's Interface to Appear on Monitor 1 or Monitor 2

When you're operating with two monitors (or a monitor and a projector), Ovation's interface is on Monitor 1 by default while the presentation appears full-screen on Monitor 2. You can switch these assignments independently on General tab of the Application Settings dialog.

To switch the full screen display on and off, press the Escape key.



Index

A

Adding a Look to Favorites	20
Adding Your Own Graphics	15
Add Deeper	12
Advance	23
Auto-Advancing	22

B

Back	23
Black slide	24

C

Connecting the Second Display	29
-------------------------------------	----

D

Deeper	11
Default PowerLook	20
Design Templates	19
Dual Display Setup	29

E

Exporting	25
-----------------	----

F

Full Screen Output	31
--------------------------	----

G

Getting More PowerLooks	20
Getting Started	5
Go Deeper	12
Graphics Card	7

I

Installing	7
Intermission slide	14
Introduction slide	14

K

Kiosk Mode	22
------------------	----

L

Launching Ovation	18
Loading a PowerPoint Presentation ..	18

N

Navigating	22
Next	23

O

Ovation template	20
------------------------	----

P

PointPrompter	13
PowerLooks	11, 19
PowerPoint	7
Presenting	21

Q

Quick Start	8
-------------------	---

R

Requirements	7
--------------------	---

S

Saving.....	24
Screen Refresh Rate for	
Full Screen Display.....	30
Scrolling the Note Card	13
Selecting a PowerLook	8, 19
Sharing for Presenting	
on another Computer.....	25
Slide Navigation Bar.....	21
Special Purpose Slides	14
Starting the Presentation.....	21
Start Presenting upon Loading Show	17
Stopping a Presentation.....	24

T

Target Show Duration	13
TimeKeeper	12

W

Walk-In and Walk-Out slides	14
White slide	24

The Ultimate Video Toolkit

ULTRA 2

ULTRA 2 transforms DV, HDV and HD keying into a practical daily production tool for all types of video professionals. Its drag-and-drop simplicity allows video editors to create highly realistic background composites that are convincing in every detail, even from marginal video sources.

Additionally, ULTRA 2 puts high-end virtual sets within reach. Master Sets Libraries (sold separately) go beyond typical static shots and include breathtaking flying camera shots, moving stages, boom and dolly moves. Sets include multiple B-source options and camera angles in tight, medium and wide views. These libraries can be used seamlessly in ULTRA 2.

Professional keying and virtual set software for broadcasters and video professionals.

**Download the free ULTRA 2 Trial Version
at SeriousMagic.com**



DV RACK

DV Rack is the first product that can prevent video disasters, let you shoot faster and help you get visibly better quality from your existing camera. It's powerful software that runs on a PC or laptop connected to your DV camera. DV Rack puts ten essential production tools at your fingertips letting you instantly preview, record, review, and evaluate your shots.

It's simply revolutionary.

The biggest revolution in shooting
since DV itself.

**Download the free DV Rack Trial Version
at SeriousMagic.com**



Visual Communicator™ 2

Video Presentations in Half the Time

Serious Magic's award-winning Visual Communicator software makes it easy to create professional-looking video presentations for education and corporate videos. Visual Communicator is based on a creation process that produces everything in real time and includes an integrated teleprompter that's perfect for narrating your video clips and graphics. Total creation time is typically less than 20 minutes and finished clips can be output immediately in DV and even streamed live over the Internet.

Visual Communicator includes everything you'd expect from expensive broadcast tools, including effortless real-time chroma key, virtual sets with reflections, and real-time 3D digital video effects with highlights and soft shadows. Even if you have a room full of sophisticated AV equipment, there's nothing that compares to Visual Communicator's time-saving benefits. Use it as a standalone tool or import clips directly into your editing software, such as Vegas, Avid or Premiere, to get professional results faster and easier than you ever thought possible.



Create video presentations in minutes for business, education and personal productivity.

Download the free Visual Communicator Trial Version at SeriousMagic.com

Vlog It!™

Add video to your blog in seconds! Vlog It is faster and easier than video software because there's no editing required. Use photos, video clips, or record live from a webcam or camcorder into your PC. It even includes a newscaster-style teleprompter for narration. Simply drag and drop to add pictures, video and sound clips from your cell phone, digital camera or camcorder. You also get a TV-quality library of graphics and titles to help your videos look sensational. It works seamlessly with all top blogging sites, just drop the video icon into any existing blog. The impact is not only memorable, it's inspirational.

Download the free Vlog It Trial Version at SeriousMagic.com





Keyboard Shortcuts

File / Presentation Commands

- Open: CTRL+O
- Update from PowerPoint: CTRL+U
- Exit: CTRL+Q

View

- Output on Full Screen: ESC

Presenter/Navigation

- Start from beginning: F5
- Start from Current Slide: F6
- Stop: F7
- Next: Space, N, Enter, Page Down, Right Arrow, Down Arrow
- Back: Backspace, P, Page Up, Left Arrow, Up Arrow
- Previous Revealed Element: CTRL+Up Arrow
- Next Revealed Element: CTRL+Down Arrow
- Next Slide: CTRL+Right Arrow
- Previous Slide: CTRL+Left Arrow
- Jump to Specific Slide: Type slide's number
- Show All Bullets: CTRL+A
- Go Deeper: D
- Black Slide: B
- White Slide: W

Miscellaneous

- Application Settings: Alt+S
- Help: F1
- Start Teleprompter: F9
- Pause Teleprompter: F10