



PHOTOSHOP.COM
MOBILE Beta

User Guide

345 Park Avenue, San Jose, CA 95110-2704 USA

www.adobe.com

Adobe, the Adobe logo, and Photoshop are either registered trademarks or trademarks of Adobe Systems Incorporated in the United States and/or other countries. Windows is a registered trademark of Microsoft Corporation in the United States and/or other countries. All other trademarks are the property of their respective owners.

© 2008 Adobe Systems Incorporated. All rights reserved.

Table of Contents

- Photoshop.com Mobile User Guide [
- Table of Contents..... [[[
- Welcome 1
 - What you can do..... 1
 - What you need..... 1
- Getting started..... 3
 - First-time sign-in..... 3
 - Main screen..... 4
 - Navigation and general options..... 4
- Phone Photos..... 5
 - View phone photos 5
 - Upload and share photos on Photoshop.com 7
- My Library 9
- My Albums 10
- Support..... 10

Welcome

Welcome to the Adobe® Photoshop.com Mobile user guide (for beta use). This document explains how to use Photoshop.com Mobile to browse the photos on your phone. It also covers how to upload them to your account on the Photoshop.com website and share them with friends. Plus, you can learn how to view all the photos you've stored in your online Photoshop.com Library from your phone.

What you can do

You can use Photoshop.com Mobile to:

- Upload photos from your phone to your online library on Photoshop.com and share them publicly, if you want.
- View your entire online library of photos from your phone.
- Browse your photo albums on Photoshop.com and change their status from public to private and back again, at any time.
- View the photos you've stored on your phone as either thumbnail views or as full-screen images.
- Delete the photos stored on your phone that you don't want to keep or that you've already uploaded.

What you need

Get started with just a supported Windows® Mobile handset, an account on Photoshop.com, and Photoshop.com Mobile software installed on your phone. Each is described in the following paragraphs.

Supported Windows Mobile phone

For the Photoshop.com Mobile beta, you can use any of the phones listed on the online supported device link at <http://mobile.photoshop.com>.

Important note: Uploading and viewing photos on your phone can consume a large amount of data. We recommend that you enroll in an unlimited data plan to avoid unexpected high charges from your network carrier.

Photoshop.com account

Create and sign in once to your Photoshop.com account, and then you can upload photos from your phone. To set up a free account, go to <http://mobile.photoshop.com>. Photoshop.com is a great place to store, edit, and share all your photos. With your account, you can easily upload the photos you take with

your phone. And you can share them publicly. From Photoshop.com, you can also share your photos on third-party communities, including Facebook, Flickr, Photobucket, and Picasa.


Photoshop.com Mobile installation

To use the Photoshop.com Mobile beta software, install it on your phone. It's quick, easy, and free. First check that your network connection has full signal strength, so that you can download the software.

1. Go to <http://mobile.photoshop.com> on your computer and sign in with your user name and password (or click Join Now! to become a member).
2. Follow the instructions, selecting a phone model and entering your mobile telephone number.
3. Within a few seconds after you submit this information, you receive an SMS message on your phone. Highlight the URL included in the message and then select the center soft key to go to the site.
4. Select Yes, when you see the message asking you to download the software (~1.5 MB).
5. After you've downloaded the software, you'll see the installation screen. Be sure that either Device or Memory Card is selected as the location. Select Install and follow the instructions on the screen.

Instead of starting from the mobile.photoshop.com page, you have a couple of alternatives for installing the software:


- Use the browser on your supported Windows Mobile phone to go to <http://m.photoshop.com> and download the software.
- Go to <http://mobile.photoshop.com> on your computer and click the Download To My PC link after you sign in. Then use Microsoft ActiveSync or the Mobile Device Center to install the software on your phone. For more information, see your Microsoft documentation.

Once you've installed Photoshop.com Mobile, it's time to start enjoying it! Look for the Photoshop.com Mobile  icon in the Start menu on your phone.

Visit the [Adobe Photoshop.com Support Center](#) to help you resolve issues with the installation process. Get more information about Photoshop.com Mobile and have your questions answered through online FAQs and Adobe Online Forums.

Getting started

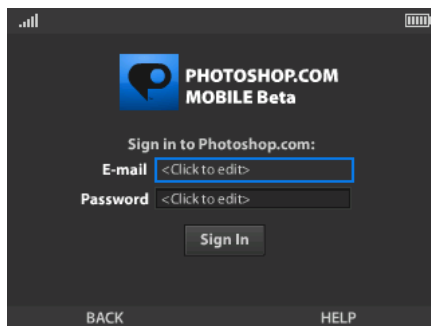
After you've created your Photoshop.com account and installed the software on your phone, you're set to go.

Start the software by selecting the Photoshop.com Mobile  icon on the Start menu of your phone.

First-time sign-in

The first time you use Photoshop.com Mobile, you see a couple of introductory screens before you see the sign-in screen.

Note: You can select Skip on the introductory screen to bypass the sign-in. Skip sign-in if you just want to familiarize yourself with the software and look at the photos you've stored on your phone.



1. On this screen, the E-mail field is highlighted. Press the center soft key to display the text editor for the phone.
2. Type the e-mail address you entered when you set up your Photoshop.com account. Then press the center soft key. You see the sign-in screen again, with the Password field selected.
3. Press the center soft key to display the editor again.
4. Type the password for your Photoshop.com account and press the center soft key.
5. On the sign-in screen, press the center soft key again.

A confirmation message indicating that the sign-in was successful displays briefly, before you see the main Photoshop.com Mobile screen.

A successful sign-in means that you're connected to your account on the Photoshop.com website. Photoshop.com Mobile stores your sign-in information. You won't enter it again unless you want to exit Photoshop.com Mobile and sign in to another account.

If you have problems signing in, check your Photoshop.com account login information and make sure that you have network coverage.

Note: Whenever you change your online sign-in ID or password, you need to sign in to Photoshop.com Mobile again using your new information.

Main screen

When you sign in to Photoshop.com Mobile, you see the main screen. From now on, the main screen is the first screen you see whenever you use Photoshop.com Mobile.



From the main screen, you can scroll to select one of the three main features of Photoshop.com Mobile:

- **Phone Photos.** You can see the number of photos you currently have stored on your phone, including the photos on any storage card you have installed. Press the center soft key to see the photos.
- **My Library.** Press the center soft key to see all the photos you have stored in your Photoshop.com account.
- **My Albums.** Press the center soft key to see all the online albums you have stored in your Photoshop.com account.

Navigation and general options

Once you navigate away from the main screen, you can always return to it by pressing the Back soft key one or more times.

When you're viewing photos, you can use the navigation keys to scroll through the photos one at a time.

On most screens, you can select the Options menu in the lower-right corner of the screen, using the right soft key. Although some options are specific to the feature you're using, the following are general options available from most screens:

Settings

From the Options menu, select Settings to display the Settings screen. You can check here to see if you're signed in to your Photoshop.com account. To sign out from your account, select Sign Out, and press Done. You might want to sign out of your account so that you can sign in to a different account.

You also change your Auto Upload options on the Settings screen. These options are described with the Phone Photos feature in this user guide.

Help

From the Options menu, select Help to view a list of frequently asked questions and their answers. For additional help, visit [Adobe Photoshop.com Support Center](https://helpx.adobe.com/photocollab/using/ps-collab-mobile.html) from your computer.

Check for upgrade

From the Options menu, select Check For Upgrade to see if you have the latest version of Photoshop.com Mobile.

Exit

From the Options menu, select Exit to exit Photoshop.com Mobile and return to the main screen of your phone. If you have Auto Upload enabled, Photoshop.com Mobile continues to run in the background and uploads photos to the Photoshop.com site as you capture them.

Refresh view

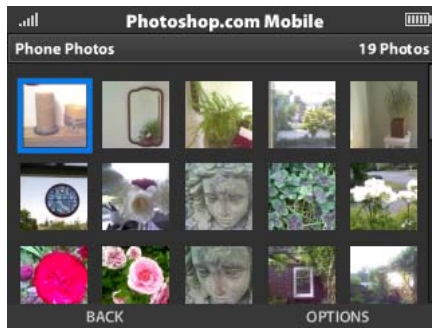
From the Options menu on some screens, select Refresh View if the online content you are viewing is out of date or out of sync.

Phone Photos

On the main screen, select Phone Photos to view the photos stored on your phone and to upload photos to your private library on Photoshop.com.

View phone photos

When you select Phone Photos on the main screen, you see the photos stored on your phone. Photoshop.com Mobile arranges photos by capture date, with the latest capture displayed first. You can scroll to see all the photos.



If you've previously uploaded photos to your library on Photoshop.com, you'll see a blue check mark in the lower-right corner of those photos.

Deleting photos from your phone

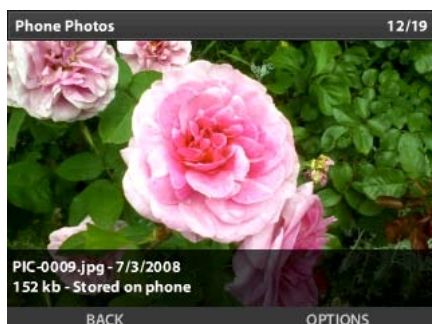
You can delete a photo from your phone if you decide you don't want it or if you want to make room to take more photos. When you're out of storage space on your phone, you get a warning message. If you've previously uploaded a photo, that copy remains in your private library on Photoshop.com even after you've deleted it from your phone. (You can't delete photos from your Photoshop.com Library from Photoshop.com Mobile.)

To delete a photo from your phone:

1. Using the navigation key to move forward and backward through the thumbnails, select the photo you want to delete.
2. With the photo selected, press Options, and then press Delete From Phone. You are asked to confirm the delete.

Full-screen view

To see a full-screen view of a photo, select it in thumbnail view, and then press the center soft key.



Below the photo, you can see details, including the photo name, capture date, size, and storage location. To hide this information, select the Options menu, and then select View Full Screen. Press the center soft key to display the information again.

Upload and share photos on Photoshop.com

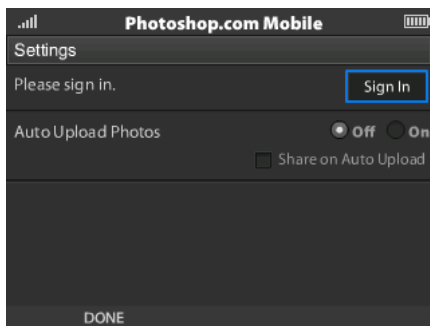
You can upload photos from your phone to your private library on Photoshop.com either automatically, as you take them, or manually, whenever you want. Uploads take place in the background, so you can still use your phone during the upload process. Your phone must be connected to the Internet, and you must be signed in to Photoshop.com to upload photos. Because uploading photos can use up a lot of data, we recommend an unlimited data plan.

Note: If you are a Photoshop® Elements 7 user, you can upload mobile photos to the online organizer as part of your Photoshop.com membership. They automatically sync with your desktop organizer so you can view, edit, and share photos no matter where you are.

Auto upload and share

You can choose to have your photos automatically uploaded whenever you take a photo by enabling the Auto Upload feature, which is turned off by default.

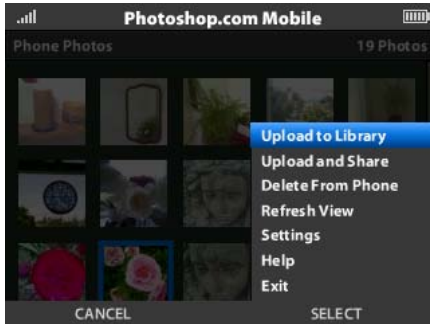
1. From the Options menu, select Settings.
2. Select On as your Auto Upload Photos option. Your photos are uploaded to your Photoshop.com account as soon as you take them, as long as you're logged in to your Photoshop.com account.
3. Select Share On Auto Upload to make the automatically uploaded photos public by default. Then all your friends can view them on your Photoshop.com site.
4. Select Done to save the settings you've chosen (the settings revert to the defaults when you sign out of Photoshop.com Mobile).



Manual upload and share

From the thumbnail view or the full-screen view of the photos on your phone, you can select individual photos to upload to your Photoshop.com Library.

- With a photo selected in either thumbnail or full-screen view, select Options. Then select either Upload To Library or Upload And Share, which places the photo in a default public Mobile Shared album on Photoshop.com.



While one photo is being uploaded, you can queue additional photos for uploading. A circle in the lower-right corner of the photo indicates the upload status of the photo:

- A dark green arrow indicates that the photo is waiting to be uploaded.



- A green arrow indicates that the photo is uploading. You can cancel an upload at this time by selecting Cancel Upload from the Options menu.



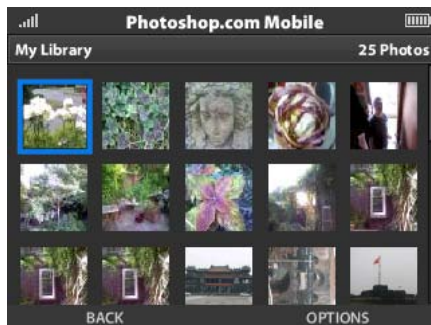
- A blue check mark indicates that the photo has been successfully uploaded. Remember that the photo has not been deleted from the phone. You can edit the uploaded photo without changing the local copy.



My Library

Use the My Library feature to browse your entire library of photos. You must be signed in to your Photoshop.com account to use this feature.

Select My Library on the Photoshop.com Mobile main screen to see a thumbnail view of the photos in your Photoshop.com Library.



From this view, you can:

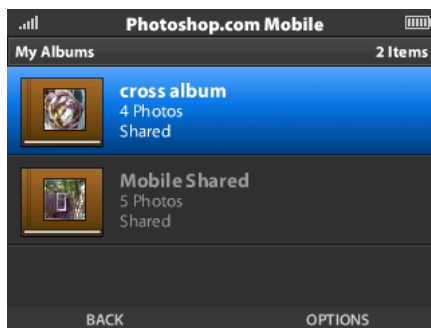
- Scroll through the photos in the library using the navigation keys. Additional rows of photos are displayed as you scroll. You may experience periodic temporary delays as Photoshop.com Mobile downloads the next set of photos for viewing.
- Highlight a photo, and then press the center soft key to see a full-screen view of the photo and its details. Press Back to return to thumbnail view, or press the center soft key again for full-screen view without the details. From this view, press the center soft key to return to the full-screen view with details, or press the left soft key to return to thumbnail view.

My Albums

Log in to Photoshop.com before using this feature. Then select My Albums on the main screen to see the albums or album groups (indicated by a folder icon) you have stored on Photoshop.com. The initial view indicates whether the album is shared or private, as well as how many photos are in the album.

If you've previously uploaded photos and marked them for sharing from your phone, you'll notice that they've been placed in your Photoshop.com Library. They are also in the Mobile Shared public album, which was automatically created for you in your Photoshop.com account.

Note: Albums that you've marked as Private, but available to friends, in your Photoshop.com Library are treated as private on your phone.



In Photoshop.com Mobile, you can:

- Select an album to view the photos included in it.
- Share a private album by selecting Options and then selecting Share Album. Shared albums appear with check marks on your My Photos page on Photoshop.com. They are added to your My Gallery page and are available for everyone to browse.
- Stop sharing a shared album by selecting Options and then selecting Stop Sharing Album.

Support

Please visit the [Adobe Photoshop.com Support Center](#) to get additional questions answered through online FAQs and Adobe Online Forums. And send your [feedback](#) to us so we can make the next version of Photoshop.com Mobile even better.