

Adobe Premiere Elements 1.0

Full-featured slide shows

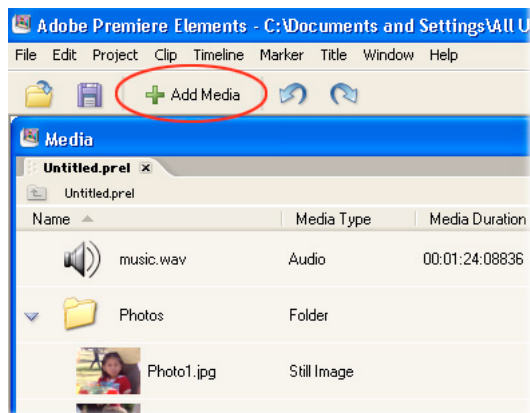
Add excitement to your image presentations. With Adobe® Premiere® Elements, you can do much more than show one image after another. Add a sound track—and match the slides to the beat. Then, take advantage of the easy-to-use pan and zoom presets in Adobe Premiere Elements to achieve professional results in a fraction of the time it would take in other applications. Slide shows never looked so good.



1. Import the images and audio clips you want to include.

In Adobe Premiere Elements, click Add Media in the task bar. Then navigate to the images and audio files you want to include. Press the Ctrl key as you click filenames to select multiple files, and then click Open. If all your images are in a single folder, select the folder and click Add Folder.

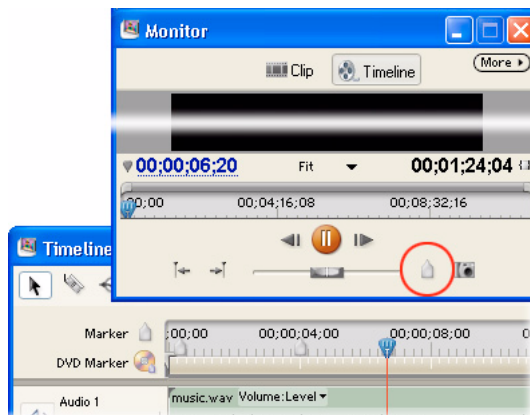
Adobe Premiere Elements adds the files or folders you import to the Media window. (To view the contents of a folder, click the triangle next to it.)



2. Mark slide locations.

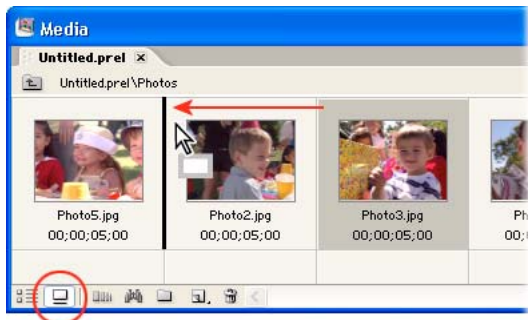
Drag the audio clip to the first audio track in the Timeline window. Click the Timeline button at the top of the Monitor window. Then, click the Play button in the Monitor window, and whenever you want a new slide to appear, click the Set Unnumbered Timeline Marker button in the Monitor window.

When you create a slide show, Adobe Premiere Elements places slides in the timeline to correspond with unnumbered timeline markers.



3. Arrange the images in the Media window.

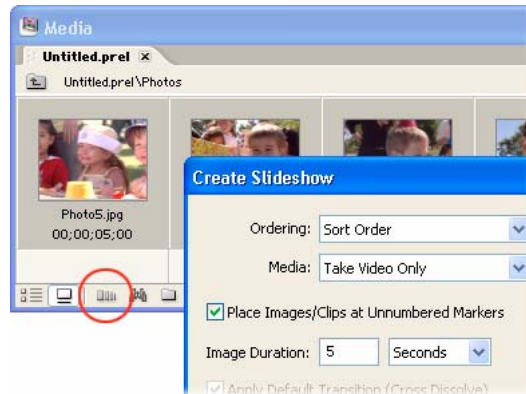
If you're working with a folder of images in the Media window, double-click it to see the images it contains. Click the Icon button at the bottom of the Media window. Now, drag the images in the Media window into the order in which you want them to appear in the slide show.



4. Create the slide show.

Select the images you want to include in the slide show, and click the Create Slideshow button at the bottom of the Media window. Then, in the Create Slideshow dialog box, choose Sort Order from the Ordering pop-up menu, and select Place Images/Clips At Unnumbered Markers. Click OK. Adobe Premiere Elements adds your images to the timeline, placing them at the markers. To preview the slide show so far, play it in the Monitor window.

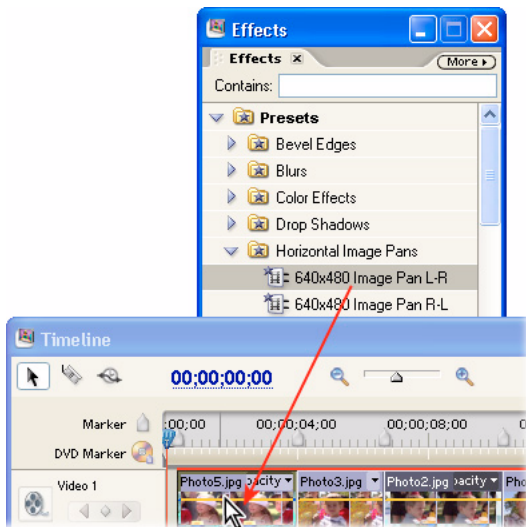
Adobe Premiere Elements automatically applies the default transition effect to all the images when it creates a slide show. If you want to use a different transition effect, change the default before you create the slide show. To change the default, right-click the transition effect you want to use in the Effects window, and choose Set Selected as Default Transition from the context menu.



5. Apply pan and zoom effects to clips.

Click Effects in the task bar to open the Effects workspace. Expand the Presets folder, and then expand the Horizontal Image Pans, Horizontal Image Zooms, Vertical Image Pans, or Vertical Image Zooms folder, depending on the effect you want to use. Drag a preset onto the image clip in the Timeline window. You may want to experiment with different pan and zoom options to get the effect you want.

By default, a preset applies evenly to an entire clip—in the case of a slide show, it applies the full time that the image is displayed. However, if you want to modify how the preset is applied, you can add keyframes in the Effect Controls window. For more information about animating effects, see “Change effects settings over time” in the How To palette. (Choose Window > How To to open the palette, and then choose Effects from the pop-up menu.)



From the Creative Experts at Adobe. Copyright 2004.
Adobe Systems.



Adobe, the Adobe logo, and Premiere Elements are either registered trademarks or trademarks of Adobe Systems Incorporated in the United States and/or other countries. Windows is either a registered trademark or trademark of Microsoft Corporation in the United States and/or other countries.

©2004 Adobe Systems Incorporated. All rights reserved.