

Sanvito® Pro

Release Notes

Introduction

Sanvito is an upright script typeface designed by Robert Slimbach in 1993, and revised and extended for OpenType in 2002. Named after one of the principal scribes of the Italian Renaissance, Sanvito is based on the highly practical book hands of the Renaissance humanists. It was designed to combine the spontaneity and liveliness of calligraphic writing with the clarity and practicality of a more formal typeface. Sanvito's optical size variants allow larger point sizes to maintain a delicate appearance, while smaller sizes have sufficient heft and openness to maintain legibility. Sanvito can be used for display settings and for informal purposes such as correspondence, flyers, and letterheads.

OpenType®

OpenType “.otf” fonts are compact single-file cross-platform fonts, which can have extended language support based on Unicode, and enhanced typographic layout features. For OpenType information, including the OpenType User Guide, the OpenType Readme (application compatibility notes), and OpenType Specimen Book PDFs, visit Adobe's Web site at <http://www.adobe.com/type/opentype>.

About optical sizes

Typefaces with optical size variants have had their designs subtly adjusted for use at specific point size ranges. This capability reintroduces one of the features of hand-cut metal type, which uses a separate font for each point size and is often optically adjusted. This is an advantage over the current common practice of scaling a single digital type design to different point sizes, which may reduce legibility at smaller sizes or sacrifice subtlety at larger sizes.

The objective of optical sizing is to maintain the integrity and legibility of the underlying typeface design throughout a range of point sizes. The adjustments typically made to the design to optimize it for different sizes are: for larger point sizes, the space between characters (letter fit) tightens, the space within characters (counterforms) closes up (i.e., the letters are slightly more condensed), the serifs become finer and the stroke contrast becomes greater, the overall weight becomes lighter, and the x-height gradually diminishes; for smaller point sizes, opposite adjustments are made.

Smaller optical sizes are also useful when output resolution is very limited, such as for on-screen display. One might choose to use a smaller optical size design for creating text on buttons for a Web page, for example.

These adjustments can improve the legibility of intermediate point sizes further if there is a greater change in design at smaller sizes than at larger sizes. For example, the difference in design between the Caption and Regular optical sizes, which may have a difference in size of only 4 points, is almost as much as the difference between the regular and display sizes, which have a difference of 10-60 points.

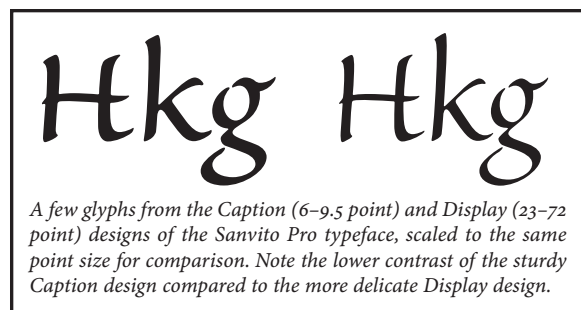
Although any of the fonts may be used at any size, the intended point sizes for the optical designs of this family are:

Caption: 6–9.5 point

Regular: 9.6–15.0 point

Subhead: 15.1–22.9 point

Display: 23+ point



OpenType layout feature highlights:

The most prominent OpenType layout features in these fonts are: oldstyle figures, fractions, superscript, inferiors (subscript), and “all alternates.” Note that the choice of which OpenType features are supported is specific to each application.

For a full showing of all the glyphs available in this font, see the Glyph Complement PDF, available online at <http://www.adobe.com/type> (from there, go to the page for this specific font package).

Style links & font menus

The weight links in this family are: Light to Semibold and Regular to Bold.

In many Windows® applications, instead of every font appearing on the menu, italic styles and the bold weight are accessible only by use of the italic and bold style buttons. For example, you could have all four weights of Sanvito Pro installed, but in your font menu you might see only the Light and Regular; the Semibold and Bold weights would be accessed by selecting the Light or Regular and using the bold style button.

On the Mac OS, although each font appears as a separate entry on the font menu, users may also select fonts by means of style links. Selecting the “base weight” and then using the style links (as described above for Windows) enhances cross-platform document compatibility with many applications, such as Microsoft® Word and Adobe PageMaker®, although it is unnecessary with more sophisticated Adobe applications such as recent versions of Illustrator®, Photoshop® or InDesign®. One should not, however, select a style-linked “bold” from the menu (such as the Semibold or Bold for Sanvito Pro), and then additionally use the bold styling button; doing so will either have no effect, or result in “faked” further bolding, which will usually produce inferior screen and print results. (The same is also true for italics; never select an italic font and then apply an italic style.)

Package-specific compatibility notes

For general OpenType compatibility and usage notes, see the OpenType Readme. The latest version can be found on the Adobe Web site at <http://www.adobe.com/type/opentype>.

Language coverage

ISO-Adobe and Adobe CE (Central European).

ISO-Adobe language coverage includes Afrikaans, Breton, Danish, Dutch, English, Finnish, French, Gaelic, German, Icelandic, Indonesian, Irish, Italian, Norwegian, Portuguese, Sami, Spanish, Swahili and Swedish. Adobe CE language coverage includes Croatian, Czech, Estonian, Hungarian, Latvian, Lithuanian, Polish, Romanian, Slovak, Slovenian and Turkish.

Windows code pages supported

Latin 1: WinANSI (code page 1252)

Latin 2: Eastern Europe (1250)

Turkish (1254)

Windows Baltic (1257)

Mac OS language support

On Mac OS 8–9, with applications using OS-level language support, only the MacRoman encoding is supported. Support for the following additional Mac language groups exists in the font, and may be available in some Adobe applications, or in Unicode-supporting applications under Mac OS X:

- Central European

 - (includes Czech, Hungarian, Slovak, Slovenian, Polish, Latvian, Lithuanian and Estonian)

- Romanian

- Croatian

- Icelandic & Faroese

- Turkish



© 2002 Adobe Systems Incorporated. All rights reserved. Adobe, the Adobe logo, Illustrator, InDesign, PageMaker, Photoshop and Sanvito are either registered trademarks or trademarks of Adobe Systems Incorporated in the United States and/or other countries. OpenType and Windows are either registered trademarks or trademarks of Microsoft Corporation in the United States and/or other countries. Mac is a trademark of Apple Computer, Inc., registered in the United States and other countries. (2002/03/28)