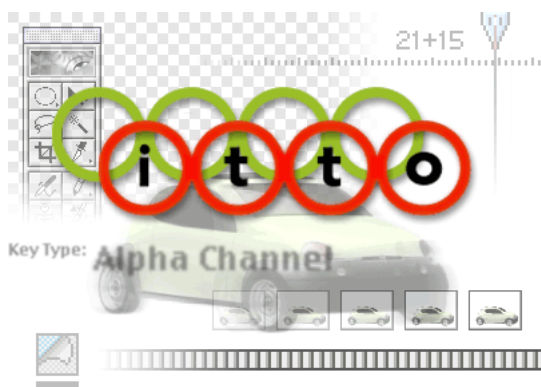


Adobe Premiere 6.0

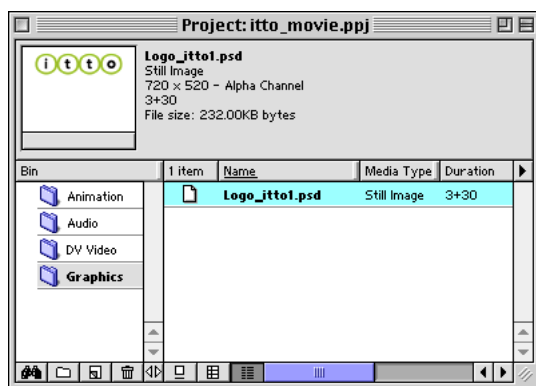
Editing Photoshop files in Premiere using Edit Original

Using files from other Adobe products in Adobe Premiere just got a whole lot easier. You can now import images from Photoshop, Illustrator, or After Effects and quickly open them for editing using the Edit Original command. Follow along to see how easy it is to edit your imported images and have Premiere automatically update them in your project.



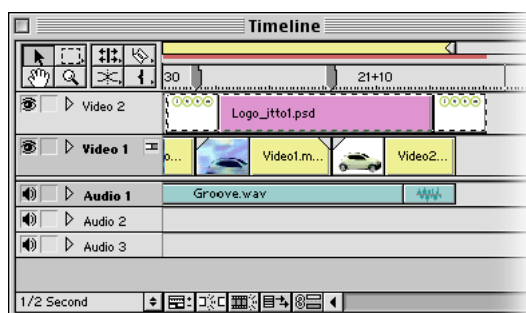
1. Import a Photoshop file into Premiere.

Start or open a project in Adobe Premiere, and then import a Photoshop (.psd) file by choosing File > Import > File. You can import the file as a merged file or import a single layer.



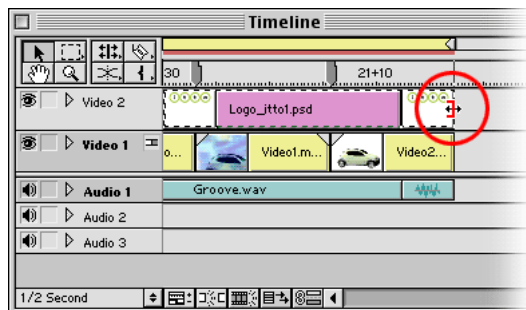
2. Add the Photoshop clip to the Timeline.

Drag the Photoshop clip from the Project window to a superimpose track on the Timeline window, arranging it where you want it to appear in your sequence of clips.



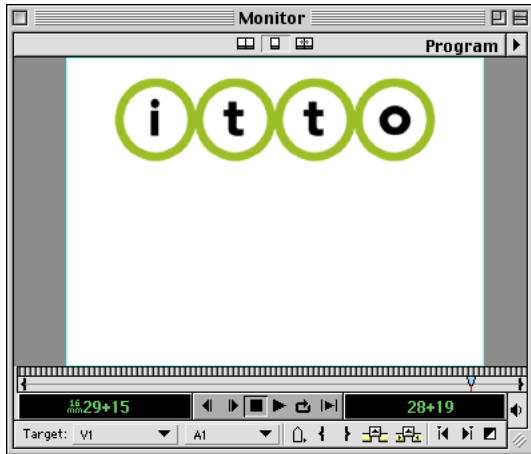
3. Adjust the duration of the clip.

Position the cursor on one end of the clip and drag to increase or decrease its duration. You can also double-click the clip, click the Duration button in the window that appears, and type a specific duration.



4. Preview the clip in the Monitor window.

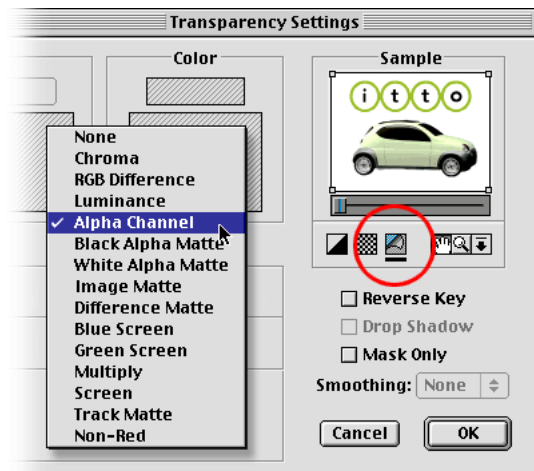
In the Timeline window, position the yellow work area bar over the Photoshop clip. Press Enter to build a preview of the project so far, (you can also hold down Alt (Windows) or Option (Mac OS), and scrub the time ruler in the Timeline window. Notice that the clip obscures all other clips below it in the Timeline. To resolve this, apply a transparency key.



5. Apply transparency.

Select the clip in the Timeline and choose Clip > Video Options > Transparency. From the Key type menu, choose Alpha Channel. If your clip does not contain an alpha channel, try using the Chroma key and then sampling the background color with the eyedropper tool that appears.

To see the results of the transparency, click the page peel icon under the preview thumbnail. Click OK to close the dialog box.



6. Preview the clip in the Monitor window.

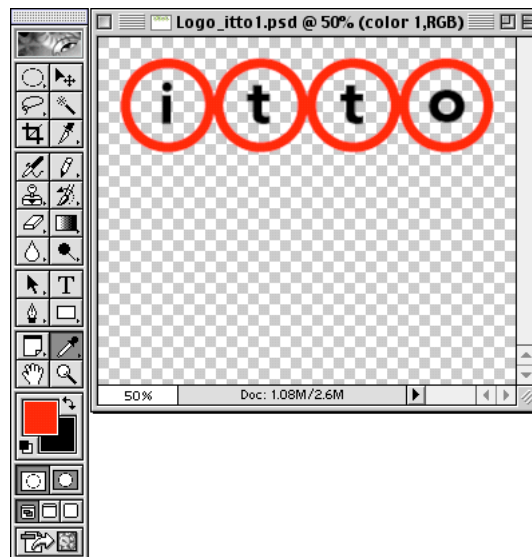
Press Enter to build a preview and view the Photoshop clip superimposed over the other clips in your project.



7. Make adjustments to the Photoshop file.

Select the Photoshop clip in the Timeline and choose Edit > Edit Original. When Adobe Photoshop opens, edit the file as necessary. You can change any aspect of the file that you want. We changed the color of the circles around the "itto" logo.

When you've made your edits, choose File > Save.



8. Preview the edited file in Premiere.

Premiere is still open in the background, so bring it to the front and view the changes to the Photoshop file. Press Enter again to build a preview using the newly edited Photoshop clip. If necessary, use the Edit Original command again until the file suits your needs.

You can also use the Edit Original command with clips imported from Adobe After Effects 6.0 and Illustrator 8.0 or higher.

