

ColdFusion Enterprise

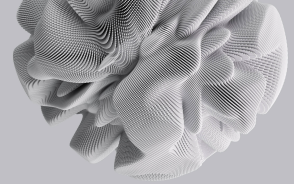
ColdFusion Standard

AI Capabilities

Seamless AI Model Integration	•	•
Intelligent Document Processing	•	•
Trusted Retrieval Augmented Generation (RAG)	•	•
MCP-Based AI Connectivity	•	•
Native Vector Database Support	•	•

Server Manager and Monitor

Web-based Server Administration	•	•
Administrator API	•	•



ColdFusion Enterprise

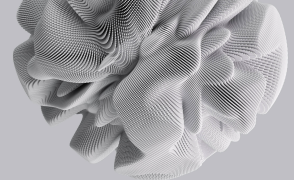
ColdFusion Standard

Cloud Services (AWS, Azure, GCP)

Cloud Storage Services	•	•
NoSQL Database Support	•	•
Messaging Service	•	•
Relational Database Services	•	•
AWS Lambda	•	•
Email Service	•	•

Performance Monitoring Toolset

Automatic Connector Tuning	•	
Server Monitor	•	•
Database Monitor	•	•
External Services Monitor	•	
Code Profiler	•	

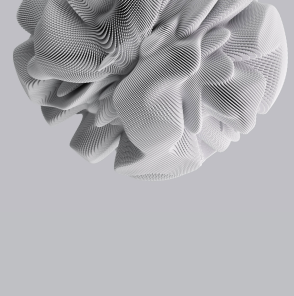


ColdFusion Enterprise (2025 Release)

ColdFusion Standard (2025 Release)

API Manager

Threat Protection	●	
Policy Management	●	
Multitenancy Support	●	
API Monitoring	●	
API Version and Lifecycle Management	●	
API Access Control	●	
API Rate Limiting and Throttling	●	
API Developer Portal	●	
SOAP Gateway	●	
External Storage for Session Scope	●	
API Caching	●	
Enterprise API Management	●	
SOAP to REST Translation	●	

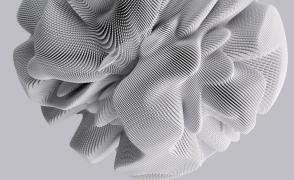


ColdFusion Enterprise (2025 Release)

ColdFusion Standard (2025 Release)

Application Development

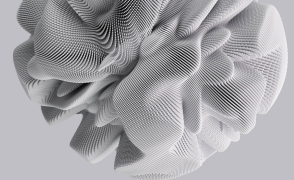
GraphQL Client	●	●
Lightweight Installer	Enhanced	Enhanced
Modularization	●	●
Single Sign-on	●	●
CF Setup	●	●
Asynchronous Programming	●	
Full CFSCRIPT Support	●	●
REPL Support	●	●
Compiled Application Deployment (Sourceless)	●	●
Code Profiler	●	
Distributed Cache	●	
Command Line Interface	●	●
Member Functions	●	●
Query Execute and Elvis Operator	●	●
Social Login Support & Social Plug-in Integration	●	●
Custom Serializer and De-serializer for JSON and XML	●	●



ColdFusion Enterprise (2025 Release)

ColdFusion Standard (2025 Release)

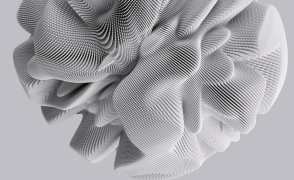
	ColdFusion Enterprise (2025 Release)	ColdFusion Standard (2025 Release)
Multisite RESTful Web Services	●	
Object-Relational Mapping (ORM)	●	●
ORM Text Search	●	
Advanced Caching (ehcache)	●	●
Ajax UI Component	●	●
Ajax Framework	●	●
Image Manipulation	●	●
RSS and Atom Feed Creation & Consumption	●	●
ZIP and JAR Archive File Manipulation	●	●
Database Introspection	●	●
Custom Server-side Chart Styles	●	●
Server-side Charting and Graphing	●	●
ColdFusion Components (CFCs)	●	●
XML Support	●	●
XPath Support	●	●
Web Services (SOAP)	Enhanced	●
Built-in Support for REST	●	●



ColdFusion Enterprise (2025 Release)

ColdFusion Standard (2025 Release)

	ColdFusion Enterprise (2025 Release)	ColdFusion Standard (2025 Release)
File Manipulation	●	Restricted functionality*
.NET Assembly Support (DLL)	●	●
Java, Servlet, and EJB Connectivity	●	●
JDBC and ODBC	●	●
FTP and SFTP Servers	●	●
Virtual File Systems (RAM)	●	●
Virtual File Systems (ZIP, JAR, FTP, SFTP)	●	●
Multi-threaded CFML (CFTHREAD) *	●	●
Database Client Connection Management	●	●
Support for Additional Database Types	●	●
Database Exception Handling	●	●
Failover Support for Database	●	●
Revamped Scheduler Engine	●	●
Grouping of Scheduled Tasks	●	●
Misfire and Exception Handling of Scheduled Tasks	●	
Scheduled Task Priority	●	●
Listeners for Scheduled Tasks	●	



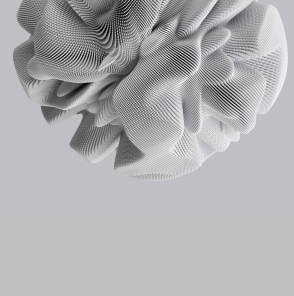
ColdFusion Enterprise (2025 Release)

ColdFusion Standard (2025 Release)

Cluster Support For Scheduled Tasks	●	
Chaining of Scheduled Tasks	●	
Application-specific Scheduled Tasks	●	
Support for Closures	●	●
CFC Auto Constructor	●	●
CFC Method Chaining	●	●
For-in Support for Queries and Lists	●	●
Hotfix Installer	●	●
Instant Notification for Updates in ColdFusion Administrator	●	●

Advanced Protocol Support

Gateway Architecture	●	Restricted functionality*
Enterprise IM gateways (Sametime and XMPP)	●	Restricted functionality*
Asynchronous CFML Gateway	●	Restricted functionality*
SMS Gateway	●	Restricted functionality*
JMS Gateway	●	Restricted functionality*
TCP/IP Socket Gateway	●	Restricted functionality*
Directory Watcher Gateway	●	Restricted functionality*

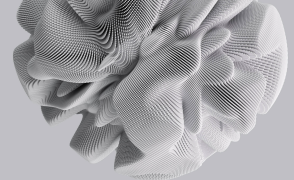


ColdFusion Enterprise (2025 Release)

ColdFusion Standard (2025 Release)

Document Services

PDF File Generation from HTML	●	Restricted functionality*
PDF Digital Signatures	●	
PDF Archiving	●	●
Full PDF DDX Support	●	
PDF Redaction	●	●
PDF Sanitization	●	●
Exchange Comments Across Files	●	●
Standardized PDF Metadata	●	●
PDF Attachments	●	●
PDF Stamp Support	●	●
Cluster Support for HTML to PDF Conversion	●	
PDF Form Processing	●	Restricted functionality*
PDF Document Manipulation	●	Restricted functionality*
Server-side Printing	●	Restricted functionality*
Online Presentation Generation	●	Restricted functionality*
Structured Reporting	●	Restricted functionality*
MS Office Excel Support	●	Restricted functionality*



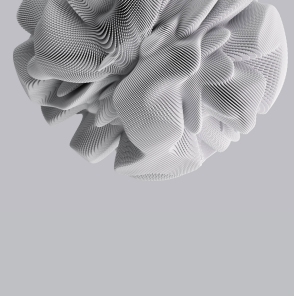
ColdFusion Enterprise (2025 Release)

ColdFusion Standard (2025 Release)

Microsoft Office PowerPoint File Generation	●	Restricted functionality*
PDF File Conversion from Microsoft Office Word & PowerPoint	●	Restricted functionality*

Enterprise Infrastructure

Central Configuration Server	●	●
64-bit Support	●	●
Administrative User and Role Management	●	
Request Limit Management	●	
Operating System Virtualization Support **	●	
High-scalability Email Engine	●	
Web-based Multi-instance Manager	●	
Web-based Cluster Manager	●	
JEE Package Deployment (EAR/WAR)	●	
Multiple Server Instances	●	
Instance Clustering	●	
Enterprise Database Drivers	●	
Port80 Support for HTML5 WebSockets	●	●
ColdFusion Archiving & Deployment (CAR)	●	●



ColdFusion Enterprise (2025 Release)

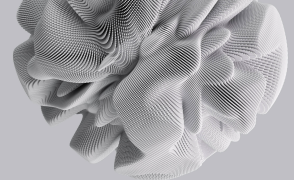
ColdFusion Standard (2025 Release)

HTML5

Cluster Support for HTML5 WebSockets	●	●
Port80 Support for HTML5 WebSockets	●	●
SSLv3 Support for HTML WebSockets	●	●
HTML5 Charts	●	●
Support for Events and JavaScript Interface for HTML5 Videoplayer	●	●
Geo-location Capability with CFMAP	●	●
Support for HTML5 Input Types	●	●
Support for WebSocket Protocol on Server	●	●
Interface for Publish & Subscribe Using WebSocket	●	Restricted functionality*
Custom Styles for HTML5 Charts	●	●

Integrated Solutions

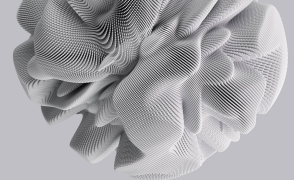
Cluster Support for HTML5 WebSockets	●	
Embedded Apache Solr full-text Search Engine	●	
Support for Dynamic Custom Fields for Solr	●	●



ColdFusion Enterprise (2025 Release)

ColdFusion Standard (2025 Release)

Data Import Handler for Solr	•	
Adobe LiveCycle Data Services ES Integration	•	•
Flash remoting	•	•
User-defined Functions	•	•
Microsoft SharePoint Web Parts	•	•
Microsoft SharePoint Single Sign-on	•	•
Java Portal Integration (JSR-168, JSR-286, WSRP)	•	•
Email Servers (POP and IMAP)	•	•
Support for Microsoft Exchange 2019	•	•
Microsoft Exchange Server Integration	•	•
Directory Servers (Active Directory and LDAP)	•	•
Apache Tomcat Integration	•	•
Bidirectional Java Integration	•	•
Java Classes Loaded from Custom Paths	•	•
Java Dynamic Proxies from CFCs	•	•
Ability to Invoke CFCs from Java Classes	•	•
Integration with VS Code	•	•



ColdFusion Enterprise (2025 Release)

ColdFusion Standard (2025 Release)

Security

LDAP and SAML Integration	●	●
JWT Integration in CF	●	●
Single Sign-on	●	●
Auto Lockdown	●	●
Windows NT Domain Authentication	●	●
RSA FIPS 140-compliant Strong Cryptology	●	
Security Sandboxing	●	●
Built-in Functions to Protect against XSS and CSRF	●	●
Login Mechanism	●	●
Security Code Analyzer	●	●
Session Cookie Management	●	●

*Restricted functionality: Features are throttled to allow only one shared simultaneous request.