

Press Contacts

Summer Shi
Adobe
(86) 10 58657703
sshi@adobe.com

Ann Wai / Rosa Yip
Newell Public Relations
(852) 2117 5017 / 2117 5011
annw@newell.com / rosay@newell.com

FOR IMMEDIATE RELEASE

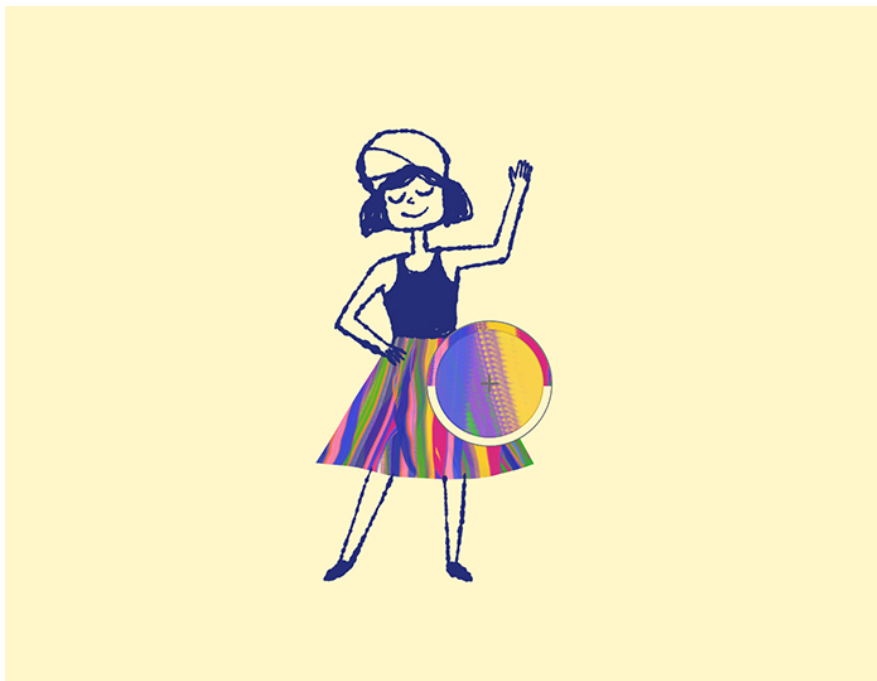
Adobe Freshens up Fresco App with New Color Selections and Brush Sets

New features and improvements include Eyedropper adaptation, Capture Shapes, Vector Trim, Mixer brushes, a ruler and more ways to activate the Touch Shortcut

Hong Kong — May 22, 2020 — Adobe (Nasdaq: ADBE) has announced new features for [Adobe Fresco](#), its drawing and painting app released last September. As the most feature-filled release, the new version gives artists, illustrators, and designers the tools they need to create professional works that can be easily exported as final files, or quickly polished in [Adobe Photoshop](#).

A colorful addition to color selection

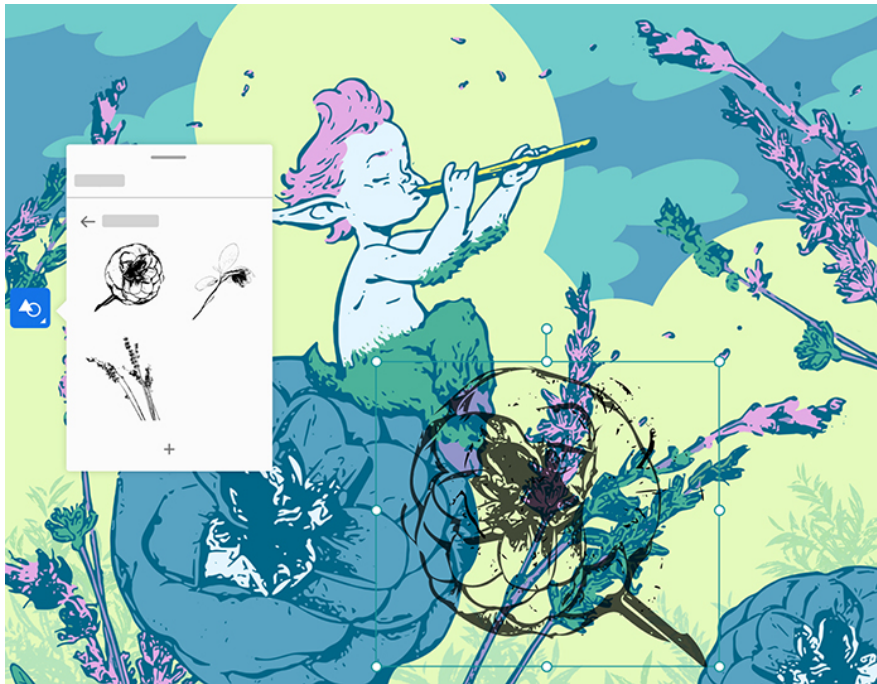
Among the updates, Fresco's Eyedropper adaptation enables the simultaneous sampling of multiple colors. From the sampling, a swatch drop will be recorded into the recent color history, and that swatch can be used with Fresco's live brushes and most Pixel brushes.



Art by Kyle T. Webster.

Things are shaping up

Capture Shapes, the feature which has been easily missed in [Adobe Illustrator Draw](#), is in Fresco now. Users can now create beautiful vector or raster designs by capturing inspiring shapes on mobile devices and access them from the Shapes tool. Also in Fresco now are basic shapes.



Art by Kyle T. Webster.

If only cleanup was always so easy

Vector Trim, a set of trim tools in Fresco, makes it easy to cut or completely remove vector strokes that cross or connect or intersect. Users can erase a stroke entirely with just three simple swipes.



Art by Kyle T. Webster.

A new brush set

Twelve new Mixer brushes are added to Fresco's default brush set. For supporting them, Photoshop's Mixer brushes will work in Fresco too. Users can watch the colors pick up, mix, and combine like paint on canvas.



Art by Elissa Welsh.

A new name, an even better tool

Straight edge came with the ability to paint perfectly straight, parallel, intersecting, perpendicular, or diagonal lines. Now renamed as a ruler, it pins to the canvas and displays the pixel-length of a stroke as it's made when drawing against the canvas.



Art by Jessica Wong.

Two states are better than one

Right now, a secondary state for the Touch Shortcut is the way to access Vector Trim, but there's so much more on the way. To activate the Touch Shortcut's secondary state, tap hold and drag the center to its outer edge. To lock it in a secondary state, double-tap it and once it's locked, tap it again. To release the lock, double-tap.

Fresco has persistence settings: App and brush settings will still be there when you sign back in when sharing a device with others. There is also better blending with Oil Live brushes, a new Watercolor Live brush, and a Velocity Taper brush that responds to the speed of a stroke. New keyboard shortcuts are also added, so is [support for more Windows devices](#), with some fixed bugs and improved performance.

Take a look at the [Fresco Gallery](#) and [Fresco Streaming Gallery](#) on Behance to see what people are drawing in Fresco.

To learn more about the new features of Fresco, please visit [here](#).

About Adobe

Adobe is changing the world through digital experiences. For more information, visit www.adobe.com/hk_en/.

###

© 2020 Adobe Inc. All rights reserved. Adobe, and the Adobe logo are either registered trademarks or trademarks of Adobe in the United States and/or other countries. All other trademarks are the property of their respective owners.