



Adobe Connect



Good bye Flash, Hello HTML



Adobe Flash reached its end-of-life on **December 31, 2020.**

The following information will help ensure a seamless Flash-to-HTML transition for Adobe Connect customers.

Transition of Adobe Connect to a modern Flash- free architecture

New



HTML browser client

For Presenters & Participants to host or join Adobe Connect rooms via any modern browser

[Try now](#)

New



Native desktop application for Windows

Eliminating the need for Flash plug-ins in Adobe Connect rooms.

[Download now](#)

New

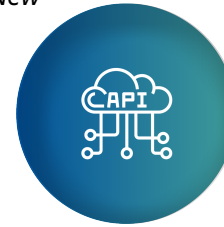


Native desktop application for Mac

Eliminating the need for Flash plug-ins in Adobe Connect rooms.

[Download now](#)

New

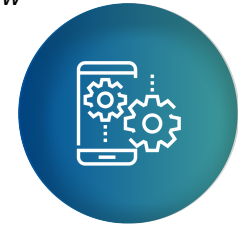


HTML SDK 2020, V11

SDK and Web-services API available to build HTML-based custom apps & integrations

[Download now](#)

New



New Native Mobile apps

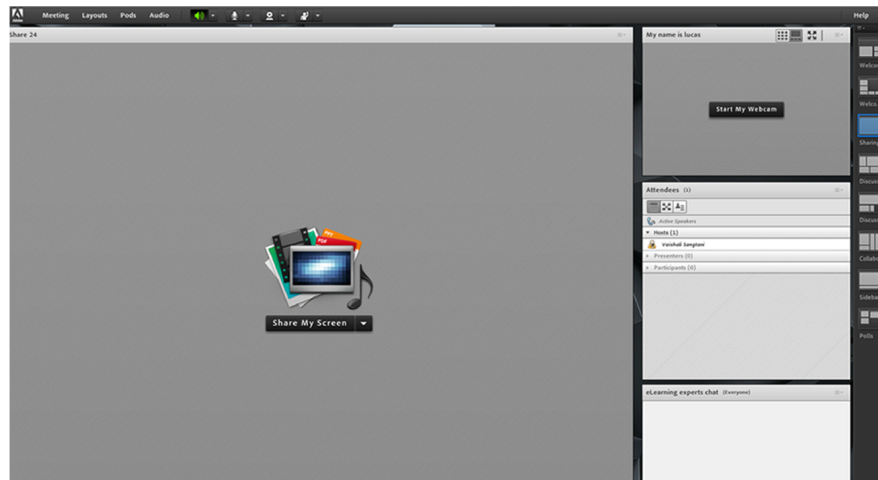
For Presenters & Participants to host or join Adobe Connect rooms via any mobile device

[Download now](#)

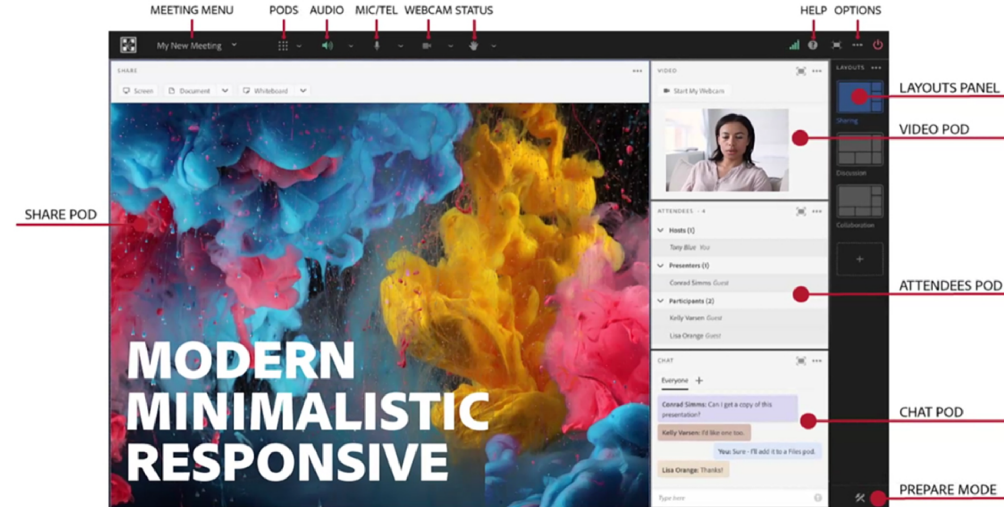
Since December 2020, users can no longer join Adobe Connect rooms using old Flash-based browsers, such as IE11. To assist our customers in transitioning from Flash to HTML, Adobe Connect will continue interim support for old Flash-based Classic View in its native desktop applications for few more months.

However, we strongly recommend, that in order to experience the best of Adobe Connect features & enhancements, customers migrate their content, rooms & users to the new HTML-based Standard View at the earliest.

Classic View



Standard View^{New}



What do you need to know about the old Classic View as a Host?

If you are currently on Adobe Connect Version 11.2 or higher, all your rooms are set to the new Standard View by default.

However, as host you have an option to disable it and fall back to Classic View in native desktop applications, if at all, you need to use old Flash content (swf, flv, f4v), flash based custom pods or PPTs. Your choice of Standard or Classic view as a host will be applicable for all participants in the room. This support for Classic View in the native desktop applications is only for the interim and will soon be disabled.

What do you need to know about the old Classic View as a participant?

If you are using the latest version of Adobe Connect desktop or mobile applications or joining using a modern HTML browser, you should have a seamless experience. You may be prompted to update application or join from a browser; in case you are not using the latest version.

Why Standard view?

- Recommended for most users
- Newer, modern interface
- Faster
- More accessible
- Available with the desktop application or via a modern browser (if enabled)

Application and browser interface settings

☒ Standard view (Recommended)

All attendees can either join from a modern browser in HTML Client, from the new desktop applications or from the current mobile apps. Users joining from classic desktop applications will be shown an appropriate message to either join from a modern browser or update their application.

☒ Enable browser access

☐ Use Enhanced audio*

Use this option to use enhanced audio (Opus codec).

* Users will not be able to join from mobile apps.

* Make Offline (mp4) recordings will not be possible.

☐ Classic view (The option to use classic view will be removed soon)

Use this option If some of the users are on 32-bit systems and need to share their desktop screen. Note: This will force all attendees to join from Flash client in browser or from the classic desktop application.

Should I use Enhanced Audio?

- Excellent sound quality
- Works with Standard view either via desktop applications or a web browser
- Works with online recordings
- No significant change in bandwidth
- Does not currently work with
 - Current mobile apps
 - Offline (MP4) recording process
- Enhanced audio is off by default

Should I enable browser access?

- HTML client includes virtually all functionality except screensharing. Available for hosts, presenters, and participants
- Limitations in displaying video
- Recommended for 1:many sessions (i.e., webinars)
- On by default

Why Classic view?

- Supports 32-bit Windows OS
- Supports legacy custom pods and Flash content

Application and browser interface settings

☐ Standard view (Recommended)

All attendees can either join from a modern browser in HTML Client, from the new desktop applications or from the current mobile apps. Users joining from classic desktop applications will be shown an appropriate message to either join from a modern browser or update their application.

☒ Enable browser access

☐ Use Enhanced audio*

Use this option to use enhanced audio (Opus codec).

* Users will not be able to join from mobile apps.


* Make Offline (mp4) recordings will not be possible.

☒ Classic view (The option to use classic view will be removed soon)

Use this option If some of the users are on 32-bit systems and need to share their desktop screen. Note: This will force all attendees to join from Flash client in browser or from the classic desktop application.

Note: Support for Classic view in native desktop applications will soon be disabled.

For Administrators - Compliance and Control Settings

 **Adobe Connect**

Help ▾ | Logout: **Vaishali Sangtani**

Home | Content | Training | Meetings | Seminars | Event Management | Reports | Administration | My Profile

Title & Description Search...

Account | Users and Groups | Audio Providers | Customization | Service Plan | Compliance and Control | Administration Dashboard

Pods Management | Share Settings | Recordings and Notice | Training Settings | Engagement Tracking | HTML Client Settings | Advanced Settings

Application and browser interface settings

☒ Force standard view (Recommended)

Use this to force Standard view across all rooms of this account. All attendees can either join from a modern browser in HTML Client or from the new desktop applications. Users can also join from the current mobile apps. Users joining from classic desktop applications will be shown an appropriate message to either join from a modern browser or update their application.

☒ Use Enhanced audio*

Use this option to use enhanced audio (Opus codec).
* Users will not be able to join from mobile apps.
* Make Offline (mp4) recordings will not be possible.

☐ Force classic view (The option to use classic view will be removed soon)

Use this option If some of the users are on 32-bit systems and need to share their desktop screen. Note: This will force all attendees to join from Flash client in browser or from the classic desktop application.

☐ Let the hosts decide for their room

Custom Pod Settings

☒ Enable Custom Pods

Save Cancel

Default

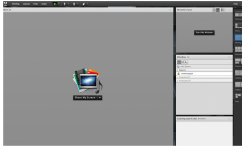
Will my old Flash content continue to work in my Adobe Connect rooms ?

If you are on Adobe Connect version 11.2 or higher you may continue using flash content in rooms set to Classic View using a native desktop application. This support will end soon.

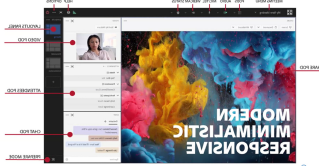
Flash content compatibility matrix				
Content Type	Flash browser client	Desktop App in Classic View (Flash)	HTML browser client	Desktop App in Standard View (HTML)
Flash content in meetings	X	✓	X	X
Flash content in On-demand trainings	X	✓	X	X
Flash content in old recordings	X	✓	X	X
		This support ends soon		

How can you be ready?

Classic View

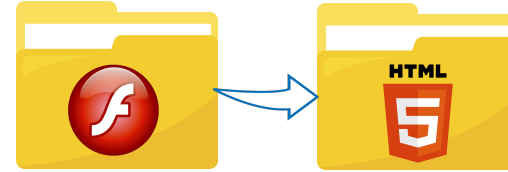


Standard View



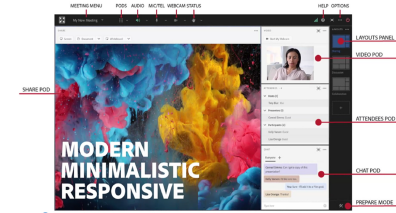
Important considerations while choosing your interface setting

[Watch video](#)



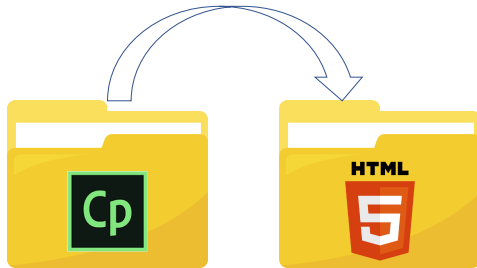
How to create your Flash to HTML content migration plan

[Watch video](#)



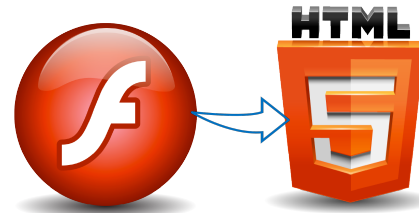
Learn more about Standard View

[Watch Playlist](#)



Publishing files To HTML5 using Adobe Captivate

[Read Blog](#)



Migrating Legacy Flash eLearning content to HTML5

[Read Blog](#)



Upcoming changes with Adobe Connect 11.2 - What users need to know

[Read Blog](#)

More Useful Resources

Ask any questions

1

[Discussion forum](#)

Hardware & Network Compatibility

2

Adobe Connect
[Technical Specifications](#)
and [System Requirements](#) page

When will your account be upgraded?

3

Adobe Connect account URL
in [Upgrade Timetable tool](#)
to determine time of
upgrade to C11.2.

Download latest Apps

4

Adobe Connect
[Downloads and Updates](#) page

Latest Features

5

[What's new in C11.0](#)
[What's new in C11.2](#)

Everything you need to know
about

6

[Flash Free Adobe Connect](#)