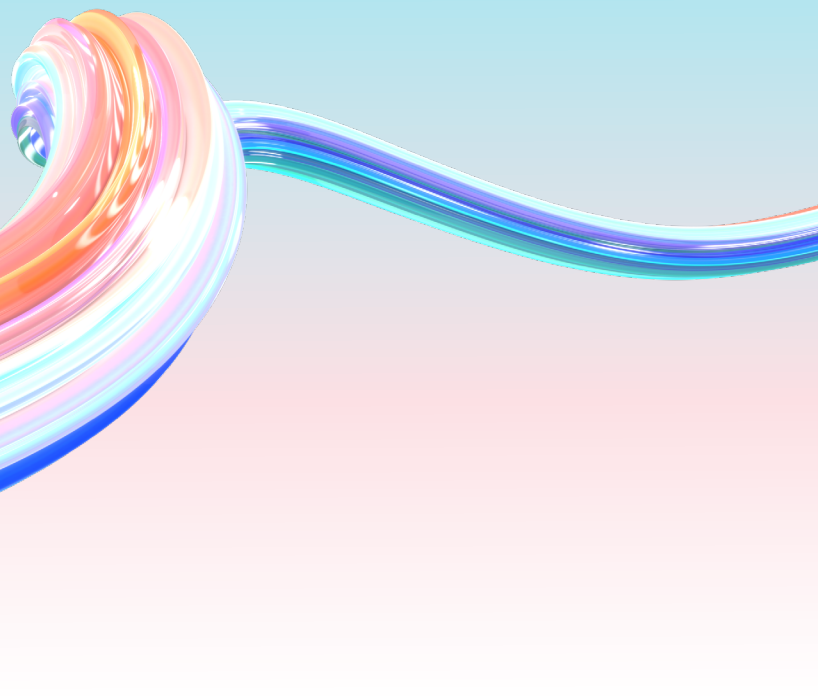




# Adobe ColdFusion (2023 Release)



## ColdFusion Enterprise (2023)

## ColdFusion Standard (2023)

### Cloud Services (AWS, Azure, GCP)

Cloud Storage Services	●	●
NoSQL Database Support	●	●
Messaging Service	●	●
Relational Database Services	●	●
AWS Lambda	●	●
Email Service	●	●

### Performance Monitoring Toolset

Automatic Connector Tuning	●	
Server Monitor	●	●
Database Monitor	●	●
External Services Monitor	●	
Code Profiler	●	



### API Manager

Threat Protection	●	
Policy Management	●	
Multitenancy Support	●	
API Monitoring	●	
API Version and Lifecycle Management	●	
API Access Control	●	
API Rate Limiting and Throttling	●	
API Developer Portal	●	
SOAP Gateway	●	
External Storage for Session Scope	●	
API Caching	●	
Enterprise API Management	●	
SOAP to REST Translation	●	

### Application Development

GraphQL Client	●	●
Lightweight Installer	Enhanced	Enhanced
Modularization	●	●
Single Sign-on	●	●
CF Setup	●	●
Asynchronous Programming	●	
Full CFSCRIPT Support	●	●
REPL Support	●	●
Compiled Application Deployment (Sourceless)	●	●



# Adobe ColdFusion (2023 Release)

	ColdFusion Enterprise (2023)	ColdFusion Standard (2023)
Code Profiler	●	
Distributed Cache	●	
Command Line Interface	●	●
Member Functions	●	●
Query Execute and Elvis Operator	●	●
Social Login Support & Social Plug-in Integration	●	●
Custom Serializer and De-serializer for JSON and XML	●	●
Multisite RESTful Web Services	●	
Object-Relational Mapping (ORM)	●	●
ORM Text Search	●	
Advanced Caching (ehcache)	●	●
Ajax UI Component	●	●
Ajax Framework	●	●
Image Manipulation	●	●
RSS and Atom Feed Creation & Consumption	●	●
ZIP and JAR Archive File Manipulation	●	●
Database Introspection	●	●
Custom Server-side Chart Styles	●	●
Server-side Charting and Graphing	●	●
ColdFusion Components (CFCs)	●	●
XML Support	●	●
XPath Support	●	●



# Adobe ColdFusion (2023 Release)

## ColdFusion Enterprise (2023)

## ColdFusion Standard (2023)

Web Services (SOAP)	Enhanced	●
Built-in Support for REST	●	●
File Manipulation	●	Restricted functionality
.NET Assembly Support (DLL)	●	●
Java, Servlet, and EJB Connectivity	●	●
JDBC and ODBC	●	●
FTP and SFTP Servers	●	●
Virtual File Systems (RAM)	●	●
Virtual File Systems (ZIP, JAR, FTP, SFTP)	●	●
Multi-threaded CFML (CFTHREAD) *	●	●
Database Client Connection Management	●	●
Support for Additional Database Types	●	●
Database Exception Handling	●	●
Failover Support for Database	●	●
Revamped Scheduler Engine	●	●
Grouping of Scheduled Tasks	●	●
Misfire and Exception Handling of Scheduled Tasks	●	
Scheduled Task Priority	●	●
Listeners for Scheduled Tasks	●	
Cluster Support For Scheduled Tasks	●	
Chaining of Scheduled Tasks	●	
Application-specific Scheduled Tasks	●	
Support for Closures	●	●



# Adobe ColdFusion (2023 Release)

## ColdFusion Enterprise (2023)

## ColdFusion Standard (2023)

CFC Auto Constructor	●	●
CFC Method Chaining	●	●
For-in Support for Queries and Lists	●	●
Hotfix Installer	●	●
Instant Notification for Updates in ColdFusion Administrator	●	●
CFScript Support	●	●
Flex and Adobe AIR Lazy Loading	●	

## Advanced Protocol Support

Gateway Architecture	●	Restricted functionality
Data Management Service	●	●
Data Services Messaging	●	●
Enterprise IM gateways (Sametime and XMPP)	●	Restricted functionality
Asynchronous CFML Gateway	●	Restricted functionality
SMS Gateway	●	Restricted functionality
JMS Gateway	●	Restricted functionality
TCP/IP Socket Gateway	●	Restricted functionality
Directory Watcher Gateway	●	Restricted functionality

## Document Services

PDF File Generation from HTML	●	Restricted functionality
PDF Digital Signatures	●	
PDF Archiving	●	●



# Adobe ColdFusion (2023 Release)

## ColdFusion Enterprise (2023)

## ColdFusion Standard (2023)

Full PDF DDX Support	●	
PDF Redaction	●	●
PDF Sanitization	●	●
Exchange Comments Across Files	●	●
Standardized PDF Metadata	●	●
PDF Attachments	●	●
PDF Stamp Support	●	●
Cluster Support for HTML to PDF Conversion	●	
Microsoft Office 2010 PowerPoint File Generation	●	Restricted functionality
PDF File Conversion from Microsoft Office 2010 Word & PowerPoint	●	Restricted functionality
MS Office 2010 Excel Support	●	Restricted functionality
PDF Form Processing	●	Restricted functionality
PDF Document Manipulation	●	Restricted functionality
Server-side Printing	●	Restricted functionality
Online Presentation Generation	●	Restricted functionality
Structured Reporting	●	Restricted functionality

## Enterprise Infrastructure

Central Configuration Server	●	●
64-bit Support	●	●
Administrative User and Role Management	●	
Request Limit Management	●	



## Adobe ColdFusion (2023 Release)

	ColdFusion Enterprise (2023)	ColdFusion Standard (2023)
Operating System Virtualization Support **	●	
High-scalability Email Engine	●	
Web-based Multi-instance Manager	●	
Web-based Cluster Manager	●	
JEE Package Deployment (EAR/WAR)	●	
Multiple Server Instances	●	
Instance Clustering	●	
Enterprise Database Drivers	●	
Port80 Support for HTML5 WebSockets	●	●
ColdFusion Archiving & Deployment (CAR)	●	●

### HTML5

Cluster Support for HTML5 WebSockets	●	●
Port80 Support for HTML5 WebSockets	●	●
SSLv3 Support for HTML WebSockets	●	●
HTML5 Charts	●	●
Built-in HTML5 Videoplayer	●	●
Fall Back from HTML5 to Adobe Flash Technology and Vice Versa	●	●
Skinning Support for HTML5 Videoplayer	●	●
Support for Events and JavaScript Interface for HTML5 Videoplayer	●	●
Geo-location Capability with CFMAP	●	●
Support for HTML5 Input Types	●	●



## Adobe ColdFusion (2023 Release)

### ColdFusion Enterprise (2023)

### ColdFusion Standard (2023)

Support for WebSocket Protocol on Server	●	●
Interface for Publish & Subscribe Using WebSocket	●	Restricted functionality
Custom Styles for HTML5 Charts	●	●

### Integrated Solutions

Cluster Support for HTML5 WebSockets	●	
Embedded Apache Solr full-text Search Engine	●	
Support for Dynamic Custom Fields for Solr	●	●
Data Import Handler for Solr	●	
Adobe LiveCycle Data Services ES Integration	●	●
Flash remoting	●	●
User-defined Functions	●	●
Microsoft SharePoint Web Parts	●	●
Microsoft SharePoint Single Sign-on	●	●
Java Portal Integration (JSR-168, JSR-286, WSRP)	●	●
Email Servers (POP and IMAP)	●	●
Support for Microsoft Exchange 2019	●	●





# Adobe ColdFusion (2023 Release)

## ColdFusion Enterprise (2023)

## ColdFusion Standard (2023)

Microsoft Exchange Server Integration	●	●
Directory Servers (Active Directory and LDAP)	●	●
Apache Tomcat Integration	●	●
Revamped Adobe Flash Videoplayer	●	●
Bidirectional Java Integration	●	●
Java Classes Loaded from Custom Paths	●	●
Java Dynamic Proxies from CFCs	●	●
Ability to Invoke CFCs from Java Classes	●	●
Integration with VS Code	●	●

## Security

LDAP and SAML Integration	●	●
JWT Integration in CF	●	●
Single Sign-on	●	●
Auto Lockdown	●	●
Windows NT Domain Authentication	●	●
RSA FIPS 140-compliant Strong Cryptology	●	
Security Sandboxing	●	●
Built-in Functions to Protect against XSS and CSRF	●	●
Login Mechanism	●	●



## Adobe ColdFusion (2023 Release)

### ColdFusion Enterprise (2023)

### ColdFusion Standard (2023)

Security Code Analyzer	●	●
Session Cookie Management	●	●

### Server Manager and Monitor

Web-based Server Administration	●	●
Administrator API	●	●
Server Monitoring API	●	●