

ColdFusion Enterprise
(2025 Release)

ColdFusion Enterprise
(2023 Release)

ColdFusion Enterprise
(2021 Release)

Cloud Services

Cloud Storage Services	AWS, Azure, GCP	AWS, Azure, GCP	AWS, Azure
NoSQL Database Support	AWS, Azure, GCP	AWS, Azure, GCP	AWS, Azure
Messaging Service	AWS, Azure, GCP	AWS, Azure, GCP	AWS, Azure
Relational Database Services	AWS, Azure, GCP	AWS, Azure, GCP	AWS, Azure
AWS Lambda	AWS	AWS	AWS
Email Service	AWS	AWS	AWS

Performance Monitoring Toolset

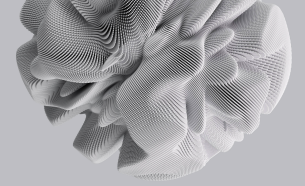
Automatic Connector Tuning	●	●	●
Server Monitor	●	●	●
Database Monitor	●	●	●
External Services Monitor	●	●	●

API Manager

Threat Protection	●	●	●
Policy Management	●	●	●



Adobe ColdFusion (2025 Release)



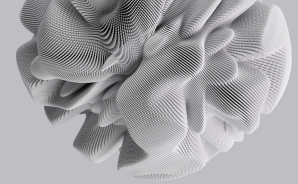
	ColdFusion Enterprise (2025 Release)	ColdFusion Enterprise (2023 Release)	ColdFusion Enterprise (2021 Release)
Multitenancy Support	●	●	●
API Monitoring	●	●	●
API Version and Lifecycle Management	●	●	●
API Access Control	●	●	●
API Rate Limiting and Throttling	●	●	●
API Developer Portal	●	●	●
SOAP Gateway	●	●	●
External Storage for Session Scope	●	●	●
API Caching	●	●	●
Enterprise API Management	●	●	●
SOAP to REST Translation	●	●	●

Application Development

MS Graph API (User Management)	●		
Spreadsheet	Enhanced	●	●
GraphQL Client	●	●	



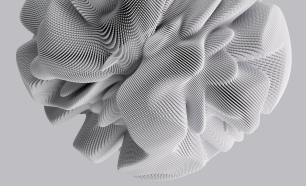
Adobe ColdFusion (2025 Release)



	ColdFusion Enterprise (2025 Release)	ColdFusion Enterprise (2023 Release)	ColdFusion Enterprise (2021 Release)
Lightweight Installer	●	●	●
Modularization	●	●	●
Single Sign-on	●	●	●
CF Setup	●	●	●
Asynchronous Programming	●	●	●
Full CFSCRIPT Support	●	●	●
REPL Support	●	●	●
REST Playground	●	●	●
Code Profiler	●	●	●
Distributed Cache	●	●	●
Command Line Interface	●	●	●
Member Functions	●	●	●
QueryExecute and Elvis Operator	●	●	●
Social Login Support and Social Plug-in Integration	Enhanced	●	●
Custom Serializer and De-serializer for JSON and XML	●	●	●
CFScript Support		●	●



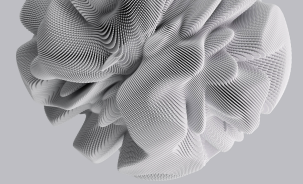
Adobe ColdFusion (2025 Release)



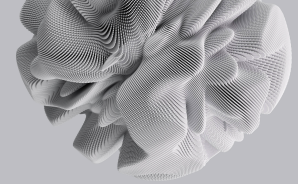
	ColdFusion Enterprise (2025 Release)	ColdFusion Enterprise (2023 Release)	ColdFusion Enterprise (2021 Release)
Multisite RESTful Web Services	●	●	●
Compiled Application Deployment (Sourceless)	●	●	●
Object-relational Mapping (ORM)	●	●	●
ORM Text Search	●	●	●
Advanced Caching (ehcache)	●	●	●
Ajax UI Component	●	●	●
Ajax Framework	●	●	●
Image Manipulation	●	●	●
RSS and Atom Feed Creation and Consumption	●	●	●
ZIP and JAR Archive File Manipulation	●	●	●
Database Introspection	●	●	●
Custom Server-Side Chart Styles	Enhanced	●	●
Server-side Charting and Graphing	Enhanced	●	●
ColdFusion Components (CFCs)	●	●	●
XML Support	●	●	●
XPath Support	●	●	●
Web Services (SOAP)	●	●	●



Adobe ColdFusion (2025 Release)



	ColdFusion Enterprise (2025 Release)	ColdFusion Enterprise (2023 Release)	ColdFusion Enterprise (2021 Release)
Built-in Support for REST	●	●	●
File Manipulation	●	●	●
.NET Assembly Support (DLL)	●	●	●
Java, Servlet, and EJB Connectivity	●	●	●
JDBC and ODBC	●	●	●
FTP and SFTP Servers	●	●	●
Virtual File Systems (RAM)	●	●	●
Virtual File Systems (ZIP, JAR, FTP, SFTP)	●	●	●
Multi-threaded CFML(CFTHREAD) *	●	●	●
Database Client Connection Management	●	●	●
Support for Additional Database Types	●	●	●
Database Exception Handling	●	●	●
Failover Support for Database	●	●	●
Revamped Scheduler Engine	●	●	●
Grouping of Scheduled Tasks	●	●	●
Misfire and Exception Handling of Scheduled Tasks	●	●	●
Scheduled Task Priority	●	●	●



ColdFusion Enterprise (2025 Release)

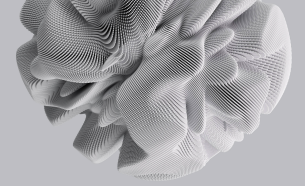
ColdFusion Enterprise (2023 Release)

ColdFusion Enterprise (2021 Release)

Listeners for Scheduled Tasks	●	●	●
Cluster Support for Scheduled Tasks	●	●	●
Chaining of Scheduled Tasks	●	●	●
Application-specific Scheduled Tasks	●	●	●
Support for Closures	●	●	●
CFC Auto Constructor	●	●	●
CFC Method Chaining	●	●	●
For-in Support for Queries and Lists	●	●	●
Hotx Installer	●	●	●
Instant Notification for Updates in ColdFusion Administrator	●	●	●

Advanced Protocol Support

Gateway Architecture	●	●	●
Data Management Service		●	●
Data Services Messaging		●	●
Enterprise IM Gateways (Sametime and XMPP)	●	●	●
Asynchronous CFML Gateway	●	●	●



ColdFusion Enterprise (2025 Release)

ColdFusion Enterprise (2023 Release)

ColdFusion Enterprise (2021 Release)

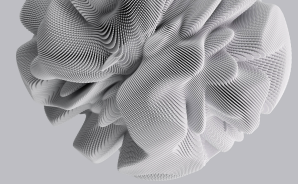
	ColdFusion Enterprise (2025 Release)	ColdFusion Enterprise (2023 Release)	ColdFusion Enterprise (2021 Release)
SMS Gateway	●	●	●
JMS Gateway	●	●	●
TCP/IP Socket Gateway	●	●	●
Directory Watcher Gateway	●	●	●

Document Services

PDF File Generation from HTML	●	●	●
PDF Digital Signatures	●	●	●
PDF Archiving	●	●	●
Full PDF DDX Support	●	●	●
PDF Redaction	●	●	●
PDF Sanitization	●	●	●
Exchange Comments Across Files	●	●	●
Standardized PDF Metadata	●	●	●
PDF Attachments	●	●	●
PDF Stamp Support	●	●	●
Cluster Support for HTML to PDF Conversion	●	●	●



Adobe ColdFusion (2025 Release)



ColdFusion Enterprise (2025 Release)

ColdFusion Enterprise (2023 Release)

ColdFusion Enterprise (2021 Release)

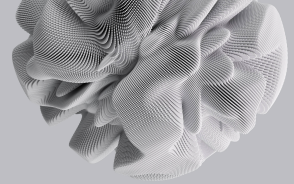
	ColdFusion Enterprise (2025 Release)	ColdFusion Enterprise (2023 Release)	ColdFusion Enterprise (2021 Release)
PDF File Conversion From Microsoft Office 2010 (Word and PowerPoint)	●	●	●
MS Office 2010 Excel Support	●	●	●
PDF Form Processing	●	●	●
PDF Document Manipulation	●	●	●
Server-side Printing	●	●	●
Online Presentation Generation	●	●	●
Structured Reporting	●	●	●

Enterprise Infrastructure

Central Configuration Server	●	●	
64-bit Support	●	●	●
Administrative User and Role Management	●	●	●
Request Limit Management	●	●	●
Operating System Virtualization Support **	●	●	●
High-scalability Email Engine	●	●	●
Web-based Multi-instance Manager	●	●	●



Adobe ColdFusion (2025 Release)



ColdFusion Enterprise
(2025 Release)

ColdFusion Enterprise
(2023 Release)

ColdFusion Enterprise
(2021 Release)

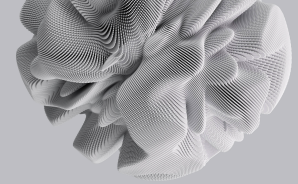
	ColdFusion Enterprise (2025 Release)	ColdFusion Enterprise (2023 Release)	ColdFusion Enterprise (2021 Release)
Web-based Cluster Manager	●	●	●
JEE Package Deployment (EAR/WAR)	●	●	●
Multiple Server Instances	●	●	●
Instance Clustering	●	●	●
Enterprise Database Drivers	●	●	●
ColdFusion Archiving and Deployment (CAR)	●	●	●

HTML5

	ColdFusion Enterprise (2025 Release)	ColdFusion Enterprise (2023 Release)	ColdFusion Enterprise (2021 Release)
Cluster support for HTML5 WebSockets	●	●	●
Port80 Support for HTML5 WebSockets	●	●	●
SSLv3 Support for HTML WebSockets	●	●	●
HTML5 Charts	Enhanced	●	●
Built-in HTML5 Videoplayer		●	●
Fall Back from HTML5 to Adobe Flash Technology and Vice Versa		●	●
Skinning Support for HTML5 Videoplayer		●	●
Support for Events and JavaScript	●	●	●



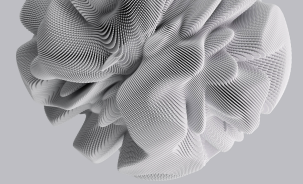
Adobe ColdFusion (2025 Release)



	ColdFusion Enterprise (2025 Release)	ColdFusion Enterprise (2023 Release)	ColdFusion Enterprise (2021 Release)
Interface for HTML5 Videoplayer	●	●	●
Geo-location Capability with CFMAP	●	●	●
Support for HTML5 Input Types	●	●	●
Support for WebSocket Protocol on Server	●	●	●
Interface for Publish and Subscribe Using WebSocket	●	●	●
Custom Styles for HTML5 Charts	Enhanced	●	●

Integrated Solutions

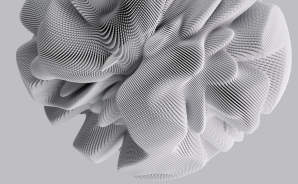
Support for Dynamic Custom fields for Solr	●	●	●
Embedded Apache Solr Full-text Search Engine	●	●	●
MS Graph API support for MS 365	●		
Data Import Handler for Solr	Enhanced	●	●
Flash Remoting		●	●
User-defined Functions	●	●	●
Microsoft SharePoint Web Parts	●	●	●
Microsoft SharePoint Single Sign-on	●	●	●



	ColdFusion Enterprise (2025 Release)	ColdFusion Enterprise (2023 Release)	ColdFusion Enterprise (2021 Release)
Email Servers (POP and IMAP)	●	●	●
Support for Microsoft Exchange 2019	●	●	
Microsoft Exchange Server Integration	●	●	●
Directory Servers (Active Directory and LDAP)	●	●	●
Java Portal Integration (JSR-168, JSR-286, WSRP)	●	●	●
Apache Tomcat Integration	●	●	●
Bidirectional Java Integration	●	●	●
Java Classes Loaded from Custom Paths	●	●	●
Java Dynamic Proxies from CFCs	●	●	●
Ability to Invoke CFCs From Java Classes	●	●	●
Integration with VS Code	●	●	

Security

JWT Integration in CF	●	●	
LDAP and SAML Integration	●	●	
Single Sign-on	●	●	●
Auto Lockdown	●	●	●



ColdFusion Enterprise (2025 Release)

ColdFusion Enterprise (2023 Release)

ColdFusion Enterprise (2021 Release)

Windows NT Domain Authentication	●	●	●
RSA FIPS 140-compliant Strong Cryptology	●	●	●
Security Sandboxing	●	●	●
Built-in Functions to Protect Against XSS and CSRF	●	●	●
Login Mechanism	●	●	●
Security Code Analyzer	●	●	●
Session Cookie Management	●	●	●

Server Manager and Monitor

Web-based Server Administration	●	●	●
Administrator API	●	●	●
Server Monitoring API		●	●