

## ColdFusion Enterprise (2025 Release)

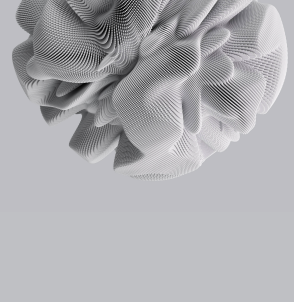
## ColdFusion Standard (2025 Release)

### Cloud Services (AWS, Azure, GCP)

|                              |   |   |
|------------------------------|---|---|
| Cloud Storage Services       | • | • |
| NoSQL Database Support       | • | • |
| Messaging Service            | • | • |
| Relational Database Services | • | • |
| AWS Lambda                   | • | • |
| Email Service                | • | • |

### Performance Monitoring Toolset

|                            |   |   |
|----------------------------|---|---|
| Automatic Connector Tuning | • |   |
| Server Monitor             | • | • |
| Database Monitor           | • | • |
| External Services Monitor  | • |   |
| Code Profiler              | • |   |

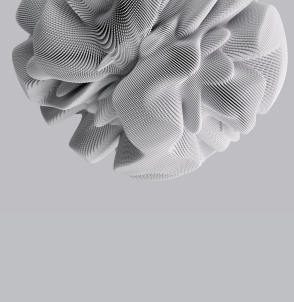


## ColdFusion Enterprise (2025 Release)

## ColdFusion Standard (2025 Release)

### API Manager

|                                      |   |  |
|--------------------------------------|---|--|
| Threat Protection                    | ● |  |
| Policy Management                    | ● |  |
| Multitenancy Support                 | ● |  |
| API Monitoring                       | ● |  |
| API Version and Lifecycle Management | ● |  |
| API Access Control                   | ● |  |
| API Rate Limiting and Throttling     | ● |  |
| API Developer Portal                 | ● |  |
| SOAP Gateway                         | ● |  |
| External Storage for Session Scope   | ● |  |
| API Caching                          | ● |  |
| Enterprise API Management            | ● |  |
| SOAP to REST Translation             | ● |  |



## ColdFusion Enterprise (2025 Release)

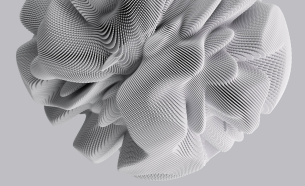
## ColdFusion Standard (2025 Release)

### Application Development

|  |          |          |
|--|----------|----------|
| GraphQL Client                                       | ●        | ●        |
| Lightweight Installer                                | Enhanced | Enhanced |
| Modularization                                       | ●        | ●        |
| Single Sign-on                                       | ●        | ●        |
| CF Setup   | ●        | ●        |
| Asynchronous Programming                             | ●        |          |
| Full CFSCRIPT Support                                | ●        | ●        |
| REPL Support   | ●        | ●        |
| Compiled Application Deployment (Sourceless)         | ●        | ●        |
| Code Profiler  | ●        |          |
| Distributed Cache                                    | ●        |          |
| Command Line Interface                               | ●        | ●        |
| Member Functions                                     | ●        | ●        |
| Query Execute and Elvis Operator                     | ●        | ●        |
| Social Login Support & Social Plug-in Integration    | ●        | ●        |
| Custom Serializer and De-serializer for JSON and XML | ●        | ●        |



# Adobe ColdFusion (2025 Release)



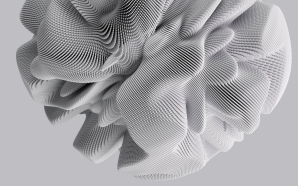
## ColdFusion Enterprise (2025 Release)

## ColdFusion Standard (2025 Release)

|  | ColdFusion Enterprise<br>(2025 Release) | ColdFusion Standard<br>(2025 Release) |
|--|---|---------------------------------------|
| Multisite RESTful Web Services           | ●                                       |                                       |
| Object-Relational Mapping (ORM)          | ●                                       | ●                                     |
| ORM Text Search                          | ●                                       |                                       |
| Advanced Caching (ehcache)               | ●                                       | ●                                     |
| Ajax UI Component                        | ●                                       | ●                                     |
| Ajax Framework                           | ●                                       | ●                                     |
| Image Manipulation                       | ●                                       | ●                                     |
| RSS and Atom Feed Creation & Consumption | ●                                       | ●                                     |
| ZIP and JAR Archive File Manipulation    | ●                                       | ●                                     |
| Database Introspection                   | ●                                       | ●                                     |
| Custom Server-side Chart Styles          | ●                                       | ●                                     |
| Server-side Charting and Graphing        | ●                                       | ●                                     |
| ColdFusion Components (CFCs)             | ●                                       | ●                                     |
| XML Support                              | ●                                       | ●                                     |
| XPath Support                            | ●                                       | ●                                     |
| Web Services (SOAP)                      | Enhanced                                | ●                                     |
| Built-in Support for REST                | ●                                       | ●                                     |



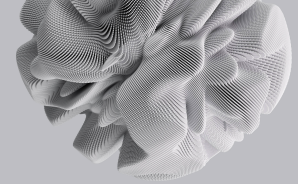
# Adobe ColdFusion (2025 Release)



## ColdFusion Enterprise (2025 Release)

## ColdFusion Standard (2025 Release)

|   | ColdFusion Enterprise<br>(2025 Release) | ColdFusion Standard<br>(2025 Release) |
|---|---|---------------------------------------|
| File Manipulation                                 | ●                                       | Restricted functionality              |
| .NET Assembly Support (DLL)                       | ●                                       | ●                                     |
| Java, Servlet, and EJB Connectivity               | ●                                       | ●                                     |
| JDBC and ODBC                                     | ●                                       | ●                                     |
| FTP and SFTP Servers                              | ●                                       | ●                                     |
| Virtual File Systems (RAM)                        | ●                                       | ●                                     |
| Virtual File Systems (ZIP, JAR, FTP, SFTP)        | ●                                       | ●                                     |
| Multi-threaded CFML (CFTHREAD) *                  | ●                                       | ●                                     |
| Database Client Connection Management             | ●                                       | ●                                     |
| Support for Additional Database Types             | ●                                       | ●                                     |
| Database Exception Handling                       | ●                                       | ●                                     |
| Failover Support for Database                     | ●                                       | ●                                     |
| Revamped Scheduler Engine                         | ●                                       | ●                                     |
| Grouping of Scheduled Tasks                       | ●                                       | ●                                     |
| Misfire and Exception Handling of Scheduled Tasks | ●                                       |                                       |
| Scheduled Task Priority                           | ●                                       | ●                                     |
| Listeners for Scheduled Tasks                     | ●                                       |                                       |



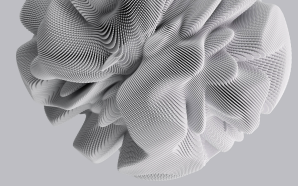
## ColdFusion Enterprise (2025 Release)

## ColdFusion Standard (2025 Release)

|  |   |   |
|--|---|---|
| Cluster Support For Scheduled Tasks                          | ● |   |
| Chaining of Scheduled Tasks                                  | ● |   |
| Application-specific Scheduled Tasks                         | ● |   |
| Support for Closures   | ● | ● |
| CFC Auto Constructor   | ● | ● |
| CFC Method Chaining  | ● | ● |
| For-in Support for Queries and Lists                         | ● | ● |
| Hotfix Installer   | ● | ● |
| Instant Notification for Updates in ColdFusion Administrator | ● | ● |

## Advanced Protocol Support

|  |   |                          |
|--|---|--------------------------|
| Gateway Architecture                       | ● | Restricted functionality |
| Enterprise IM gateways (Sametime and XMPP) | ● | Restricted functionality |
| Asynchronous CFML Gateway                  | ● | Restricted functionality |
| SMS Gateway                                | ● | Restricted functionality |
| JMS Gateway                                | ● | Restricted functionality |
| TCP/IP Socket Gateway                      | ● | Restricted functionality |
| Directory Watcher Gateway                  | ● | Restricted functionality |

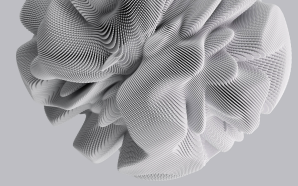


## ColdFusion Enterprise (2025 Release)

## ColdFusion Standard (2025 Release)

### Document Services

|  |   |                          |
|--|---|--------------------------|
| PDF File Generation from HTML              | ● | Restricted functionality |
| PDF Digital Signatures                     | ● |                          |
| PDF Archiving                              | ● | ●                        |
| Full PDF DDX Support                       | ● |                          |
| PDF Redaction                              | ● | ●                        |
| PDF Sanitization                           | ● | ●                        |
| Exchange Comments Across Files             | ● | ●                        |
| Standardized PDF Metadata                  | ● | ●                        |
| PDF Attachments                            | ● | ●                        |
| PDF Stamp Support                          | ● | ●                        |
| Cluster Support for HTML to PDF Conversion | ● |                          |
| PDF Form Processing                        | ● | Restricted functionality |
| PDF Document Manipulation                  | ● | Restricted functionality |
| Server-side Printing                       | ● | Restricted functionality |
| Online Presentation Generation             | ● | Restricted functionality |
| Structured Reporting                       | ● | Restricted functionality |
| MS Office Excel Support                    | ● | Restricted functionality |



## ColdFusion Enterprise (2025 Release)

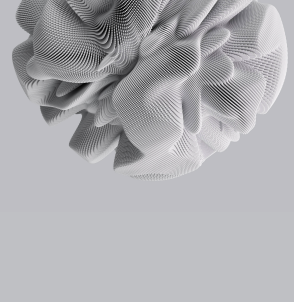
## ColdFusion Standard (2025 Release)

|   |   |                          |
|---|---|--------------------------|
| Microsoft Office PowerPoint File Generation                 | ● | Restricted functionality |
| PDF File Conversion from Microsoft Office Word & PowerPoint | ● | Restricted functionality |

## Enterprise Infrastructure

|  |   |   |
|--|---|---|
| Central Conguration Server                 | ● | ● |
| 64-bit Support                             | ● | ● |
| Administrative User and Role Management    | ● |   |
| Request Limit Management                   | ● |   |
| Operating System Virtualization Support ** | ● |   |
| High-scalability Email Engine              | ● |   |
| Web-based Multi-instance Manager           | ● |   |
| Web-based Cluster Manager                  | ● |   |
| JEE Package Deployment (EAR/WAR)           | ● |   |
| Multiple Server Instances                  | ● |   |
| Instance Clustering                        | ● |   |
| Enterprise Database Drivers                | ● |   |
| Port80 Support for HTML5 WebSockets        | ● | ● |
| ColdFusion Archiving & Deployment (CAR)    | ● | ● |





## ColdFusion Enterprise (2025 Release)

## ColdFusion Standard (2025 Release)

### HTML5

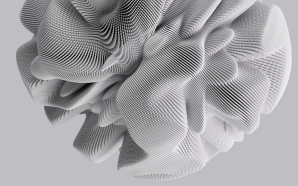
|   |   |                          |
|---|---|--------------------------|
| Cluster Support for HTML5 WebSockets                              | ● | ●                        |
| Port80 Support for HTML5 WebSockets                               | ● | ●                        |
| SSLv3 Support for HTML WebSockets                                 | ● | ●                        |
| HTML5 Charts  | ● | ●                        |
| Support for Events and JavaScript Interface for HTML5 Videoplayer | ● | ●                        |
| Geo-location Capability with CFMAP                                | ● | ●                        |
| Support for HTML5 Input Types                                     | ● | ●                        |
| Support for WebSocket Protocol on Server                          | ● | ●                        |
| Interface for Publish & Subscribe Using WebSocket                 | ● | Restricted functionality |
| Custom Styles for HTML5 Charts                                    | ● | ●                        |

### Integrated Solutions

|  |   |   |
|--|---|---|
| Cluster Support for HTML5 WebSockets         | ● |   |
| Embedded Apache Solr full-text Search Engine | ● |   |
| Support for Dynamic Custom Fields for Solr   | ● | ● |



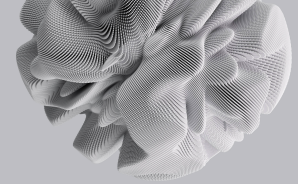
# Adobe ColdFusion (2025 Release)



## ColdFusion Enterprise (2025 Release)

## ColdFusion Standard (2025 Release)

|   | ColdFusion Enterprise<br>(2025 Release) | ColdFusion Standard<br>(2025 Release) |
|---|---|---------------------------------------|
| Data Import Handler for Solr                        | ●                                       |                                       |
| Adobe LiveCycle Data Services<br>ES Integration     | ●                                       | ●                                     |
| Flash remoting                                      | ●                                       | ●                                     |
| User-defined Functions                              | ●                                       | ●                                     |
| Microsoft SharePoint Web Parts                      | ●                                       | ●                                     |
| Microsoft SharePoint Single Sign-on                 | ●                                       | ●                                     |
| Java Portal Integration (JSR-168,<br>JSR-286, WSRP) | ●                                       | ●                                     |
| Email Servers (POP and IMAP)                        | ●                                       | ●                                     |
| Support for Microsoft Exchange 2019                 | ●                                       | ●                                     |
| Microsoft Exchange Server Integration               | ●                                       | ●                                     |
| Directory Servers<br>(Active Directory and LDAP)    | ●                                       | ●                                     |
| Apache Tomcat Integration                           | ●                                       | ●                                     |
| Bidirectional Java Integration                      | ●                                       | ●                                     |
| Java Classes Loaded from Custom Paths               | ●                                       | ●                                     |
| Java Dynamic Proxies from CFCs                      | ●                                       | ●                                     |
| Ability to Invoke CFCs from<br>Java Classes         | ●                                       | ●                                     |
| Integration with VS Code                            | ●                                       | ●                                     |



## ColdFusion Enterprise (2025 Release)

## ColdFusion Standard (2025 Release)

### Security

|  |   |   |
|--|---|---|
| LDAP and SAML Integration                          | • | • |
| JWT Integration in CF                              | • | • |
| Single Sign-on                                     | • | • |
| Auto Lockdown                                      | • | • |
| Windows NT Domain Authentication                   | • | • |
| RSA FIPS 140-compliant Strong Cryptology           | • |   |
| Security Sandboxing                                | • | • |
| Built-in Functions to Protect against XSS and CSRF | • | • |
| Login Mechanism                                    | • | • |
| Security Code Analyzer                             | • | • |
| Session Cookie Management                          | • | • |

### Server Manager and Monitor

|                                 |   |   |
|---------------------------------|---|---|
| Web-based Server Administration | • | • |
| Administrator API               | • | • |