



# Adobe® ColdFusion® 10 Enterprise Edition

Rapidly build Java™ EE-based web applications with less coding

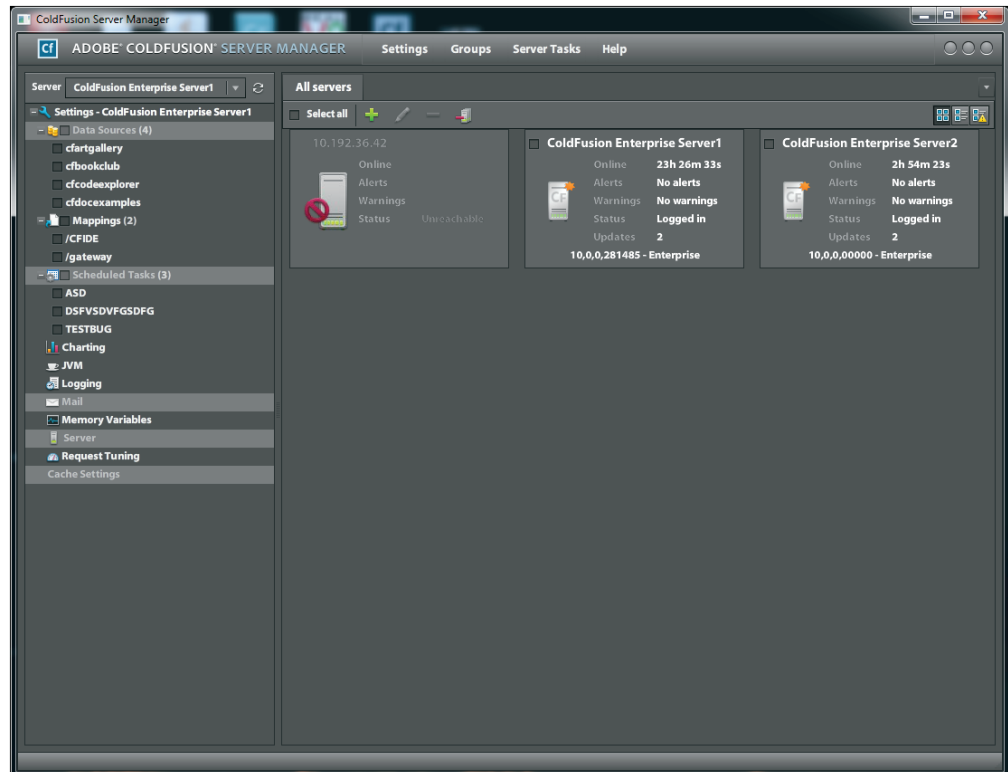


Adobe ColdFusion 10 Enterprise Edition application server is designed to rapidly build enterprise-ready Java EE applications. Easily create interactive web applications leveraging unique built-in HTML5 support. Make your websites more secure with formidable security standards.

**Build applications quickly**—Leverage seamless Java integration, language enhancements, and improvements to object relational mapping (ORM) to condense complex logic into fewer lines of code. Increase your productivity with new features like the revamped scheduler, Flex and Adobe AIR® lazy loading, and more.

**Embrace futuristic technologies**—Deliver first-in-class user experiences using unique built-in support for HTML5. Create more dynamic web applications with features like the video player, interactive charting, and web sockets. Leverage RESTful web services to easily build high-performing applications.

**Deploy enterprise-ready applications**—Benefit from improved application performance with Tomcat integration and enhanced caching. Leverage an array of built-in solutions to develop web applications more efficiently in enterprise environments. Make your websites more secure with formidable security standards.



## System requirements

### Windows\*

- Intel® Pentium® 4 or AMD Athlon® processor
- Microsoft® Windows Server® 2003 with Service Pack 1 or 2 or Windows Server 2003 R2 (Web, Standard, or Enterprise Edition); Windows Server 2008 (Web, Standard, or Enterprise Edition) with Service Pack 2 or Windows Server 2008 R2 (Web, Standard, or Enterprise Edition); Windows XP Professional or Home Edition; Windows Vista® (Business, Ultimate, or Enterprise) with Service Pack 2; or Windows 7 (Professional, Ultimate, or Enterprise) with Service Pack 1
- 512MB of RAM (1GB recommended)
- 500MB of available hard-disk space
- DVD-ROM drive

### Linux\*

- Intel Pentium 4 or AMD Athlon processor
- Red Hat® Enterprise Linux 5.6 or 6.1; SUSE® Linux Enterprise Server 10.3 or 11; openSUSE® 11.2, 11.3, or 11.4; Ubuntu 11.04, or 11.10; or Oracle Enterprise Linux 5.5
- 512MB of RAM (1GB recommended)
- 500MB of available hard-disk space
- DVD-ROM drive

### Mac OS

- Intel Pentium 4 processor
- Mac OS X v10.6.x, or v10.7
- 512MB of RAM (1GB recommended)
- 500MB of available hard-disk space
- DVD-ROM drive

### AIX® (RS/6000)

- POWER3 or POWER4 processor
- IBM® AIX 6.1
- 512MB of RAM (1GB recommended)
- 500MB of available hard-disk space
- DVD-ROM drive

### Solaris™

- SPARC™ processor
- Solaris 10
- 512MB of RAM (1GB recommended)
- 500MB of available hard-disk space
- DVD-ROM drive

## For more information

[www.adobe.com/products/coldfusion](http://www.adobe.com/products/coldfusion)

## Upgrade details

[www.adobe.com/products/coldfusion/upgrade](http://www.adobe.com/products/coldfusion/upgrade)



Adobe

Adobe Systems Incorporated  
345 Park Avenue  
San Jose, CA 95110-2704  
USA  
[www.adobe.com](http://www.adobe.com)

## Top reasons to buy Adobe ColdFusion 10 Enterprise Edition

**Working with PDF documents**—Work efficiently with PDF files and reduce the required code by directly adding images, watermarks, headers, and footers to your documents. Populate and extract data from PDF forms to collect data from application users and share information in a more secure environment.

**Security enhancements**—Make your server more secure against cross-site scripting and cross-site request forgery using functions to sanitize user input. Strengthen the authentication of applications using the enhanced login mechanism. Choose the new secure profile to enable default security settings across the server.

**Dynamic and interactive HTML5 charting**—Access a large repository of interactive, client-side HTML5 charts and easily implement them using the built-in CFCHART tag. Create an enriched user experience by customizing charts, including charts based on Adobe Flash® technology.

**Hotfix installer and notification**—Get instant notifications of updates to ColdFusion in your ColdFusion Administrator, and save time on installing updates using the one-click Hotfix installer.

**Improved web services support**—Publish and access web services with less code using the revamped engine that supports the WSDL 2.0 specification, SOAP 1.2, and document literal wrapped style.

**Improved and revamped scheduler**—Achieve better scheduled task management using application-specific tasks, event handling, grouping, and chaining. Manage tasks in a more granular, scalable, and organized manner by running tasks in a cluster setup.

**Object relational mapping enhancements**—Build and manage database-independent applications using object relational mapping (ORM) without writing any SQL. Index and perform a full-text search of ORM entities with the built-in Lucene search engine, and obtain improved debug information through SQL logging.

**Enhanced caching**—Boost performance by caching portions of pages with infrequently updated data, and improve custom handling of region-specific data by creating multiple cache regions on-the-fly. Improve server performance by sparing server resources through a parallel caching process.

**Support for HTML5 web sockets**—Publish data to multiple clients or execute a point-to-point data push with real-time server response. Leverage the support provided by the built-in functionality to instantly access HTML5 web sockets, even without prior knowledge of the protocol.

**Enterprise Infrastructure**—Achieve scalability by creating and managing multiple server instances in a clustered or virtualized environment. Easily deploy ColdFusion as an EAR or WAR from within your existing Java EE application servers. Send and receive large volumes of email using the built-in, highly scalable email engine.

**Tomcat integration**—Experience enhanced performance from the built-in Tomcat application server that replaces Adobe® JRun™. With active and vast support from the developer community, Tomcat implements most of the latest web standards.

Adobe, the Adobe logo, Adobe AIR, AIR, ColdFusion, Flash, and JRun are either registered trademarks or trademarks of Adobe Systems Incorporated in the United States and/or other countries. AMD and Athlon are trademarks or registered trademarks of Advanced Micro Devices, Inc. Mac OS is a trademark of Apple Inc., registered in the U.S. and other countries. Intel and Pentium are trademarks of Intel Corporation in the U.S. and other countries. AIX, IBM, POWER3, and POWER4 are trademarks of International Business Machines Corporation in the United States, other countries, or both. Linux is the registered trademark of Linus Torvalds in the U.S. and other countries. Microsoft, Windows, Windows Server, and Windows Vista are either registered trademarks or trademarks of Microsoft Corporation in the United States and/or other countries. openSUSE and SUSE are trademarks of Novell, Inc. in the United States and other countries. Red Hat is a trademark or registered trademark of Red Hat, Inc. in the United States and other countries. All SPARC trademarks are used under license and are trademarks or registered trademarks of SPARC International, Inc. Products bearing SPARC trademarks are based upon an architecture developed by Oracle Corporation. Java and Solaris are trademarks or registered trademarks of Oracle and/or its affiliates. All other trademarks are the property of their respective owners.

© 2012 Adobe Systems Incorporated. All rights reserved. Printed in the USA.

91066904 2/12