

Adobe Photoshop Elements 2.0

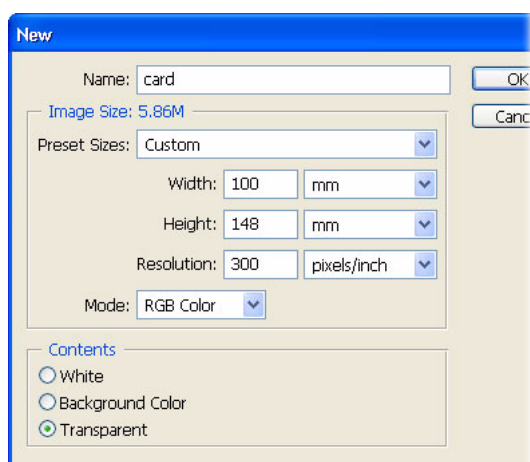
Create a greeting card

Say Happy New Year in your own special way! Using Photoshop Elements 2.0, you can make a unique greeting for your family, friends, and professional associates. This tutorial shows you how to create the background for your card, and how to add text and a photograph.



1. Create a new document.

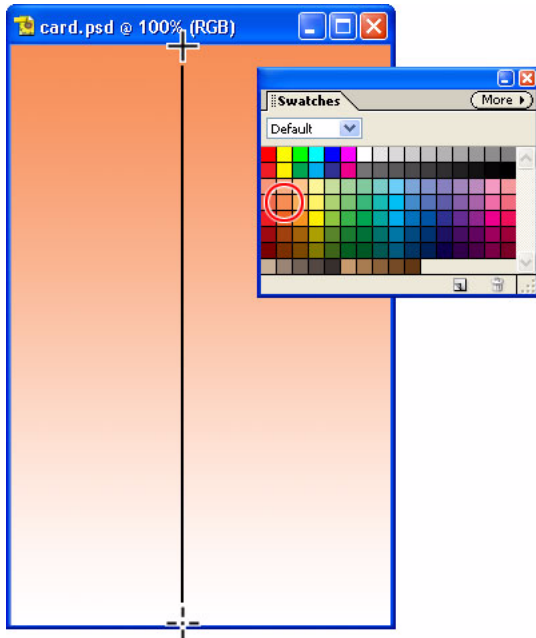
Choose File > New. In the New dialog box, create a new document that is an appropriate size for a card. We used the typical Japanese postcard size, 100 mm wide, 148 mm high, with a resolution of 300 pixels per inch. Enter a name and click OK.



2. Create the background.

Use the painting tools to create your background. We created our background by using the gradient tool and the paintbrush.

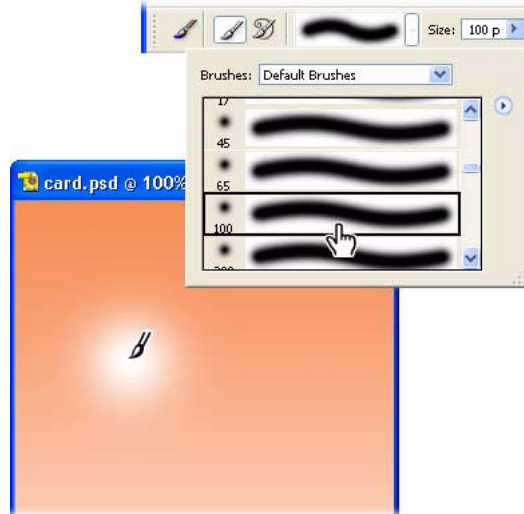
In the swatches palette, select a color for the foreground and white for the background. Drag down in your document with the gradient tool.



3. Create the fuzzy snowflakes.

In the Swatches palette, choose white for the foreground color. Choose Layer > New > Layer, change the layer opacity to 50%, and click OK.

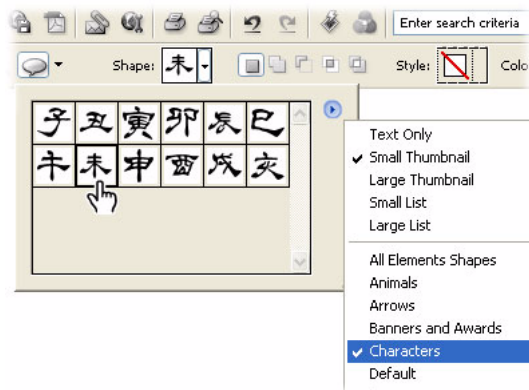
Select the brush tool. In the brush picker in the option bar, choose a soft edge brush between 100 to 300 pixels. Click everywhere you want snow flakes to appear.



4. Add a custom shape

Select the custom shape tool in the toolbar. In the options bar, open the shape picker and then choose a character. We choose the sheep character (character 8).

Draw the shape in your document. Select Shape 1 in the Layers palette and adjust the opacity for the effect you want.



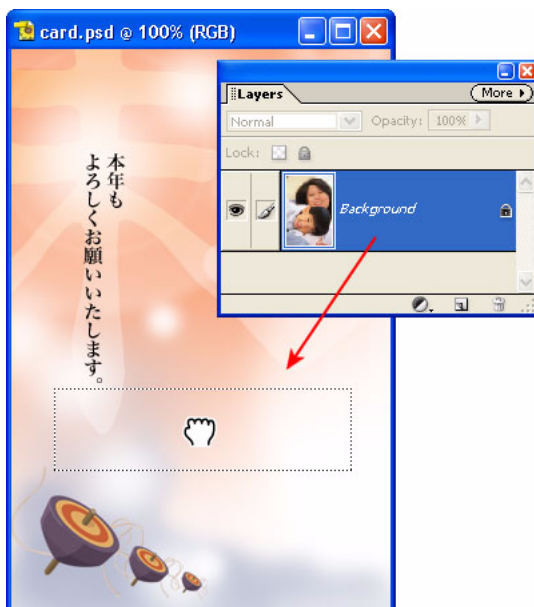
5. Add your greeting text

Select a new foreground color then select the vertical or horizontal type tool and type your text. In the options bar, set the weight and size of your text.



6. Add a photo

Open the Photo you want to use then drag it from the layers palette to your card. Choose Image > Transform > Free Transform and then resize or rotate the image as necessary. Use the move tool to move the photo to the correct location in your card.



7. Soften the edges of the photo.

Select the eraser tool and choose a soft-edge brush from the brush picker in the option bar. Drag it around the image to soften the edges and help the image blend in with the background.



8. Save your greeting card

You can save your card to print it, or to email it or post it to your Web site.

To save for print, choose File > Save and print according to your printer instructions. If you want a different format, choose File > Save As.

To send as an email attachment, choose File > Attach to E-Mail. In the Attach to E-Mail dialog box, click Auto Convert. Photoshop Elements converts your card to JPEG format and launches your default email program, with your card already attached.

To save for the Web, choose File > Save for Web. In the Save for Web dialog box, make the adjustments you want and click OK.