

# Adobe® Designer 6.0

## The Premier Development Tool for Creating Intelligent Documents

### Graphical XML form design tool streamlines the development of intelligent electronic forms to automate form generation, data capture, and processing

For organizations that want to automate form data capture and processing of forms, Adobe® Designer 6.0 offers an outstanding solution to create forms that combine high-fidelity presentation with XML-data handling. Using Adobe Designer 6.0, form authors can quickly create intelligent electronic forms that can be rendered as Adobe PDF or HTML. Adobe Designer 6.0 is an essential part of the suite of Adobe Document Services, which helps to automate and accelerate the flow of information by cost-effectively connecting people and processes with core business systems.

#### Quickly Create Powerful, Intelligent Forms

Adobe Designer 6.0 offers unparalleled control over form design and presentation. A unified design environment lets form authors easily lay out templates, incorporate business logic, and preview forms in real time. Authors use an intuitive grid layout and drag-and-drop libraries to position graphics, enter text, and add form objects such as list boxes, drop-down lists, command buttons, and check boxes. They can then render a single template into multiple formats to suit audience preference, type of data to be captured, or the platform being used.

With JavaScript™ support and a simplified calculation language, authors can create interactive forms that help to reduce errors and speed processing. Built-in support to submit forms to back-end systems and drag-and-drop tools to integrate with Web services make it easy to design sophisticated forms that can validate data, perform calculations, present selection lists, and automatically check for errors.

#### Easily Integrate Forms with Back-End Systems

Adobe Designer 6.0 provides full support for W3C-standard XML schemas so that electronic forms can be integrated with existing applications and systems. Forms created in Adobe Designer 6.0 use XML schemas or samples to dictate how data comes in and out of a form. Thanks to the drag-and-drop interface, authors do not need programming knowledge to include data binding on a form because they simply create links between existing XML schemas and form fields. With this easy method for passing data via standardized XML, organizations can streamline form data processing without the high IT costs typically associated with the development of XML-based forms.

#### Simplify Customization with Dynamic Form Generation

Adobe PDF or HTML forms created in Adobe Designer 6.0 can dynamically adjust to data and events while in use. A data-driven form grows or shrinks according to the amount of data merged into it. A single template, for example, can be used to generate invoices for 3, 30, or 3,000 items. Event-driven templates adjust in response to data entered on a form. With dynamic forms, customization is cost-efficient because organizations do not have to create and maintain multiple templates to provide individually customized interactive forms.

Adobe Designer 6.0 creates templates for use with the following products for solutions ranging from simple print-and-fill forms to complete online form management and processing.

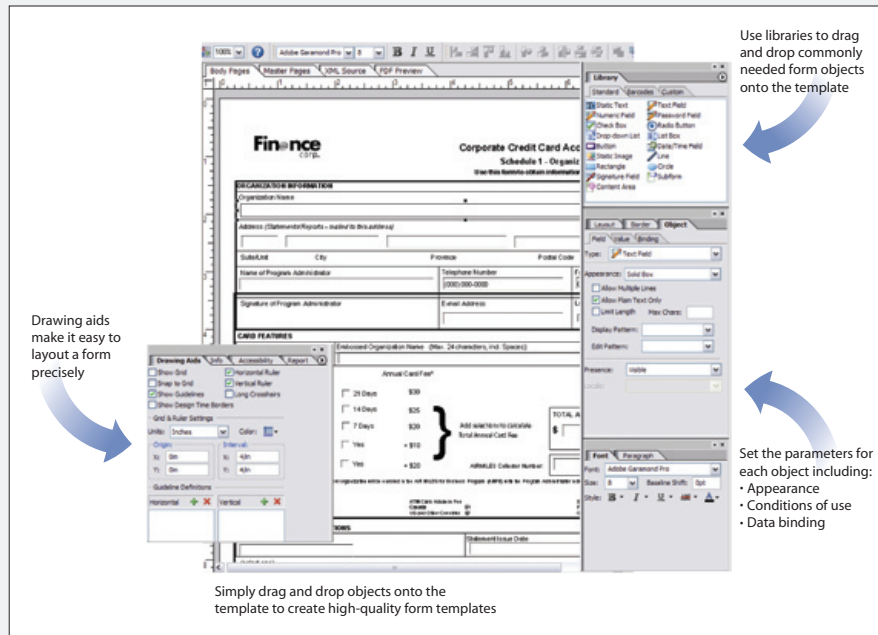
- Adobe Acrobat® family
- Adobe Form Manager
- Adobe® Form Server
- Adobe Reader®
- Adobe Reader Extensions Server

**Adobe Designer 6.0 can be used to create forms in:**

Czech	Danish
English	Finnish
French	German
Hungarian	Italian
Japanese	Korean
Norwegian	Polish
Portuguese	Russian
Simplified Chinese	Spanish
Swedish	Traditional Chinese

**SYSTEM REQUIREMENTS**

- Intel® Pentium® III - 450Mhz or equivalent processor
- 256 MB RAM
- Screen Resolution: 1024 X 768
- 150 MB of hard disk space



**Additional Features**

**Advanced security options**

Authors can easily incorporate appropriate levels of security into a form. Forms created in Adobe Designer 6.0 can include digital signatures from leading security vendors and can be encrypted and password protected to prevent unauthorized access or modification.

**Universal access**

Adobe Designer 6.0 forms can be used with a Web browser, Adobe Acrobat, or Adobe Reader. With over 500 million copies deployed worldwide, the free, cross-platform Adobe Reader provides a low-cost solution for users inside or outside the firewall to view and complete forms. In addition, form authors can design forms for impaired users. These forms can have navigation features that include automated and customized tabbing orders, as well as specialized help text that is activated only when a screen reader is present.

**Import support for multiple file types**

Organizations can protect and leverage current investments in forms by importing existing forms and templates from a variety of source applications, such as Adobe Acrobat, Adobe Output Designer, Microsoft® InfoPath, and Microsoft Word. Imported files are converted into XML so the author can modify any part of an imported form in Adobe Designer 6.0.

**Adobe Systems Incorporated**  
 345 Park Avenue, San Jose, CA 95110-2704 USA  
[www.adobe.com](http://www.adobe.com)

Adobe, the Adobe logo, Acrobat, and Reader are either registered trademarks or trademarks of Adobe Systems Incorporated in the United States and/or other countries. Intel and Pentium are trademarks or registered trademarks of Intel Corporation or its subsidiaries in the United States and other countries. Microsoft and Windows are either registered trademarks or trademarks of Microsoft Corporation in the United States and/or other countries. All other trademarks are the property of their respective owners.

© 2004 Adobe Systems Incorporated. All rights reserved. Printed in the USA.  
 95003433 5/04

